

Santa Clara Valley Gem and Mineral Society

Send Exchange Bulletins to:
June Harris
107 Dell Way
Scotts Valley, CA 95066



Please Deliver Promptly

BRECCIA

Santa Clara Valley
Gem and Mineral Society



All American Club

Volume 55
Number 2

San Jose, CA
February, 2008

SCVGMS ELECTED OFFICERS

President: Randy Harris
(831) 438-5150
Vice President: Rick Kennedy
(408) 529-9690
Secretary: John Eichhorn
(408) 749-0523
Treasurer: Frank Mullaney
(408) 266-1791
Editor: June Harris
(831) 438-5150
Federation Director: Ruth Bailey
(408) 248-6195
Alternate Fed. Director: Frank Monez
(408) 578-7067
Directors:
Chris Cherry (408) 448-0635
Marc Mullaney (408) 691-1584
RK Owen (408) 377-5373
Michael Paone (408) 340-3258
Matt Wood (408) 744-9402
Historian: Linda Spencer (408) 997-7319
Parliamentarian: Dean Welder
(408) 353-2675

SCVGMS COMMITTEE HEADS

Donation Receiving Committee Chairman:
George Yamashita
Field Trip Committee Coordinator:
Dean Welder
Field Trip Committee: Randy Harris,
John Eichhorn, & Marc Mullaney
Financial Advisory Committee:
Ruth Bailey & Chuck Boblenz
Founder's Day Picnic Food:
Nancy Reineking & Michael Paone
Founder's Day Raffle: Claire Ferguson
Founder's Day Bingo: John Eichhorn
Hospitality: Chris Cherry
Installation Dinner: Marc Mullaney
Librarian: Marsha Owen
Member Displays: Rick Kennedy
PLAC: (Public Lands Advisory Committee)
Frank Monez
Program: OPEN
Refreshments: Linda Spencer
Secret Auction: Donation Receiving Comm.
Sergeant-at-arms: Vito Cangemi & JT Fuller
Show 2008: Marc Mullaney
Show 2009: Frank Mullaney
Silent Auction: John and Sylvia Palmieri
Social: June Harris
Sunshine: Ernestine Smith
Trailer Custodian: Herb Vogel
Trophies: Frank Mullaney
Webmaster: RK Owen

Santa Clara Valley Gem and Mineral Society

P.O. Box 54, San Jose, CA 95103-0054

Website: www.scvgms.org

Email: info@scvgms.org

Phone Number (408) 265-1422

An Invitation

This society is pleased to invite guests to attend general meetings, study groups, and field trips. General meetings are normally held the fourth Tuesday of every month at 7:45 PM at 100 Belwood Gateway (the Cabana Club), Los Gatos, CA 95032. Belwood Gateway is just south of Blossom Hill Road between Leigh Avenue and Harwood Road.

Our next general meeting will be on February 26, 2008 at the Cabana Club, 100 Belwood Gateway, Los Gatos, CA 95032 at 7:45 PM.

Our next board meeting will be on February 28, 2008 at Randy Harris' home, 107 Dell Way, Scotts Valley, 95066, at 7:30 PM.

Our Society's Purpose: The inculcation of a love of rocks and minerals by the furtherance of members' interests in the earth sciences and by education in all facets of related educational activities with the promotion of good fellowship, proper ethics, and conduct.

Our Membership Requirements: Attendance at two general meetings within twelve months. This society is a member of the California Federation of Mineralogical Societies (CFMS) and is affiliated with the American Federation of Mineralogical Societies (AFMS). Dues are \$10.00 per year.

Our Newsletter, the Breccia, is published ten times annually. The deadline for most articles is the Sunday before the regular meeting. The Breccia Editor is June Harris who may be contacted by email at juneconeyharris@yahoo.com or by phone at (831) 438-5150. The Breccia is proofread by Linda Spencer. Ruth Bailey handles all aspects of mailing. Exchange bulletins may be sent to June Harris at the following address: 107 Dell Way, Scotts Valley, CA 95066. Permission to copy is freely granted to American Federation of Mineralogical Societies (AFMS) affiliated clubs when proper credit is given.

Study Group Leaders

For information on a study group, please call the leader(s) listed below

Cutaways & Carvers	Frank Mullaney	(408) 266-1791
Facet Cutters	Max Casey	(408) 227-0526
Fossileers	Gail Matthews	(650) 962-9960
Jewelers	Marc Mullaney	(408) 691-1584
Mineraleers	Chuck Boblenz	(408) 734-2473
Smithies	Kelly Van Vleck & Pat Speece	(408) 262-8187
	Pat Speece	(408) 266-4327
Stringers	Pat Speece	(408) 266-4327

Randy's Ramblings

Hello Fellow Rockhounds,

I would like to encourage each of you to take advantage of some of our upcoming activities. There is a Potluck Dinner before the next regular meeting (at 6:30 PM), a field trip to Morgan Hill for Poppy Jasper, and several other events which are listed in here in the Breccia. Come and say hello to our scholarship recipients at the next meeting.

The Show is coming up very soon. There is still much to do. Please contact Marc Mullaney and let him know what you can do to help.

And now, it's time to get up on my soapbox. I have a few committee positions that are available, including Program Chairman. There are some people doing more than one job. This can lead to "burnout" which can be the death of a club. Remember, "Many hands make light work". Some of the committees that have a Chairperson need help, also. Please give me a call if you are willing to lend a hand. My phone number and E-mail address are listed here in the Breccia. Thanks to Rita Trahan for stepping up to help Linda Spencer with refreshments.

Please let me know if there is anything you are interested in that we are not already doing. I will take it to the board and see what it takes to make it happen. This is your club. It will be more fun if we do what you like to do!

Randy Harris, President

Scholarship Booth Work Day Planned

Date: February 23, 2008

Place: Cabana Club, 100 Belwood Gateway,
Los Gatos

Time: 9:30 AM - 2 PM

What are we working on: necklaces, key-chains, spiders, slugs, obsidian needles, fossilized shark's teeth.

Stop by and help for a couple of hours.

Next Demonstration Day

**February 23, 2008 at the
Cabana Club, 100 Belwood
Gateway, Los Gatos, from
10 AM-3 PM**

All study groups are requested to exhibit their craft. Members and guests are welcome and encouraged to attend. It's a great opportunity to get to know a study group leader or member.

Potluck at the February Meeting

Room setup at 5:45 PM

Potluck dinner at 6:30 PM

Meeting at 7:45 PM

Please bring an entrée, salad, or dessert to share, at least 10 servings please, and don't forget to bring a serving utensil, too. Table service and drinks will be provided.

This is a great opportunity to get to know some more club members.

Check out what our study groups are doing!!!

Mineraleers by Chuck Boblenz



The Mineraleers met on January 8th at the Boblenz' residence with nine members in attendance and talked about tourmaline. After a brief discussion about their crystallization and where they might be found, members passed around the specimens they had brought for others to enjoy. Each member was offered a specimen of black tourmaline from Thompson Peak add to their collection. The meeting was adjourned to the kitchen where Jeri had delicious refreshments and discussions continued.

The February meeting will be about jade and will be at Mike Paone's home on February 12th. The March meeting will be on rhodonite and will be at the Harris' home. Plan now to join us for these meetings and share some of your specimens with others. Hope to see you there.

Stringers by Pat Speece



The upcoming Stringers project is a chain necklace featuring a big focal point bead. We'll be using lots of jump rings. Stringers have been advised that I can help them make the rings if they provide the wire. It's fast and it's easy.

This class is full, but if there is demand, we can offer it again. If you are interested in the Stringers group, please contact me: email: sparkylarky@sbcglobal.net or phone (408) 266-4327. We make any type of jewelry using beads. Tools are furnished, as are a lot of supplies.

DRC report by Jane Yamashita

Our tables are full but need to be sorted before we have our next sale. We have the offer of another donation but have had trouble contacting the donors as the information came to someone other than the DRC chairman. As soon as we get more information, we will pick up the new donation. That should make the next sale interesting with some new rocks and minerals. Weather permitting, this will happen soon.

Jewelers by Marc Mullaney



The Jewelers study group will meet next on February 7th. Members will be working on soldering skills, easy to more difficult, for the first two months. For more information, contact Marc at geologistm@aol.com or (408) 691-1584. The meeting will be from 7 pm to 10 pm at the Cabana Club, 100 Belwood Gateway, Los Gatos.

Faceters



The Faceters study group will be meeting on February 2nd at the home of Max Casey, 9 AM - noon. The group is for anyone who would like to learn the art of faceting a gemstone. Novices are welcomed and encouraged. Contact Max Casey at (408) 227-0526 for more information and directions.



Smithies by Pat Speece

Smithies just had their pre-meeting and selected four projects. We are set to start on the first Tuesday in February. We supply all tools and can supply most materials. If anybody is interested in this 24-hour course, they should email Pat at sparkylarky@sbcglobal.net.

Cutaways and Carvers by Randy Harris



The Cutaways and Carvers study group will be meeting at Randy Harris' home on Saturday, February 9th at 1:00 PM. Call Randy Harris at (831) 438-5150 for more information about address and project suggestions and ideas.



Fossileers by Gail Matthews

No report submitted

Member Displays

by Rick Kennedy

This month's program was on opal, and there were some very nice examples of opal at the January general meeting. Matt Wood brought lovely samples from Opal Butte, Oregon, Australian Boulder Opal, Australian White Opal and Brazilian Crystal Opal. Steve Jobe and Rick Kennedy brought some very nice samples from Virgin Valley, Nevada, and Frank Monez had a large piece from Spencer, Idaho. Roger Akino was kind enough to bring several pieces from a huge rock and mineral collection, and Mike Blakely showed us samples he and Colleen Jackson collected last summer from the Hearst area in Northern California.

The following people are scheduled to bring something to share for the February general meeting: Donald Butler, Vito Cangemi, Maxie Casey, Chris Cherry, Adrienne Comanda, Don Cox, Betty Dean, Lynda DeiRossi, Sonia Dyer, and John Eichhorn. Can't decide what to bring? Our program will be on the material that can be collected in the Quartzsite area. Otherwise bring something that you have been working on, collected recently, or something about an area that you have recently visited or would like to visit.

February Meeting Program

Field Trips to the Quartzsite and Tucson area.

Bring any specimens from that area that you might have to share.

Meet Our New Members

Approved at the January 2008 Board Meeting

Bob Kozak, 721 Shell Blvd. 206C, Foster City, 94404, (650) 357-8108, topaz00805@comcast.net. Bob is interested in cutting and polishing, collecting, silversmithing, fossils, faceting, carving, minerals, and field trips.

Bill Spence, 2381 Homewood Dr., San Jose, 95128, (408) 398-7502, bill.spence777@sbcglobal.net. Bill is interested in cutting and polishing, collecting, faceting, carving, geology, minerals, and field trips.

Sunshine by Ernestine Smith



Sylvia Palmieri was in the hospital December 21 to 28 because she fractured her tail bone. This is extremely painful, and she will continue to have pain for months, but she is doing better.

If you have information concerning any member who is ill, hospitalized, or has had a death in the family, please contact our sunshine person, Ernestine Smith, (408) 395-5035.

8th Annual Petrified Wood ID Seminar

via CFMS Newsletter, January, 2008

The Fossils for Fun Society, in cooperation with Sierra College, will present the 8th Annual Petrified Wood Identification Seminar, featuring Walt Wright, Paleobotanist, as lecturer.

Mark your calendars for March 14th through 19th, 2008, for this extremely popular seminar which will be held at Sierra College, Room 101, Sewell Hall, in Rocklin, CA.

This is your opportunity to learn about the complex and beautiful world of petrified wood. Become more knowledgeable about the woods in your own collection and about what and where to collect and buy. Learn about fossilization of wood; its age, origin, and occurrence; and how to identify kinds of petrified wood with simple tools.

Seminar Schedule:

Friday, March 14	6:00 PM - 9:00PM
Saturday, March 15	8:00 AM - 9:00 PM
Sunday, March 16	8:00 AM - 9:00 PM

On Monday, March 17th, Walt will lead an optional field trip which will be open to seminar attendees only.

For more information, contact: Debbie Bunn at (916) 929-6665 or Carole Lockhart at (916) 638-2314.

2009 CFMS Show Meeting

Date: February 7, 2008

Time: 6:00 PM

Where: Cabana Club, 100 Belwood Gateway, Los Gatos, CA 95032

Who: Anyone who is interested in helping with planning 2009 CFMS show.

Questions?? Call Frank, (408) 266-1791

SCVGMS 2008 Calendar



February 2 Faceters meeting at Max Casey's home at 9 AM

February 7 Jewelers meeting at the Cabana Club from 7-10 PM.

February 9 Cutaways meeting at Randy Harris' home at 1 PM

February 19 2008 Show meeting at Ruth Bailey's home at 7:30 PM

February 23 Demonstration Day at the Cabana Club from 9:30 AM-3:30 PM. All study groups are requested to demonstrate.

February 26 Potluck and General meeting at the Cabana Club. Potluck 6:30 PM, Meeting 7:45 PM. Club will provide drinks and paper goods, members provide main dish, salad, side dish, or dessert to share, at least 10 servings, please.

February 28 Board meeting at Randy Harris' home at 7:30 PM.

March 6 Jewelers meeting at the Cabana Club from 7-10 PM.

March 25 General meeting at the Cabana Club at 7:45 PM.

March 27 Board meeting at RK Owen's home at 7:30 PM.

April 2-3 Show setup at the Santa Clara County Fairgrounds. Everyone is requested to help.

April 4-6 Annual Show at the Santa Clara County Fairgrounds. Friday 9-5, Saturday & Sunday 10-5 Cleanup on Sunday evening until we are done. Everyone is requested to help.

April 22 General meeting and Dessert social at the Cabana Club from 7:00 PM. Club will provide drinks and paper goods. Everyone brings dessert to share.

April 24 Board meeting at 7:30 PM Location TBD.

May 1 Jewelers meeting at the Cabana Club from 7-10 PM.

May 17 Demonstration Day at the Cabana Club from 9:30 AM -3:30 PM. All study groups are requested to demonstrate.

May 27 General meeting at the Cabana Club at 7:45 PM.

May 29 Board meeting at Chris Cherry's home at 7:30 PM.

June 5 Jewelers meeting at the Cabana Club from 7-10 PM.

June 24 Barbeque/Potluck, General meeting and silent auction at the Cabana Club. Barbeque/potluck starts at 6:30 PM. Club will provide drinks, burgers, hotdogs, buns, condiments, and paper goods, members need to bring a salad or dessert to share, at least 10 servings, please. Meeting starts at 7:45 PM. Silent auction throughout the evening.

June 26 Board meeting at Matt Wood's home at 7:30 PM.

July 10 Jewelers meeting at the Cabana Club from 7-10 PM.

July 22 General meeting at the Cabana Club at 7:45 PM.

July 24 Board meeting at Frank Mullaney's home at 7:30 PM.

July 26 Founders Day Picnic at the Cabana Club.

August 7 Jewelers meeting at the Cabana Club from 7-10 PM.

August 9 Demonstration Day at the Cabana Club from 9:30 AM-3:30 PM. All study groups are requested to demonstrate.

August 26 Barbeque/Potluck and General meeting at the Cabana Club. Barbeque/potluck starts at 6:30 PM. Club will provide drinks, burgers, hotdogs, buns, condiments, and paper goods, members need to bring a salad or dessert to share, at least 10 servings, please. Meeting starts at 7:45 PM.

August 28 Board meeting at 7:30 PM Location TBD.

September 4 Jewelers meeting at the Cabana Club from 7-10 PM.

September 23 General meeting at the Cabana Club at 7:45 PM.

September 25 Board meeting at 7:30 PM location TBD

October 2 Jewelers meeting at the Cabana Club from 7-10 PM.

October 25 Demonstration Day at the Cabana Club from 9:30 AM-3:30 PM. All study groups are requested to demonstrate.

October 28 Potluck and General meeting at the Cabana Club. Potluck 6:30 PM, Meeting 7:45 PM Club will provide drinks and paper goods, members provide main dish, salad, side dish, or dessert to share, at least 10 servings, please.

October 30 Board meeting at Randy Harris' home at 7:30 PM.

November 6 Jewelers meeting at the Cabana Club from 7-10 PM.

November 25 General meeting at the Cabana Club at 7:45 PM. Elections and silent auction throughout the evening. Board meeting immediately following the meeting.

December 2 Installation Dinner at the Cabana Club at 7:00 PM. Please bring an unwrapped toy to donate to Toys for Tots.

December 4 Joint Board meeting at 7:30 PM Location TBD.

**2008 SCVGMS
Membership Directories
are available from John
Eichhorn at general
meetings. Pick yours up at
the February meeting.**

2008 Show Report

by June Harris

Show Chairman, Marc Mullaney, is looking for chairpersons for the following show jobs: Hospitality, Lucky Dip, and Door Prizes. All three jobs are fairly easy and a great beginning slot for anyone to work. Contact Marc if you would like to take a lead position at the show. Also Marc will have signup boards that will be passed around at the next two meetings. Please be generous with your time.

Advertising:

Advertising is coming along well. Anyone with a vehicle with a back window is asked to place a temporary adhesive sign on their rear or large side window to advertise the show while driving around the south bay area. Contact Frank Mullaney, (408) 266-1791 to arrange a time to have the sign placed on your window. Everyone is encouraged to have a sign placed on their vehicle.

Another area of advertising where we are placing great emphasis is on radio advertisements. We are currently developing our radio ads on KRTY. KRTY offers a special email service to their listeners. We will be able to reach 17,000 people through the e-mail list.

Yard signs will be available at the next meeting for people to display in their yards to advertise the show. If you have a yard sign that needs to be updated, please contact Julaine Mullaney for necessary supplies at (408) 266-1791.

John Eichhorn is coordinating the placement of street banners with the City of San Jose. Keep an eye out for the signs. Please let us know if the signs might be better placed in new locations.

Another area with which we need help is in the translation of our show press release and fliers into other languages. If you are fluent in another language or have a contact who is fluent, please contact Marc. This job needs to be completed soon.

Display Cases and Competition Items:

Bill Gissler is collecting applications for show display cases and all competition forms. The application is on page 15 of this newsletter. Please make sure you have your forms to Bill by March 7th. Everyone is encouraged to put in a display case in the show. If you enjoy competition or would like an evaluation of that prized piece you made this last year, make sure you send in the competition form to Bill. Ruth Bailey is coordinating an independent judge to evaluate each entry. The single items competition rules are included on page 14 of this month's newsletter.

Scholarship Booth:

Michael Paone, Nancy Reineking, and Chris Cherry will be at a workday at the next Demo Day on February 23rd from 9:30 - 2 at the Cabana Club. They are working with June Harris on assembling prizes and bracelet packages for the scholarship booth.

Everyone is encouraged to come help for a couple of hours. Also, we will continue to sell books, both hard cover and paperback, and rock and gem related magazines. Your donation of any books or magazines would be appreciated. Please bring them to the setup day at the show. We wish to thank all of our members who have donated rocks, craft and sewing supplies, and their hours of help in support of re-establishing the scholarship booth. Another area that we are trying to add to the scholarship booth is a treasure hunt. Kids would have to search the show for particular items and pieces of information. When their forms are complete, they would get a free spin on the wheel.

Demonstrators:

John Eichhorn is coordinating the signups of demonstrators for the show. If you are interested in demonstrating a lapidary art, please contact him at (408) 749-0523. He would like to have several demonstrators for each hour of the show. Please be generous with your skills and time.

Lucky Dip:

If you have a prize that you would like to donate, please give it to Marc. We currently have 11 items purchased at Tuscon. We need members to make or donate another 10 to 15 items.

New Area in the show:

A Senior Girl Scout, Jessica Kernan, of Troop 1234 in Scotts Valley, is working on her Gold Award project which is to teach mineral identification to children at the show. She is building mineral identification kits for teachers to help teachers to teach the basics of mineral identification to their classes in the future. Jessica is requesting help in two areas. She is looking for pieces of rhodonite to use in her area. This would be a donation, and pieces will not be returned. If you have a piece that you would like to donate, please give it to June Harris. The second area of help is that she could use a member or two per day to help work a station. She will have scripts for each test area for people to follow. It will be a very simple area to work.

Dealers and Layout:

We have a full contingent of dealers, and our preliminary layout is complete.

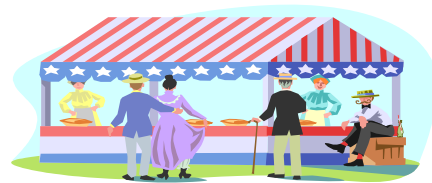
Setup:

Setup will be on April 2-3 from 9 AM to 5 PM on Wednesday and 9 AM - 9 PM on Thursday. Everyone who is available is requested to help with setup on both days. Wednesday is for covering all the booth tables with covers and assembling the display cases. Thursday is for setup of all the club booths and the dealers' arrival and their setup.

Next 2008 show meeting will be February 19, 2008 at 7:30 PM at Ruth Bailey's home.

CFMS Show Schedule

Changes to this calendar are printed in italics. For the latest version of the CFMS Show Schedule go to www.cfmsinc.org



February 15-24 2008, Indio, CA, San Gorgonio Mineral & Gem Society, Riverside County Fair & National Date Festival, Gem & Mineral Building Bldg #1, 46-350 Arabia Street, Hours: 10 am - 10 pm, Bert Grisham: (915) 849-1674, Email: bert67@verizon.net
February 22-23, 2008, Northridge, CA, Delair Rockhounds, United Methodist Church, 9650 Reseda Blvd. (at Superior St.), Hours: Fri. 3 p.m. - 9:30 p.m., Sat. 10 a.m. - 5 p.m., Julia Marin (818) 886-7190, Email: jomarin@disextreme.com
February 29 - March 1-2 2008, Hayward, CA, Mineral & Gem Society of Castro Valley, Centennial Hall., 22292 Foothill Blvd., Hours: Fri. and Sat. 10 - 6, Sun. 10-5, Larry Ham (510) 887-9007, Email: mdhavner@verizon.net, Website: www.MGSCV.org
February 29 - March 1-9 2008, Imperial, CA, Imperial Valley Gem & Mineral Society, Imperial Valley Fairgrounds, 2nd St. & Hwy 86, Hours: Mon-Fri 4-1, Sat-Sun 12-11, (760) 791-9192, Email: ivgmsociety@yahoo.com
March 1-2 2008, Arcadia, CA, Monrovia Rockhounds, Los Angeles County Arboretum & Botanical Garden, 301 N. Baldwin Ave., Hours: 9 - 4:30 both days, Jo Anna Ritchey, Email: j.ritchey@verizon.net, Website: www.moroks.com
March 1-2 2008, Ventura, CA, Ventura Gem & Mineral Society, Seaside Park - Ventura County Fairgrounds, 10 W. Harbor Blvd., Hours: Sat. 10-5, Sun. 10-4, Abe-Bar-Shai (818) 991-7735, Email: Barshai3@aol.com, Website: www.vgms.org
March 1-2 2008, Escondido, CA, Palomar Gem & Mineral Club, Army National Guard Armory, 304 Park Avenue, Escondido, CA, Hours: Saturday 9-5, Sunday 9-4, Michelle & Van Lynch (760) 949-4164, Email: michelleandvan@hotmail.com, Show Website: www.palomargem.org
March 8-9 2008, San Marino, CA, Pasadena Lapidary Society, San Marino Masonic Center, 3130 Hunting Drive, Hours: Saturday 10-6, Sunday 10-5, Drew Wilson (626) 449-4910, Email: TODREW@sbcglobal.net
March 8-9 2008, Salinas (Spreckles), CA, Salinas Valley Rock & Gem Club, Veteran's Memorial Hall, 5th and Llano Streets, Betty Alexander (831) 758-6205, Email: bettalex@earthlink.net
March 8-9 2008, Turlock, CA, Mother Lode Mineral Society, Stanislaus County Fairgrounds, Hours: Sat. 10 - 6, Sun 10-5, Bud & Terry McMillin (209) 524-3494, Email: terry.mcmillin@yahoo.com, Website: www.motherlodemineralociety.com
March 14-16 2008, San Bernardino, CA, Orange Belt Mineralogical Society, Western Regional League Ball Park, 6707 Little League Drive, Hours: Fri, Sat. 9 a.m. to dusk; Sun. 9 - 4, Emma Couveau (951) 288-6182
March 15-16 2008, Vallejo, CA, Vallejo Gem & Mineral Society, Solano County Fairgrounds, (junction Interstate 80 & Hwy 37) in the County Bldg., Hours: 10 - 5 both days, Ed Austin (707) 373-5639, Email: edhen@ips.net
March 22-23 2008, Angels Camp, CA, Calaveras Gem & Mineral Society, Calaveras "Frogtown" Fairgrounds, Hwy 49, Hours: Sat. 10 - 5, Sun. 10 - 4, Tom Reeves (209) 754-4863, \$3.00 per adult, children free
March 22-23 2008, Roseville, CA, Roseville Rock Rollers, Roseville (Placer) County Fairgrounds, 800 All America City Blvd., Hours: Sat. 10 - 5; Sun. 10 - 4, Jim Hutchings (530) 367-5108, Email: rockrollers@hotmail.com, Website: www.rockrollers.com
April 4, 5, & 6 2008, San Jose, CA, Santa Clara Valley Gem & Mineral Society, Santa Clara County Fairgrounds, 334 Tully Road, Hours: Fri. 9-5, Sat. & Sun. 10 - 5 both days, Email: info@scvgms.org, Website: www.scvgms.org
April 4, 5, & 6 2008, Bakersfield, CA, San Joaquin Valley Lapidary Society, 6th Annual Rock & Gem Rendezvous, Indoor Show/Outdoor Tail Gate, Kern County Fairgrounds, 1142 South P Street, Hours: Fri. 9 - 8; Sat. & Sun. 9 - 5, Lewis Helfrich (661) 872-8230 or 323-2663, Email: lewsrocks@bak.rr.com
April 12-13 2008, Mariposa, CA, Mariposa Gem & Mineral Club, Mariposa County Fairgrounds, Hours: 10 - 5 both days, Peggy Ronning (209) 742-

625, Email: mineralmuseum@sti.net
April 26-27 2008, Lancaster, CA, The Antelope Valley Gem & Mineral Society, Lancaster High School, 44701 32nd St. W., Hours: 9 - 5 both days, Jules Ficke (661) 943-5157, Email: av_gem@yahoo.com, Website: www.geocities.com.av_gem
April 26-27 2008, Santa Cruz, CA, Santa Cruz Mineral & Gem Society, Santa Cruz Civic Auditorium at Corner of Center & Church Streets, Hours: 10 - 5 both days, Eleanor & Hubert Drake (831-8086), Email: hmdrake@pacbell.net
May 3-4 2008, Bakersfield, CA, Kern County Mineral Society, Ming Ave and P Street, Kern County Fairgrounds, Hours: 10-5 both days, Ismael Sanchez (661) 301-4609,
May 10-11 2008, Reno, NV, Reno Gem & Mineral Society, Reno Live-stock Events Center, 1350 N. Wells Ave., Hours: Sat. 10 - 5; Sun. 10 - 4, John Peterson (775) 356-8820, Website: www.renorockclub.com
May 31 - June 1 2008, Glendora, CA, Glendora Gems, 859 E. Sierra Madre, Hours: Sat. 10 - 5; Sun. 10 - 4, Bonnie Bidwell (626) 963-4638, Email: YBidwell2@aol.com
May 31 - June 1 2008, Woodland Hills, CA, Rockatomics Gem & Mineral Society, Pierce College, Victory and Mason, Hours: 10 - 5 both days, Louise Gerik (818) 347-1234, Website: rockatomics.com
June 7-8 2008, La Habra, CA, North Orange County Gem & Mineral Society, La Habra Community Center, 101 W. La Habra Blvd., Hours: 9 - 5 both days, Don Warthen (626) 330-8974, Email: warthen@earthlink.net, Website: nocgms.com
June 27, 28, 29 2008, Ventura, CA, California Federation of Mineralogical Societies, Ventura County Fairgrounds, Hours: 10-5 Daily, Bural LaRue (909) 874-5664, Email: bplarue@earthlink.net
July 12-13 2008, Culver City, CA, Culver City Rock & Mineral Club, Culver City Veteran's Memorial Auditorium, 4117 Overland Avenue, Hours: Sat. 10 - 6; Sun. 10 - 5, Website: CulverCityRocks.org, Phone: (310) 391-8429, Email: maryellenandrick@aol.com
October 18-19 2008, Santa Rosa, CA, Santa Rosa Mineral & Gem Society, Veterans' Memorial Auditorium, 1351 Maple Avenue, Santa Rosa, Hours: Sat. 10-6, Sun. 10-5, Tom Dering (707) 564-4537, Email: farmarch@sonic.net, Website: www.gem-n-i.org
October 18-19 2008, Whittier, CA, Whittier Gem & Mineral Society, Whittier Community Center, 7630 Washington Avenue, Hours: Sat. 10-5 both days, Jay Valle: (626) 934-9764, Email: res19pnb@verizon.net

FEDERATION SHOWS IN 2008

California Federation (CFMS), June 27-29 2008, California Federation of Mineralogical Societies, Ventura County Fairgrounds, Ventura, CA, Hours: 10-5 Daily, Adults \$5.00, seniors (60+) \$4.00, students \$3.00, Kids under 12 free with paid adult, Fairgrounds parking

Eastern Federation (EFMS), February 23-24, Jackson, MS

Midwest Federation (MWF), June 20-22, Lincoln, NE

Northwest Federation (NFMS), June 20-26, Ontario, OR

Rocky Mountain Federation (RMFMS), October 31 - November 2, Tulsa, OK

South Central Federation (SCMS) / AFMS, September 25-28, Humble, TX

Upcoming Field Trip Opportunities

Contact Dean Welder (408) 353-2675 for information about the following field trips.

Dean will make the appropriate introductions for you to be able to attend.

January 27 - February 1, 2008 Wiley Wells (Blythe, CA) for geodes at the Hauser, Cinnamon, Straw, Hidden Saddle beds; and geodes at the Potato Patch; Botryoidal Psilomelane geodes, agate, and nodules at the Big Windy; and iron-wood at Old Woman Wash. Additional locations to be determined.

March 8 Morgan Hill, CA for Morgan Hill Poppy Jasper.

April 5 Lovelock, NV for petrified wood.

April 19 Stonyford, CA for solid orbicular jasper.

April 26 Pulga, CA (N of Oroville) for idocrase ("Pulga Jade").

May 2-4 Snyders Pow Wow at Valley Springs, CA.

May 3 Carson Hill, CA for minerals.

May 17-18 Fairview, NV for agate, geodes, wonderstone.

May 21-26 Tri-Federation Field Trip to Texas Springs for limb casts, agates, and petrified wood.

June 6 Virgin Valley, NV for opal.

June 7 Oregon for sunstones.

June 16-19 Virgin Valley, NV for opal.

Labor Day Weekend Cedarville, CA for petrified wood.

Scholarship Booth Wish List

If you have any of the following items that you would like to donate, please give them to June Harris at the next meeting on February 26th, or Demo Day on February 23rd. If we don't use the materials at this show, we will use them at the 2009 SCVGMS/CFMS show.

Craft glue

Epoxy

Beads of all sizes, colors, and shapes

Jewelry findings: bell caps, chains, clasps, jump rings

Small googly eyes

Paper bags

Plastic bags of any size

Ziploc bags of any size

Slabs of rocks

Small rocks for tumbling

Thundereggs and geodes, both cut and uncut

Apache tears

Obsidian needles

Whole crystals

Fossilized sharks teeth

Fossilized sand dollars and shells

Small pieces of petrified wood

New additions to the list:

Books

(both hard cover and paperback)

Rock and Gem related magazines

Kids Area Needs:

Large Igneous, Metamorphic, and Sedimentary rocks for the kids to touch. Contact June, (831) 438-5150, if you have any you would like to loan the Kids Area for the show. We must be able to identify them.

California Federation of Mineralogical Societies Fall Business Meeting

by Ruth Bailey, SCVGMS Federation Director

The annual Fall Business Meeting of the CFMS was held in Visalia on Nov. 10, 2007, and I attended as our representative. We had a quorum of directors present as well as all of the Federation officers and many of the chairpersons.

Reports were presented on the Federation shows for 2007, 2008, and 2010. The committee for the 2007 show reported that the show was successful and presented the check for the CFMS share to the Treasurer. Packets were available for the 2008 show which will be hosted by the Federation and will be at the Ventura County Fairgrounds on June 27-29. This fairgrounds is a very pleasant place, and we have had a number of Federation shows there in the past. I have the forms for case entries, both non-competitive and competitive, as well as pre-registration forms. Let me know if you need any of these forms. It promises to be a good show, and it's always nice to be right along the coast. There will be camping available at the fairgrounds.

The 2010 show will be a combination AFMS/CFMS and will be held at the convention center in Riverside. It will be hosted by the Orange Belt Mineralogical Society, and they are already working on plans.

The report of the Nominating Committee was presented, and the following officers were elected for 2008: President Bural LaRue (elected in 2006), 1st Vice President CJ Quinoriano, 2nd Vice President Fred Ott, Treasurer Cal Clason, and Secretary Jim Brace-Thompson. The officers were installed at the evening banquet.

The committee chairpersons presented their reports either in a written report in the packets or a verbal report at the meeting. We have several persons in our Society who are serving on committees for the CFMS, and this next year they are as follows: Julaine Mullaney is on the Financial Advisory Committee, Frank Mullaney is on the Golden Bear Committee, and is Trophy Coordinator and Chairperson of the Nominating Committee, Frank Monez is on the Public Lands Advisory Committee (PLAC), Bill and Sharon Gissler are co-chairs of the Slide and Video Library, and Ruth Bailey is Parliamentarian.

The Federation dues are the same for this year since we did not have an increase in our insurance costs. However, the AFMS dues will probably be raised by 25 cents, and this will necessitate an increase in the CFMS dues. Currently CFMS dues are \$1.50 per member with 50 cents going to the AFMS. Our insurance rate is \$6.00 per member which means we are paying a total of \$7.50 per member. The AFMS has been operating under a deficit budget for some time and in many cases the people who are on the committee and working have not been collecting their expenses. This has allowed the AFMS to continue operating but makes it difficult for those persons who are working.

There are several interesting field trip reports which I will include in a later report and pass on to our field trip chairperson.

Safety First

by Bill Klose, EFMLS Safety Chair

Prior to lifting or carrying an item, consider:

1. How heavy or bulky is the item?
2. How good a shape are you in and have you had any back problems in the past after lifting? Many back problems are cumulative, where a repeated minor injury will flare up and become worse. Statistics indicate that about 80% of back injuries occur in people between 30-50 years of age.
3. How much space is there around the object to be lifted and how much space is around where it is to be set down?
4. What kind of obstacles are there along the transportation route, such as trip hazards, holes, protrusions, and overhangs?

If any of these question create a concern, or if there is any doubt, get help or use an aid such as a dolly, hand truck, or even a forklift to lift and move the object.

Be sure to wear appropriate safety equipment, such as safety shoes and work gloves, when lifting.

Prior to the lift, make sure you have adequate clearance for your hands and arms. Stand close to load with the feet apart and the toes pointed out to provide firm footing. Bend your knees, not your waist. Grip the load firmly with a "full palm grip". Do not place your fingers under the load. Tighten your stomach muscles and then lift your head and shoulders first and then with your back straight, use the strength of your legs to slowly and smoothly push up. "Jerk lifting" a load will multiply the stress to your lower back. Never hold the load away from your body, but hold it close to your body at all times with your back upright.

To raise a load above shoulder height, first lift to waist height and rest on the edge of a ledge, hip, or stand, and then shift hand positions so that the load can be boosted after the knees are bent. The knees should be straightened as the object is lifted or shifted to the shoulders. If the object is to be placed on a table or shelf, first set it on the edge, and then push it far enough onto the support so it will not fall. The load should be released gradually as it is set down and then pushed into place with the hands and body directly in front of it.

When setting a load down, keep your back straight and upright, bend your knees, and lower the load down slowly and smoothly. Do not add the weight of your body to the load. Keep your fingers and feet clear from under the load as you ease it down.

via The Franklin County Rockhounder, 10/2007, via EFMLS News, date unknown.

CFMS Field Trips- North Seminar

"Knowing Where You Are /Checking Land Status"

by Dick Pankey, Contra Costa M & GS

Last October, Dave Muster, our FT-N chairman, conducted this seminar, which was received with rave reviews. Unfortunately the attendance was low. By popular demand this seminar is scheduled again for April 12, 2008. It will be held in Pittsburg, CA and is hosted by the Contra Costa M & GS.

The purpose of knowing where you are is two fold. All field trip leaders and collectors need to know where they are, where they should not be, and where they want to be. While we may collect on public land - BLM and Forest Service land- we cannot collect on private or claimed land without permission. It is the responsibility of the field trip leader to know the status of the land and determine boundaries before people are led to an area with private land and/or claims.

This seminar addresses what you need to know about determining land status, choosing and reading maps, GPS, and other tools. Three presenters are scheduled to speak:

- Dave Muster will talk about 1.) Types of Land; 2.) Using visuals and compasses; 3.) Finding Markers; and 4.) Finding Townships, Section, and Range.
- Dennis Freiburger will talk about - Practical GPS and Digital Maps - A user-friendly approach to using the Global Positioning System.
- Dick Pankey will talk about Personal Responsibility on Field Trips.

This seminar addresses what you need to know about determining land status, choosing and reading maps, GPS, and other tools. This seminar is for field trip leaders and all rockhounds who enjoy collecting; all members and guests are welcome.

Please reserve your place at this seminar by notifying me at dickpankey@juno.com no later than April 7th. Cost of the seminar is \$5.00 and includes lunch.

The seminar will be held on Saturday, April 12, 2008 at the Community Presbyterian Church in Pittsburg, CA. An announcement flier with details and directions is available from your Field Trip Leader. This seminar is for field trip leaders, and all rockhounds who enjoy collecting; all members and guests are welcome.

Mark your calendar now, get the announcement flier, and join us for this informative seminar on April 12th.

An Invitation to the North Bay Field Trip Spring Meeting

by Dick Pankey, Contra Costa M&GS

The Contra Costa M&GS will host the North Bay Field Trip Spring Meeting on Saturday, March 15th. Registration with coffee and doughnuts begins at 8:30 AM, and the meeting starts at 9:30 AM. There are 20 clubs in the North Bay Field Trip (NBFT) that work together to arrange and share field trips and other activities. The spring meeting is very important. We hope your Field Trip leader and other members who enjoy field trips will attend. We have had many fine field trips this past year through the combined efforts and cooperation of NBFT and COOP. This business meeting is where we plan and announce future trips and events, report on past trips, hold a silent auction, and generally have a great time meeting and talking with other rockhounds.

All club members who are interested in field trips are encouraged to attend NBFT meetings, and to join in the fun and be active in NBFT events. We have interesting meetings with fine programs that should appeal to all members. This year's speaker is Bob Kanasaki, Naturalist at Black Diamond Mines Regional Park. It is a great place to socialize with other rockhound friends, enjoy a fine potluck lunch and best of all hear about field trips to come and reports on field trips just taken. At each meeting we have a great silent auction of rocks, minerals, specimens, slab, petrified wood, and much, much more!! You are invited to contribute auction items if you wish.

I have always looked forward to and enjoyed the NBFT meetings. Join us at the NBFT Spring Meeting on Saturday, March 15th.

Editor Note: Look for a flier at your next meeting. The meeting place is the Community Presbyterian Church, 200 East Leland Rd., Pittsburg, CA.

Red Sand

by Chuck Boblenz, SCVGMS member

If you have panned for gold in any part of the Sierras you will well remember the rush of excitement when your pan showed a tail of black sand as you swirled your pan. Seeing the tail makes one's heart beat faster as you look harder for that elusive shine denoting gold flakes in your pan.

Many folks have had this kind of experience, and the topic can be the center of conversation when a group gets into gold discussions and reminiscing of trips from the past. I must admit that it does give one a rush.

Recently Jeri and I journeyed up to eastern Washington near Wenatchee Lake and the town of Plain. Our oldest son had recently purchased a summer home on the Wenatchee River, which flows from Wenatchee Lake to the Columbia River, which it meets near the city of Wenatchee.

Shortly after taking ownership of the property, a group of booklets and Forest Service maps were found. The booklets provided some interesting reading and much useful information about what to look for and how to seek one's fortune.

article continues on page 12

The maps had been heavily used as shown with hand written notes, and some quadrants had been checked off in pencil. Those being marked appeared to be locations where creeks and water sources were shown to start, all flowing down to the Wenatchee River itself.

Wow! Now I was starting to see a possible pattern, and my enthusiasm was perking up and accelerating as we neared the town of Plain. It will be a real interest to see what the river will reveal, especially since I had packed my gold pans and extra tools into the truck with a twinkle in my eye.

After a couple of days chatting with family and friends, it was time to grab the gold panning equipment and head to the river.

The property backs onto the river itself and has a large island a short 15 to 20 feet from the river edge. The island is about 200 yards long and some 120 to 150 feet wide. The far side of the island borders the faster moving water for another 100+ feet before resting on the other bank of the river. This last bit of water moves rapidly enough to show small white capped waves along the surface. The earlier short stretch of water is very slow moving and well protected and shows a large number of pollywogs and salmon fingerlings.

A quick reconnoiter of the island shows it to be covered with river-worn boulders of a 12 to 14" diameter. All boulders are well rounded, suggesting they had traveled far to get here. Also, there were ten or so uprooted trees lying out there, root systems still attached. All appeared to have arrived a number of years ago and were quite dry.

A number of boulders showed books of mica to be breaking out of them and much sand was piled on the lee side of the downed trees where one would expect the flood waters to eddy and hopefully release any gold it may carry. OK. Now to get to work.

I selected one of the downed trees that seemed to have a nice pile of sand and started to use a hand shovel to fill my 5-gallon bucket. I did not fill it to much more than half full for fear it would be too heavy to carry to the water's edge.

I filled my 14" pan with sand and started the process. I soon got down near the bottom of the pan and did not see any black sand. Did I do the unthinkable? Did my haste cause me to swirl off the black sand too early? OK. Fill the pan again, slow down, and do a good job. I took my time and soon got to the pan's bottom. D_ _ n! Still no black sand! Where did I go wrong?

Upon a closer look, I could see a couple of complete crystal shapes which looked like garnets. This suggested that what I saw as red sand was garnet chips and pieces with an occasional complete crystal. Now it was starting to make sense and soon took away from the disappointment of not finding black sand.

The garnets and their chips appear to be almandine garnet which are a deep violet red and are often found in mica

schists, which also explains my earlier mica findings. The specific gravity is 4.3, thus explaining their heaviness in my pan and the chips showing a grading color all the way to a light pink.

With this new found information, I soon completed the bucket of material and went back for a second one. This time I went deeper into the sand near the tree in hopes of finding layers of garnets. I must confess that I had already tweezered the larger pieces and some of the prettier chips into a glass bottle.

A couple of days passed before I selected yet another site to dig. This site was a tree of wider diameter, and the sand on the lee side of it seemed to have a firmer packing to it. This time the red sand was more predominant, and some crystals were near 2 mm in diameter. It provided the start to a good sample collection from the area. I did find one boulder of bull quartz that showed a grouping of garnet crystals still intact within the quartz, but was a single boulder at the stream entrance to the river. No others were found.

This was a neat bit of exploring and fun doing some physical work for a change, cause to do further investigation. Now I know something about the garnets of the area and understand my surprise at the red sand. The next time, I will make every attempt to get down to bed rock to see if there are indeed crystals larger than 2 mm.

The next time you hear someone speaking of red sand, you will be conversant about it, and maybe you can run into some in your travels, as well. I hope you do, and then we can compare notes. I look forward to it.

Kinky Geological Facts

Compiled by Chris Fite of the Tulsa rock club, Oct, 2007, via the T-Town Rockhound Dec, 2007, via AFMS Newsletter, Dec 2007- Jan 2008

Sources: The Oxford Companion to the Earth, and Science News and others.

1. **Mountains are caused by the collision of Earth's slow moving surface plates.**
2. **Earth's plates move at about the same speed as the growth of the length of your hair.**
3. **Fission power of the radioactive elements in Earth allows and causes volcanoes, earthquakes, and mountains. Without fission power, the Earth would be all solid and geologically dead.**
4. **Barite roses in Oklahoma and the three-state Joplin, Missouri lead/zinc area are known worldwide. They are described in foreign language mineral books.**
5. **In Oklahoma, three miles of ocean sediments were laid down, then one and a half miles of the sediment has eroded away leaving one and a half miles of ocean sediment covering Oklahoma.**
6. **The deepest "trench" of sediment in the world is in Oklahoma.**
7. **Granites in Oklahoma are two billion years old.**

Continued on page 13

Continued from page 12

8. Dirt is loose (not consolidated) because rain washes away any cement that might bind it into a consolidated rock.
9. Sand in the Arkansas River came from the Rocky Mountains. If you examine the sand under a magnifier you will find pink blocky fragment of feldspar mixed in with the quartz sand. The feldspar and sand are the remains of Rocky Mountain granites. You will also find black magnetic magnetite.
10. Dirt is new...only a few hundred or few thousand years old. In rock years, that is like a baby less than a month old.
11. Meteor Crater in Arizona is the largest fresh crater in the world - about 35,000 years old.
12. The oldest and youngest large basalt floods or plateaus are in the United States. Oldest is near Lake Michigan, youngest is in states of Washington and Oregon.
13. The Great Flood described in the Bible occurred about 4500 BC when the Mediterranean Sea broke thru and spilled over near Istanbul in Turkey in to the area known as the Black Sea. Before the break and spill, the area was a much smaller fresh water lake.
14. At one time people thought the Earth was only 6,000 years old, according to the Bible. We now know the age is 4.7 billion years.
15. When the dinosaurs were alive, they could look out and see the Rocky Mountains...those mountains were there even in dinosaur times.
16. Birds are descended from the dinosaur...so not all of the dinosaurs died. Every time you eat chicken, you are eating a dinosaur.
17. Dinosaur were big, hot-blooded and numerous... people are some of the largest animals on earth, hot blooded and numerous. People are the "new" dinosaur. It is called parallel evolution... Two independent creatures can evolve towards the same character.
18. 42% of Canada overlies permafrost.
19. In Siberia permafrost is more than 1.5 km thick.
20. Cat litter is made of bentonite, a kind of clay found in large quantities in the state of Wyoming.
21. The oldest known mineral is zircon in sedimentary rock in Australia... 4.3 billions years old.
22. Where do mineral names come from? 45% are named after people (goethite), 23% are named for their locations of discovery (vesuvianite), 14% are named for their chemical composition (chromite), 8% are named for their physical properties (orthoclase), 10% are combinations and oddities (peristerite, tantalite)
23. Only 10% of species of life show up in the fossil record. Fossilization is rare, so the other 90% of the species we have no fossils of.

Arizona Ironwood

via Snoopy Gems, via West Seattle Petroglyphs, via The Agatizer 1/04, via Rocky Review, 3/04

The rich dark heartwood of the Arizona ironwood tree is one of the most beautiful woods in the world. Its grain structure and soft satin finish set it above all others, including the romance woods of the orient. The tree which produces this fabulous wood is native to the Southwestern desert, ranging across the southern half of Arizona into Upper Sonora, Mexico. The ironwood tree seldom grows above an altitude of 2500 feet and is most commonly found in dry foothill country edging the desert. The tree is very sensitive to frost, and any area sustaining it is usually considered suitable for the growing of citrus. The ironwood tree is a spiny, semi-evergreen that often achieves a height of 30 feet. The tree is very slow growing and a large tree is probably several hundred years old.

Depending on local conditions, it requires from fifty to a hundred years or more for an ironwood tree to cure properly after it dies. The best wood for working is usually obtained from trees that have cured in a standing position. Fallen trees are subject to the attack of carpenter ants, termites, worms, and the action of sand and running water. Seldom is a useable log found on the ground.

Ironwood is very dense and is one of the hardest woods in the world. Its specific gravity is 1.2, and the wood sinks in water like a rock. While very hard, ironwood is also brittle and can withstand but little side pressure without splintering. Special tool steel points are used when turning the wood, and pieces shaped by hand are formed with a rasp.

One point that should be emphasized is that curing cracks and checks are characteristic of the finest wood. The great density of this wood is such that during the years required for complete curing, many shrinking cracks occur. These lines, that in other woods would be considered imperfections, should be regarded with the same respect given to matrix lines in the finest turquoise. Only very small pieces can be cut of ironwood that do not show a small crack or checks.

Articles made from ironwood, such as arrowheads, hoes, etc. have been found in prehistoric ruins dating from 1000 to 3000 years ago.

Single Item Competition

The Society is establishing single item competition for each of our study groups. This is to encourage members to participate in our show and to display their work when they are not able to put in an entire case yet.

As previously published, the following rules apply to each of the categories:

All competitors shall be Santa Clara Valley Gem & Mineral Society members.

Each competitor shall be limited to one entry for each award offered. Each entry shall have been made within the last two (2) years. All workmanship must be done by the competitor. Each entry must be labeled with the name of the material, and items submitted need to have two labels, one with the competitor's name and one without the competitor's name and with the material name.

All items will be judged by the Uniform Rules of the American Federation, and each item will start with 100 points. We are listing below the points which will apply to each group's entries:

Mineraleers:

These are the points for Thumbnail Minerals as listed in the Rules:

Labeling, 15; Showmanship, 15; Quality, 70.

Cutaways:

These points are the most used in the Lapidary section:

Labeling, 5; Showmanship, 15; Quality, 25; Variety, 10; Workmanship, 45.

Silversmiths:

These points apply to the majority of the Jewelry category:

Labeling, 15; Showmanship, 15; Quality, 10; Variety, 15; Workmanship, 35; Design, 10.

Fossileers:

These points are the most commonly used in the Fossil section:

Labeling, 30; Showmanship, 10; Quality, 30; Rarity, 5; Variety, 20; Reference List, 5.

Facet Cutters:

These points apply to the Faceted Stones:

Labeling, 5; Showmanship, 10; Quality, 10; Workmanship, 65; and Variety, 10.

Carvers:

Labeling, 5; Showmanship, 10; Quality, 10; Workmanship, 65; and Design, 10.

Stringers:

Labeling, 10; Showmanship, 10; Quality, 10; Workmanship, 55; and Design, 15.

Some of these points are somewhat arbitrary, and we may find that they need to be adjusted, but this should give us a good start. I would like to explain that the Showmanship category covers the way your piece is set up for display. All of the items will be in a case with other items which are similar, and you need to be sure that your piece is shown as well as possible.

Please get your application in to the Chairman as soon as possible, and you will need to have an application for each piece you are displaying. Applications are included on the Display Case entry form in this month's Breccia on page 15. If you have questions, give me a call at (408) 248-6195. Items to be judged must be given to the Chairman by setup day, April 3rd, at noon.

Ruth Bailey

SANTA CLARA VALLEY GEM & MINERAL SOCIETY

Member Display Case Application Annual Show - April 4, 5, & 6, 2008

NAME: _____

ADDRESS: _____

TELEPHONE: _____

I WILL FURNISH MY OWN CASE: _____ I WILL NEED A CASE: _____

DESCRIPTION OF EXHIBIT: _____

SPECIAL REQUESTS (space, lighting, etc.): _____

COMPETITIVE CASE: _____ NON-COMPETITIVE CASE: _____

COMPETITIVE CASE INFORMATION (Case to be judged by AFMS Uniform Rules)

Sub-Division: _____ Class: _____

Entry Level: Master _____ Advanced _____ Novice _____

Junior _____ Society _____

COMPETITIVE ITEM ENTRY FORM

Group: _____ Item: _____

Return this application on or before March 7, 2008 to:

**Member Display Chairman
Bill Gissler
1075 Blossom Dr.
Santa Clara, CA 95050**

Try A Club Awareness Project

by John Eichhorn, SCVGMS Member

Have your club members participate in a group project that will increase the public and government awareness of the rockhound's hobby. Organize and donate a display case of minerals related to your specific collecting areas.

This project idea was the result of a meeting with Erik Zaborsky and Brian White of the Hollister California BLM field office, and BAM (Bay Area Mineralogists), along with members of other San Francisco bay area rock clubs.

The purpose of the meeting was to gather opinions and ideas about the use, maintenance and possible closure of the Clear Creek Recreation Area. This area is a unique and important source for all rockhounds. One of the ideas stressed by the BLM officers was a need for participation by specific use groups in making your voice heard by the government. They want evidence showing a need for our use (and their jobs), to pass up the line. In other words "squeaky wheel gets greased."

Clubs can volunteer to donate items, have volunteers work day to help maintain, clean, and give opinions on the use of rock collecting areas.

The Santa Clara Valley Gem and Mineral Society's idea was to donate a display case of minerals, specifically collected from the BLM Clear Creek Special Recreation Management Area. We chose a wall hanger oak curio cabinet with a mirrored back and six glass shelves (Lincoln model by billscustomwoodworks.com). John Eichhorn organized the proposal and purchase of the case by the club, along with the continued correspondence with the BLM Office; Rick Kennedy provided specimens and the expertise in the identification and site location; and Frank Mullaney provided labels with the name and collection area, along with a dedication plaque.

The case of Clear Creek specimens was presented to Lesly Smith, Outdoor Recreation Planner, and installed on the wall of the Hollister field office lobby in December, 2007. This mineral display case project provides an excellent example of how we can provide or improve public and government awareness of our clubs and the use of our lands. A donated display project makes our presence seen and heard.

Get your club involved in a display project related to your particular collecting areas. Find BLM field offices, state or federal parks, county and city parks, libraries, museums, schools, that need a donated display. How about where you go for distant field trips? These areas have all of the above. A display project could even be a collaborative effort by regional groups.

Our cost estimate for the wall hanging curio cabinet is around three hundred dollars, with the specimens and labels being donated by club members. Get your club members involved in a group project. Start a donated club "Awareness" display case.

Rocky Five

Owner Frank Mullaney,
SCVGMS member

(408) 266-1791 or (408) 691-2656

We are suppliers of the following:

Barranca Lapidary Equipment
Diamond Sanding Belts
Cabochon Machines and Supplies
Diamond Blades
Trim Saws and Large Slab Saws
Wet Polishing Machines
Diamond Core Bits.
Tumblers and Tumbling Supplies
Grit and Polish
Other Lapidary Supplies
Bookends
Pen Bases
Engraving for Club Name Badges

Peregrine Rocks and Trading Post

Owners- Dean and Karen Welder
SCVGMS Members

<http://www.peregrine-rocks.com>

Great deals on Estwing Hammers
and Chisels and the Gem Scoop

Also available are Vibrating Tumblers
and Tumbling/Polishing Grit

And the "NEVER LOSE IT AGAIN"
Bright Red Field Collecting Bag!

**SANTA CLARA VALLEY GEM and MINERAL SOCIETY
GENERAL MEETING MINUTES
January 22nd 2008**

President Randy Harris called the meeting to order at 7:45 PM at the Belwood Cabana Club in Los Gatos. Members and guests were welcomed. Minutes were approved as printed in the Breccia. The board meeting will be at Ruth Bailey's home, on January 24th, 7:30 pm.

CORRESPONDENCE: Letters from: CFMS endowment fund, Hollister BLM office, Martin Zinn expo flyer, Third rock flyer, NBFT meetings notice, AFMS endowment fund, Sacramento Detecting Buffs, NBFT field trip notice for the Morgan Hill trip, Cal State Museum flyer and form, Vallejo Gem and Mineral Society show flyer.

NEW MEMBERS: Rita Trahan, Stephanie Haughton, and Steve Jobe were presented with their membership packages and welcomed to the club.

Demo Day: Saturday Feb 23rd, 10am to 3pm, at the Cabana club meeting hall. Come see all the study groups demonstrate their crafts.

SUNSHINE REPORT: See details in the Breccia.

HOSPITALITY: There were 48 members and 14 guests in attendance tonight.

STUDY GROUPS: See details in the Breccia for all groups. Contact the group leader for info and time.

Faceters will meet at Max Casey's house Saturday morning Feb 2nd, 9am to 12pm, please contact him if you plan to attend.

Jewelers Study group will meet Feb 7th at the Cabana club hall, 7pm to 10 pm.

Mineraleers will meet at Michael Paone's home. The topic will be Jade.

Cutaways and Carvers will meet Feb 9th at Randy Harris's house. 1pm to 4pm

Smithies: See Breccia

Stringers: See Breccia

PLAC: See details in the Breccia

FEDERATION: See details in the Breccia

SHOW: Show meeting January 29th at Ruth Bailey's home. Marc Mullaney has a sign up sheet for car rear window stickers for the show. June Harris has a wish list for the Kids Area, contact her if you can supply anything.

M/S/P to have SCVGMS host the 2009 CFMS show at the Santa Clara Fairgrounds.

MEMBER DISPLAY: See Breccia.

FIELD TRIPS: See details in the Breccia. SCVGMS has field trip to Morgan Hill. E-mail Dean Welder for any info. The TV show Cash and Treasures will be featuring the Benitoite Mine in a future program.

PROGRAM: Opal presented by Chuck Boblenz.

Meeting adjourned at 9:30 PM.

Respectfully submitted,

John Eichhorn, Secretary

**Santa Clara Valley Gem and Mineral Society
Board Meeting Minutes
January 24th 2008**

President Randy Harris called the meeting to order at 7:45 PM at the home of Ruth Bailey on January 24th. All board members were present. M/S/P to approve the minutes of the December 6th, 2007 meeting as corrected.

Correspondence: Letters from: Miller magazine refund, US Post Office refund, Craftmaster news form, three Dodge and Cox fund letters, San Joaquin Valley Lap letter returned, Calif. State Mining and Mineral Museum renewal form, two Empire Broadcasting Corp letters. Three show dealers chair letters. Scholarship letter received from SJ State. Thank you letter sent to the Oyler family for their donation to the club. Show notice sent to the CFMS newsletter.

New Members: M/S/P to accept Bob Kozak and Bill Spence as new members.

Treasurer's Report: M/S/P to pay bills. Audit report reviewed. M/S/P to accept audit report for the 2007 year. M/S/P to pay federation dues and insurance. Rick Kennedy will receive the CFMS newsletter, John Eichhorn will receive the AFMS newsletter. M/S/P to rollover the CD for six months at best interest rate. M/S/P to close the smaller savings account and roll into the checking account, unless there is a significant fee. D and C fund has the new signature card for the account. M/S/P to renew the Calif. Museum membership for 2008.

Committee Reports:

Show: Radio adds discussed. Magnifying loupe chosen as a show momento. Frank Mullaney bought show supplies at

Quartzsite. M/S/P to buy patches for the kids area. Press release produced by Matt Wood reviewed by the board. M/S/P to have KRTY radio station give a fifty percent off show flyer on their e-mail list, not to be combined with any other offer.

Unfinished Business: Discussion on Parliamentary procedure. M/S/P to buy tires for the club trailers at \$1103.00. E-mail will be sent to the scholarship recipients for the pot luck before the February meeting.

New Business: M/S/P to purchase CD program on jewelry for the club library. M/S/P to give the club quilt to John and Eva Surrell.

M/S/P to adjourn at 9:40 pm.

Everyone enjoyed refreshments after the meeting.

Respectfully submitted,
John Eichhorn, Secretary

Santa Clara Valley Gem and Mineral Society
Treasurer's Report
January 24, 2008

Beginning Balance		\$11,824.19
December and January Receipts		
Revolving Fund Returned	\$ 50.00	
Gail Matthews repayment of Copying of expense	\$ 17.31	
Dealer Fees	\$2207.50	
Kids Area Fees	\$ 471.00	
Dues	\$ 10.00	
Intitation Fee	\$ 10.00	
Replacement Check	\$ 232.50	
Miller Magazine	\$ 48.00	
USPS Refund	\$ 43.06	
Interest Income	<u>\$ 1.05</u>	
Total Receipts	\$3,090.42	
December and January Disbursements		
Cabana Club Rental	\$ 420.00	
Installation Dinner Cake	\$ 33.98	
Installation Dinner Expense	\$ 819.45	
AFMS Endowment	\$ 50.00	
Breccia Postage	\$ 31.90	
Expressions Breccia expense	\$ 48.50	
Expressions Kids Area fliers and member directory	\$ 112.99	
Overpayment and returned check fees	\$ 232.50	
Expressions Show fliers	\$ 146.14	
08 Show expenses and refreshments	<u>\$ 151.20</u>	
Total Disbursements	\$2,046.66	
Ending Balance		\$12,867.95