

Santa Clara Valley Gem and Mineral Society

Send Exchange Bulletins to:

June Harris
107 Dell Way
Scotts Valley, CA 95066



Please Deliver Promptly

BRECCIA

Santa Clara Valley
Gem and Mineral Society



All American Club

Volume 54
Number 7

San Jose, CA
July 2007

SCVGMS ELECTED OFFICERS

President: Randy Harris
(831) 438-5150
Vice President: Marc Mullaney
(408) 691-1584
Secretary: John Eichhorn
(408) 749-0523
Treasurer: Frank Mullaney
(408) 266-1791
Editor: June Harris
(831) 438-5150
Federation Director: Ruth Bailey
(408) 248-6195
Alternate Fed. Director: Gail Matthews
(650) 962-9960
Directors:
Rick Kennedy (408) 529-9690
Larry Moore (650) 941-4966
Dean Welder (408) 353-2675
Matt Wood (408) 744-9402
Jim Ziegler (408) 528-4907
Historian: Linda Spencer (408) 997-7319
Parliamentarian: Bill Gissler (408) 241-0477

SCVGMS COMMITTEE HEADS

Donation Receiving Committee Chairman:
George Yamashita
Field Trip Committee Coordinator:
Dean Welder
Field Trip Committee: Randy and June Harris, John Eichhorn, Marc Mullaney
Financial Advisory Committee: Ruth Bailey, Chuck Boblenz
Founder's Day Picnic Food: Carol Pimentel
Founder's Day Picnic Raffle: Pat Speece
Founder's Day Bingo: John Eichhorn
Hospitality: Claire Ferguson
Installation Dinner: Open
Future RH: Gail Matthews & Marsha Owen
Librarian: Pat Speece
Member Displays: Jim Ziegler
PLAC: (Public Lands Advisory Committee)
Frank Monez
Program: Bill Gissler
Refreshments: Marsha Owen and Denise Osterback
Secret Auction: Donation Receiving Comm.
Sergeant-at-arms: John Eichhorn
Show 2007: Marc Mullaney
Show 2008: Marc Mullaney
Silent Auction: John and Sylvia Palmieri
Social Committee: June Harris and Claire Ferguson
Sunshine: Ernestine Smith
Trailer Custodian: Herb Vogel
Trophies: Frank Mullaney
Webmaster: RK Owen

Santa Clara Valley Gem and Mineral Society

P.O. Box 54, San Jose, CA 95103-0054
Website: www.scvgms.org
Email: info@scvgms.org
Phone Number (408) 265-1422

An Invitation

This society is pleased to invite guests to attend general meetings, study groups, and field trips. General meetings are normally held the fourth Tuesday of every month at 7:45 PM at 100 Belwood Gateway (The Cabana Club), Los Gatos, CA 95032. Belwood Gateway is just south of Blossom Hill Road between Leigh Avenue and Harwood Road.

Our July general meeting will be on July 23, 2007 at the Cabana Club, 100 Belwood Gateway, Los Gatos, CA 95032 at 7:45 PM.
Our August general meeting will be on August 27, 2007 at the Cabana Club, 100 Belwood Gateway, Los Gatos, CA 95032 at 7:45 PM.
Our July board meeting will be on July 25, 2007 at Jim Zeigler's home, 2806 Addison Place, Santa Clara, CA 95051 at 7:30 PM.
Our August board meeting will be on August 29 at Frank Mullaney's home, 5705 Begonia Drive, San Jose, CA 95124 at 7:30 PM.

Our Society's Purpose: The inculcation of a love of rocks and minerals by the furtherance of members' interests in the earth sciences and by education in all facets of related educational activities with the promotion of good fellowship, proper ethics, and conduct.

Our Membership Requirements: Attendance at two general meetings within twelve months. This society is a member of the California Federation of Mineralogical Societies (CFMS) and is affiliated with the American Federation of Mineralogical Societies (AFMS). Dues are \$10.00 per year.

Our Newsletter, the Breccia, is published ten times annually. The deadline for most articles is the Sunday before the regular meeting. The Breccia Editor is June Harris who may be contacted by email at juneconeyharris@yahoo.com or by phone at (831) 438-5150. The Breccia is proofread by Linda Spencer. Ruth Bailey and Bill Norton handle all aspects of mailing. Exchange bulletins may be sent to June Harris at the following address: 107 Dell Way, Scotts Valley, CA 95066. Permission to copy is freely granted to American Federation of Mineralogical Societies (AFMS) affiliated clubs when proper credit is given.

Study Group Leaders

For information on a study group, please call the leader(s) listed below

Carvers	Frank Mullaney	(408) 266-1791
Cutaways	Frank Mullaney	(408) 266-1791
Facet Cutters	Max Casey	(408) 227-0526
Fossileers	Gail Matthews	(650) 962-9960
Future Rockhounds	Gail Matthews & Marsha Owen	(650) 962-9960 (408) 377-5373
Jewelers	Marc Mullaney	(408) 691-1584
Mineraleers	Chuck Boblenz	(408) 734-2473
Smithies	Kelly Van Vleck & Pat Speece	(408) 262-8187 (408) 266-4327
Stringers	Pat Speece	(408) 266-4327

Randy's Ramblings

I would like to welcome all of the new members who have joined the club. I invite you to take advantage of the many study groups and upcoming trips that are planned for the near future. If you are planning on going on field trips sponsored by other clubs, please contact Dean Welder for information. He is listed in the club directory and here in the Breccia.

The Founder's Day Picnic was a lot of fun. I would like to thank Art and Carol Pimentel for doing all of the planning, shopping, cooking, etc. Thanks to Pat Speece for running the raffle. I would also like to thank John Eichhorn for calling the Bingo games. Thanks to all of you who brought prizes for the raffle and Bingo. If you were not able to be there, I urge you to go next year. It is always a good time with excellent food and camaraderie.

Marc Mullaney has agreed to serve as Show Chairman for the 2008 show. This will be his third year in a row. We need someone to assist Marc with this task. If you can help, PLEASE call Marc or me, and offer your assistance. I do not expect new members to take on a job like this, but some of you who have been members for a while need to become more involved in the show and other club activities. This only works with everyone's help.

There will be a Potluck Barbeque before the July and August meetings. We will eat at 6:30 PM at the Cabana Club. Please bring your favorite salad, side dish, or dessert to share. The club is providing meat, drinks, and paper goods.

I hope everyone has a great summer.
Randy Harris, President

Demo Days

Our next demo day will be August 11th at the Belwood Cabana Club located at 100 Belwood Gateway, Los Gatos. We will have representation from all of our study groups including: cabochon making, fossils, Stone Dawgs (kid group), faceting, beading, and minerals to start with. We also may have geode polishing, sphere making, and a few other items of interest. For more information, please call or email Marc Mullaney at 408-691-1584 or geologistm@aol.com.

Dues were due on June 1 and are now past due. Please send your dues to:
SCVGMS Treasurer
Frank Mullaney
5705 Begonia Drive
San Jose, CA 95124
Adult dues are \$10.00
Junior dues are \$3.00
Please pay promptly.



Stringers by Pat Speece

Stringers have made some changes. Starting with our next group, we are meeting for mostly one-shot/single-project meetings. Here is our schedule as planned so far.

Saturday, July 14, 2007, we will meet at 1 pm to make Linda's Bracelet. Beginners are to come at 12:30 pm to learn some basics relevant to Linda's Bracelet.

Monday, July 30, 2007, we meet from 7 to 9 pm to make Donna's Bracelet. Beginners are to come at 6:30 pm to learn some basics relevant to Donna's Bracelet.

Saturday, August 25, 2007, we meet at 1 pm to make Grace's Bracelet. Beginners are to come at 12:30 pm to learn some basics relevant to Grace's Bracelet. This is a new offering.

Thursday, August 30, 2007, we meet from 7 to 9 pm to make the Daisy Bracelet. Beginners are to come at 6:30 pm to learn some basics relevant to the Daisy Bracelet. This is also a new offering. For each project, we will supply a materials list, as well as local and online sources. We ask members to sign up for the classes since we only have room for five students at a session. Signups can be made at a general meeting, by email (sparkylarky@sbcglobal.net), or by phone (408) 266-4327.

Thanks, Pat Speece and Suzi Bahr

Check out what our study groups are doing!!!

MINERALEERS BY CHUCK BOBLENZ



A group of six joined the Mineraleers for their meeting where the topic was Field Trips and Field Identification. A variety of topics were discussed: early trip preparation, ways to get information about local areas, and a review of field testing methods.

Georgiana brought a specimen that was passed around, and some simple tests were performed that helped put the stone into a category for further tests. In addition, two other pieces were passed around and had some very quick responses from the group as they identified a limb cast and a piece of Horn coral.

The meeting was adjourned to the kitchen where Jeri had delicious refreshments for the group.

This was the last meeting of the Mineraleers until September, so please watch your BRECCIA for further dates and topics. The Mineraleers wish everyone a pleasant summer and hope that your field trips are outstanding and you bring back lots of neat materials.

See you in September.

Chuck Boblenz



Smithies by Kelly Van Vleck

The Smithies will be conducting their next class during the month of August. The Smithies will be holding a mandatory pre-meeting on Tuesday, July 10th at 7 PM at Pat Speece's home. So far there are four people selected for the class and there is one more space to fill.

The class will run on Tuesdays and Thursdays in the month of August, starting with 7, 9, then 14, 16, then 21, 23, and the last week will be Monday and Wednesday, August 27 and 29. Those who have been selected will be notified in plenty of time to make the July 10th mandatory meeting.

Any questions, please call either Pat (408) 266-4327 or Kelly (408) 262- 8187.



The next Jewelers meeting will be July 5th, at 7 PM at the Cabana Club located at 100 Belwood Gateway, Los Gatos. We started an interesting project last month by making soldered jump rings and stretching them to form ovals. We took these ovals and soldered them together for links in a necklace or bracelet. This month we will finish the project and possibly begin a slightly more complicated bracelet involving stone setting, soldering, and links. Materials needed will be the standard jewelry tools, plenty of 20 and 22 gauge silver wire. Copper wire from Orchard Supply Hardware can be substituted, if needed. I will also have some personal supplies that people can reimburse me for. For more information please call or email Marc Mullaney at (408) 691-1584 or geologistm@aol.com.

MING TREE Workshop by Diana Nelson

The first gem tree workshop was held on June 16th at Diana Nelson's house with two people in attendance. We learned basic wire twisting and put together a small bead tree. This took about 2 1/2 hours. The next meeting will be on Saturday, July 21st, at 1:30. We will have instructions for making a second type of tree. If you have any questions, please call Diana at (408) 274-2181. Please bring 24 gauge craft wire and wire cutters.

Two New Study Groups Information Below

The Cutaways Lapidary Group and the Carvers will be starting again. If you are interested in participating in either of these groups, contact Frank Mullaney at (408) 266-1791 or email him at rockyfv@aol.com.

Member Displays By Jim Ziegler

I have some brief notes to convey. The June meeting was the Silent Auction, so the Member Displays were on hiatus. Next month we continue, bigger and better. The July program is Agates from Idar-Oberstein, Germany. Impress us and bring along your finest agates.

Also, this is the second installment of the MYSTERY MINERALS. Bring something to stump the experts. You've got something without a name, don't you?

The scheduled Member Display participants are: Denise and Travis Osterback, John and Sylvia Palmieri, Howard Perry, Mike Perry, Ted and Kathi Peverini, Dennis and Patricia Phelps, Georgiana Rudge, Jesus and Anne Ruiz, Rich and Niki Santone, and Frank and Grace Santos. Everyone is invited to bring something to display at each and every meeting. Our schedule is just a reminder that everyone is encouraged to bring something to share at least once each year. See you at the meeting.

Meet Our New Members

Approved at the June 2007 Board Meeting

Donald Butler— 540 Bonita Avenue, space #414, San Jose, CA 95116-3315, (408) 280-1833. Donald is interested in cutting and polishing, collecting, silversmithing, faceting, and geology.

Betty Dean— P.O. Box 2010, Hollister, CA 95024(831) 634-0528. Betty is interested in cutting and polishing, silversmithing, and stringing beads.

Tim LaFlame— 1566 Llagas Road, Morgan Hill, CA 95037, (408) 779-0124. Tim is interested in cutting and polishing, collecting, geology, and minerals.

Welcome to Donald, Betty, and Tim. We hope that you will look into joining a study group in the near future. Questions about our club? Contact a board member for answers.

SUNSHINE BY ERNESTINE SMITH

We are sad to announce the death of Richard (Rick) Reeder. He was a long time member of our club, living in Sunnyvale before he moved to Carson City, Nevada and then to Harbor, Oregon. Even after he moved away, he came back to help with our yearly Gem and Mineral Show and worked especially on security.

Rose Kirsch had surgery a few weeks ago. She is much better now and is making plans to go back to work. Our good wishes are with her for a full recovery very soon.

If you have information concerning any member who is ill, hospitalized, or has had a death in the family, please contact our Sunshine person, Ernestine Smith, (408) 395-5035.

SCVGMS July Meeting Program Idar-Oberstein Agates

by Bill Gissler

Let's go for a summer vacation trip to Germany. Bill Gissler and Linda Spencer will share with you memories from their 2006 trips as they visited Idar-Oberstein, the agate center of the world. The program will also feature the 2006 AFMS winning video program "German Agates" by Doug Moore and narrated by John Heusinkveld. Enjoy views of the lovely German countryside with a focus on the four regions where the world's prize agates are found. From the many colorful specimens, learn about the different types of German agates and where to find them. And of course, please bring your special agate specimens and jewelry to share.

CAN YOU HELP WITH A RIDE?

Marilyn Barnes needs a ride to and from the monthly meeting. She lives near Branham and Camden Avenues. If you can help, call her at (408) 264-6599.

SCVGMS 2007 Calendar



July 5 Jewelers meeting 7-10 PM at the Cabana Club.

July 7 Faceters meeting 9-noon at Max Casey's home. RSVP to Max at (408) 227-0526.

July 10 Smithies mandatory meeting.

July 14 Stringers meeting at Pat Speece's home

July 21 Ming Tree Workshop at Diana Nelson's home at 1:30 PM.

July 24 *Potluck/BBQ before meeting at 6:30 PM, Regular Meeting at 7:45 PM at the Cabana Club. The evening's program will be on Agates from Idar-Oberstein with displays by Bill Gissler and Linda Spencer.*

July 26 Board Meeting at 7:30 PM at Jim Ziegler's home.

July 30 Stringers meeting at Pat Speece's home

August 4 DRC Rock Sale at Pat Speece's home.

August 11 Demonstration Day at the Cabana Club from 10 -3.

August 25 Stringers meeting at Pat Speece's home

August 28 *Potluck/BBQ before meeting at 6:30 PM, Regular Meeting at 7:45 PM, both at the Cabana Club.*

August 30 Board Meeting at 7:30 PM at Frank Mulaney's home.

August 30 Stringers meeting at Pat Speece's home

September 25 *Regular Meeting at 7:45 PM at the Cabana Club. Nominating committee elected.*

September 27 Board Meeting at 7:30 PM at June Harris' home.

October 23 *Potluck before meeting at 6:30 PM, Regular Meeting at 7:45 PM, both at the Cabana Club.*

October 25 Board Meeting at 7:30 PM at Marc Mulaney's home.

October 27 Demonstration Day at the Cabana Club.

November 27 *Regular Meeting at 7:45 PM at the Cabana Club. Election of Board and Silent Auction throughout the meeting.*

November 29 Board Meeting at 7:30 PM. Location to be determined.

December 4 Installation Dinner at the Cabana Club.

December 6 Board Meeting at 7:30 PM. Location to be determined.

The July and August General Meetings will each have a barbeque at 6:30 PM before the meeting. The club will provide the burgers, condiments, buns, and drinks. Everyone is asked to bring a salad, dessert, or side dish to share.

DRC Report by Jane Yamashita

Chalk up another successful sale for the DRC. Our sale in June was very busy. We made \$494.95 for the club coffers. We had a lot of people come and buy lots and lots of rocks. We really appreciate the help that many of the DRC committee members have given us with hauling, cleaning, sorting, and selling the rocks. It takes many hours of hard work. Our next rock sale will be held on August 4th. Hope to see you there.

Upcoming Field Trip Opportunities

Contact Dean Welder (408) 353-2675 for information about the below field trips. Dean will make the appropriate introductions for you to be able to attend.

July 28-29 Fairview (east of Fallon NV) for agates and geodes

August 4-5 Edward's Crossing, Yuba River, North San Juan/North Bloomfield area for gold panning.

August 11 Sutter's Gold Mine

August 20-24 Virgin Valley, NV for opal fee digs

August 24-27 Echo Mt. Stone, CA for volcanic material, fee dig.

August 27-31 Davis Creek. Lassen Creek for obsidian.

September 1-3 Cedarville, CA for petrified wood

September 15-16 7th annual Tailgate Gemboree at the Kennedy Mine from 9-5.

September 23-29 Southern Utah for petrified wood.

October 6 San Andreas area for serpentine and to Stories in Stone, presentation by Russ Shoemaker.

October 27-28 Kettleman Hills, CA for fossils

BE SAFE - BE WELL

by Don Monroe, AFMS Safety Chair

The skull and crossbones symbol always intrigued me as a kid. I always thought about pirate ships and other exciting things, and my hero was Errol Flynn. My dad constantly warned me about touching anything that had the skull and crossbones label on it. On the farm we had a large variety of poisons for the mice in the barn as well as pesticides and herbicides and a set of hazards that you don't see much anymore. These other hazards were in a couple of old trunks that had belonged to my grandfather who was a doctor and the county health officer and included medicines, chemicals and tubes containing the residue of the lab work such as dried-up specimens. I realized later that this was some really bad stuff.

The world has become infinitely more complicated and we are learning that there is much more bad stuff out there. Even our peanut butter is not safe as some of it contains salmonella and some of the green healthy vegetables may have e-coli. Where will it end?

Do you do lapidary work or metal work making jewelry? Are you familiar with cadmium and the severe health effects resulting from exposure to cadmium and its fumes? Cadmium is found in many solders and many fluxes and really should be avoided. There are fluxes that contain fluoride and are not totally safe to use. Do you use any tools made from beryllium and its alloys? It is not good for you! The jury is still out on the potential health effects of aluminum. There are those that say that there is a connection between using aluminum cookware and the incidence of Alzheimer's. Coated cookware is suspected to be a hazard if used after the coating has begun to fail and copper cookware that is losing the coating of nickel or whatever is used. Supposedly the bare copper surface will react to some foods. Am I simply perpetuating an urban legend or are the cautions pertaining to cookware well founded? I do not know but we will still stay with cast iron and stainless steel.

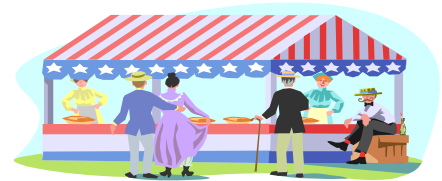
Do you have a Geiger Counter or some other instrument for detecting radiation? If you have one, do you use it? Some years ago there was some imported silver scrap and sheet that was "hot". It was radioactive and a point of concern. I cannot verify this story and it supposedly happened some time ago and the material is probably no longer on the market. There are, however, some mineral specimens that you should not put under your pillow at night just like the old "bad" cell phones that are no longer on the market. While we are talking about specimens, are you familiar with the minerals that have an unhealthy level of arsenic? Some minerals will rub a dangerous amount on your hands when you handle them. Since I am not writing a book, I cannot tell you a lot that you need to know about minerals but I do encourage you to do a little research and be particularly cautious when you are dealing with material that you do not customarily use.

Do you have pets such as cats or dogs? Have you heard about the contaminated pet food? Are you concerned? I, for one, am absolutely furious that anyone would put profit ahead of the well being of our trusting pets who are always glad to see us when we return home and never criticize us or pass judgment unless we forget to do our duty such as feed or walk with them or whatever we are supposed to do. This last thing is something that I just heard about from my proofreader (wife). She heard that some of the pre-moistened, disposable, mop pads cause liver problems in animals. It is reported that the pet gets the chemical on their paws and then lick their paws. Look at the packaging for a cautionary note regarding children and extend this warning to the pets.

There are so many bad things going on that we all must develop a skeptical attitude about everything and be constantly vigilant. Hazards are everywhere.

CFMS Show Schedule

Changes to this calendar are printed in italics. For the latest version of the CFMS Show Schedule go to www.cfmsinc.org



July 14-15 2007, Culver City, CA Culver City Rock & Mineral Club
Culver City Veteran's Memorial Complex Culver City Veteran's Memorial Auditorium 4117 Overland Avenue Hours: Sat. 10 - 6; Sun. 10 - 5 Website: CulverCityRocks.org Phone: (310) 836-4611

August 3-5 2007, Nipomo, CA Orcutt Mineral Society St. Joseph Church 298 S. Thompson Ave. Wes Lingerfelt (805) 929-3788
August 4-5 2007, San Francisco, CA, San Francisco Gem & Mineral Society, San Francisco County Fair Bldg., Ninth Ave. & Lincoln Way, Hours: Sat. 10-6 Sun 10-5 Ellen Nott (415) 564-4230

August 31 - Sept. 3 2007, Fort Bragg, CA Mendocino Coast Gem & Mineral Society Town Hall, Main & Laural Hours: Sat. & Sun 10-6; Mon. 10-4 Don McDonell (707) 964-3116

September 15-16 2007, Redwood City, CA Sequoia Gem & Mineral Society, Community Activities Building, 1400 Rosewood Ave., Hours: 10-5 both days, Carol Corden (650) 248-7155, Email: ccorden@earthlink.net Website: sgms.driftmine.com

September 22 2007, Los Altos, CA Peninsula Gem & Geology Society Recreation with Rocks Rancho Shopping Center Foothill Expressway & Springer Road Hours: Sat. 9:30am - 4:30pm David Muster (408) 245-2180 Email: colleen.mcgann@hds.com

September 22-23 2007, Downey, CA, Delvers Gem & Mineral Society, Woman's Club of Downey, 9813 Paramount Blvd., Hours: Sat. 10 - 6; Sun. 10 - 4, Steve Miller (562) 633-0614, Email : guynelallen@sbcglobal.net

October 7 2007, Fallbrook, CA Fallbrook Gem & Mineral Society "Fall Festival of Gems" FGMS Museum 123 W. Alvarado Hours: 10-4 Mary Fong-Walker (760) 723-3484 Email: mrwizard@tfb.com

October 13-14 2007, Grass Valley, CA, Nevada County Gem & Mineral Society, "Earth's Treasures", Nevada County Fairgrounds, 11228 McCourtney Road, Hours: 10 - 5 both days, Cliff Swenson (530) 272-3752

October 13-14 2007, Lakeside, CA, Cajon Valley Gem & Mineral Society, Lakeside Rodeo Grounds, 12584 Mapleview, Hours: 10-5 both days, David Newton (619) 390-5054, Email: jontom@nethere.com

October 13-14 2007, Trona, CA, Searles Lake Gem & Mineral Society, "66th Annual Gem-O-Rama", Searles Lake Gem & Mineral Society, 13337 Main Street, Hours: Sat. 7:30 - 5; Sun. 7:30 - 4, Bonnie Fairchild (760) 372-5356, Email jbfairchild@verizon.net, Website: www1.iwvisp.com/tronagemclub/tronagemclub.html

October 20-21 2007, Anderson, CA Shasta Gem & Mineral Society, Shasta District Fairgrounds, Hours: Sat. 9-5: Sun. 10-4 Bill Seward (530) 365-8641

October 20-21 2007, Placerville, CA El Dorado County Mineral & Gem Society El Dorado County Fairgrounds 100 Placerville Drive Hours: 10 - 5 both days Jackie Cerrato (530) 677-2975 Email: jacobcer@directcon.net Website: eldoradomineralandgem.org

October 20-21 2007, Santa Rosa, CA Santa Rosa Mineral & Gem Society Veterans' Memorial Auditorium 1351 Maple Avenue, Santa Rosa Hours: Sat. 10-6, Sun. 10-5 Shirley Mattson or Tom Dering / (707) 795-1730 or (707) 564-4537 Email: squirly48@yahoo.com or farmarch@sonic.net Website: www.gem-n-i.org

November 3-4 2007, Concord, CA, Contra Costa Mineral & Gem Society, Centre Concord - 5298 Clayton Rd. Clayton Fair Shopping Center, Hours: 10 - 5 both days Sam Woolsey (925) 837-3287

November 3-4 2007, Lancaster, CA, Palmdale Gem & Mineral Society, 2551 W. Ave. H, Hwy 14, Hours: 9 - 5 both days, Susan Chais-

sin-Walblom (661) 943-1861, Email: SLChaisson@yahoo.com, Website: pgms@antelecom.net

November 10-11 2007, Yuba City, CA, Sutter Buttes Gem & Mineral Society, "Festival of Gems", Grace Franklin Hall, 442 Franklin Avenue, Hours: Sat. 9 - 5; Sun. 9 - 4 Cliff Swenson (530) 272-3752

November 17-18 2007, Oxnard, CA, Oxnard Gem & Mineral Society, 800 Hobson Way, Hours: Sat. 9 - 5, Sun. 10-4, Miriam Tetrault (805) 642-5779, Website: www.OGMS.net

How the CFMS

Scholarship Fund Works

by Jo Anna Ritchey, Chair,
CFMS Scholarship Committee

Your Club or Society can nominate someone as a Scholarship Honoree prior to the November Business Meeting.

The person must have made great contributions toward furthering the purposes and goals of the California Federation of Mineralogical Societies. The person does not need to be a member of a Club or Society.

Honorees selected (to be announced at the November business meeting) will have the opportunity to offer a \$2,000 scholarship to the college or university of their choice.

The scholarship will go to a student who will be attending that school as a junior or senior in the fall term, majoring in the Earth Sciences or Jewelry Arts, and achieving a 3.0 [or higher] grade point average.

By October 15, 2007, write to:

Jo Anna Ritchey, Chair, CFMS Scholarship Committee
224 Oaks Ave., Monrovia, CA 91016

National Rockhound & Lapidary Hall of Fame

submitted by Ruth Bailey

Did you know that like Football, Baseball, etc. Halls of Fame, there is a Rockhound and Lapidary Hall of Fame? Two enthusiastic rockhounds, June Zietner and her husband from South Dakota were successful in establishing a National Rockhound & Lapidary Hall of Fame in Murdo, South Dakota, several years ago. Each year a new person is named to this Hall of Fame in each of these areas—Minerals, Lapidary, Metalcraft, Fossils, and Tribute (deceased). This is not a function of AFMS, but is a separately operated event.

I know that you each know an outstanding person in a category of some phase of our hobby. If you think someone deserves to be listed in the Hall of Fame, make a nomination any time before April 2008.

How to Make a Nomination:

1. List name, address, and phone number of your nominee.
2. Choose a category: Minerals, Lapidary, Metalcraft, Fossils, or Tribute (deceased)
3. Include the name of a contact person, their address, and phone number.
4. Mail to: Maxine M. Wilson, Curator, NRL Hall of Fame, HC 74 Box 21, Murdo, SD 57559-9215.
OR Email to: rlwrench@starband.net
OR submit from the website: www.rockhoundhalloffame.org
5. Include as much information as possible about the nominee and the reasons they should be inducted into the National Rockhound and Lapidary Hall of Fame.

Nominations may be made anytime. Balloting on nominations will be in April of each year. If the nomination comes in too late to be included in that year, it will be used next year.

ALAA April 2007 Report on Congressional and Government Agency Activities.

By Jon Spunaugle

The U. S. Congress and the Government Land Management Agencies, US Forest Service (USFS) and Bureau of Land Management (BLM) continue to make progress on several fronts of interest to the ALAA and "rockhounds" interested in access to public lands.

The U. S Congress is moving ahead with two identical Fossil Preservation Bills (S 320 and HR 554). The Senate Bill S-320 is listed on the Senate Calendar and will be voted on in the next few weeks. Very likely shortly after the Senate resumes from the Easter Break. The House Bill HR 554 is being reviewed by two Committees; House Natural Resources Subcommittee on National Parks, Forests & Public Lands; and House Agriculture Subcommittee on Department Operations, Oversight, Nutrition, and Forestry.

These committees may review the Bill and report on it. However the Speaker of the House of Representatives has the authority to place the Bill as introduced on the House calendar without comment or consultation with the committees. Comments by rockhounds on these Bills should go to your Congressional Representative immediately if they are to have any effect on the Bills passage which seems likely. Congress is also considering 14 new Wilderness designations which will be reviewed in the next report.

The US Forest Service is continuing to push forward with land sales under the 2008 Federal Budget and the National Forest Land Adjustment for Rural Communities Act. Their recent actions have been to add additional land parcels for sale. The purpose is to raise funds for use by local communities affected by Forest Service curtailed logging activities.

Information on the parcels of land being offered for sale can be found on the Internet at <http://www.fs.fed.us/land/staff/spd.html>. Though most of the parcels are small isolated lands, several are not and could affect rock collecting. The ALAA urges interested rockhounds to review these parcels and report back to the ALAA on any that contain known collecting locations.

The Bureau of Land Management and the US Forest Service continue to review roads open for use by ATV's and have been holding meetings open to the public for public input. These are great opportunities for interested rockhounds to let the public land managers know their feelings on road closures. As Congress continues to reduce the funding for roads and road maintenance by the public land managers the more roads will be closed. To have an input into which roads will stay open and which will be open to ATV access, you need to attend these meetings. One of our best sources of information on these input opportunities has been our association with the Blue Ribbon Coalition. They publish a wealth of information on their web site at <http://www.sharetrails.org/>. The information can also be found by researching the information on the Federal Register.

If you don't speak up and take advantage of these meetings and public input opportunities, someone else will be speaking instead of you and they may be saying something entirely different from your views.

Rockhounding and Camping in BLM's Clear Creek Area

Adapted by Frank Monez, information from the BLM CA website: http://www.blm.gov/ca/st/en/fo/hollister/clear_creek_management_area.html

Hobby gem and mineral collectors are drawn to the Clear Creek areas by the presence of over 150 semi-precious minerals and gemstones. One of the most highly mineralized areas in California, collectable minerals include serpentine, jadeite, cinnabar, tremolite, topazite, nepuntite, and benitoite. Some minerals such as benitoite are extremely rare, and the Clear Creek area is practically the only place where they may be found. Look near rocky outcrops and stream channels for these minerals.

Several commercial gem collectors also maintain mining claims and work in the area. The only known commercial deposit of benitoite is found on a patented mining claim (private land) in the Clear Creek area. A beautiful mineral, benitoite is phosphorescent and is prized almost as much as diamonds. The unique geology also attracts geology students and researchers from local and national universities.

Camping is permitted throughout the area, with the exception of the San Benito Mountain Natural Area, which is closed to camping. There are also some stream terraces in the Clear Creek canyon, which are closed to vehicle use and car camping, in order to protect rare plant habitat and occurrences. The six Staging Areas and the Oak Flat Campground are all open to camping and have dumpsters and pit toilets. There is no running or potable water in the area. Even with the presence of dumpsters in some locations, we always appreciate you packing out your garbage, and leaving a clean campsite.

The club periodically conducts field trips to the area. It is about 100 miles from San Jose, making it satisfactory for a one day trip. Some camping is available. Details for the field trips will be found in future Breccias.

Federation Director's Travels and Report

by Ruth Bailey, SCVGMS Federation Director

Montella and I left on June 7 to attend the AFMS Directors meeting in Roswell, New Mexico, and the CFMS Directors meeting in Lancaster, California. We had been looking forward to the trip for some time and were glad to be on the road.

On the second day we visited my niece in Phoenix and drove on to Tucson. Two more days took us to Roswell where we checked into the motel and drove around the town. We didn't find any aliens, but did find the museum and lots of traces of them.

There was a very short Rules meeting on Tuesday (it set a record of 15 minutes). These meetings used to be two days long and now they are usually a half day.

The AFMS meeting was held on Wednesday, and was followed by the AFMS Scholarship Foundation meeting. Both of these meetings were finished quickly. One item of interest to our members is the appointment of an Ad Hoc Committee to study and perhaps stage Inter-Regional Field Trips. Dick Pankey was appointed to chair this committee.

The competition judging was on Thursday as this was a four day show. There were 39 entries in competition, and 19 trophies were awarded. Of these, 7 were won by members of the California Federation. so we were pretty proud of our entries.

Montella and I left on Sunday morning to make the trip to California and to Lancaster. On the way through Arizona we stopped at the Painted Desert, the Petrified Forest, and the Grand Canyon, so we were able to see a lot of beautiful country.

The Fairgrounds in Lancaster were very nice. We had two large buildings for the show and a smaller building for the federation meeting and the banquet. They were all air conditioned.

The competition judging was on Friday morning, and we had 19 entries (I believe). Jesus and Anne Ruiz had entries in the single item competitions, and they both scored well. Jesus won a plaque for his carving entry in the advanced class. At the Directors meeting, Rockatomics, a club from Southern California, rejoined the Federation. They have 22 adult members and 3 juniors.

A report was presented on the 2008 show which will be in Ventura, CA, on June 27-29. We have had several CFMS shows at this fairgrounds and it is a lovely spot. There is camping in the parking lot, and it is right next to the beach so we can walk on the beach and enjoy very nice weather. A bid was presented from the Orange Belt Mineral Society for the 2010 combined AFMS/CFMS show, to be presented at the Riverside Convention Center on August 5-8. This bid was accepted.

We left for home on Sunday morning and arrived about 3:30 PM—glad to be home and put our feet up.

Idar-Oberstein Area

by Bill Gissler

Gem activity in the Idar-Oberstein area, a cluster of villages located in the rolling hills of West Germany, is deeply rooted historically. The area is located about 25 miles east of Trier, the oldest city in Germany. The history of Oberstein has been the most authenticated and documented of all agate-cutting villages.

Lapidary activity in the area dates from the 15th century. Agates found in nearby mines were cut and polished in jewelry mills operated by water power. The earliest document found on agate-cutting is dated 1454, and the first ordinance issued on agate-diggers was 1497. By the end of the 16th century there were 15 water-driven jewel mills along the Idarbach. The Counts of Oberstein, protectors of the craft, issued a guild ordinance for agate-cutters in 1609. However, at about 1800, the deposits of agate were exhausted, and work had to be abandoned. The gem cutting trade was ruined, and many cutters emigrated. 1826 is said to be the year when Idar-Oberstein emigrants discovered agate fields in south Brazil. They sent rough stones to their native town beginning in 1834. By 1840 a regular import trade developed. The gem cutting trade flourished once more, and new jewel mills were set up. By 1867 there were 153 water-driven jewel mills in the Idar-Oberstein area.

An electric power station was built in 1900, making people independent of water power. Gem cutting and setting became home industries, and the water-driven jewel mills fell into decay. The old method of the craftsman lying on his stomach on a tipping stool and pressing the hard stone against an enormous sandstone wheel four feet or more in diameter was replaced by the use of electrically-driven equipment. Since the turn of the century, rough stones have been imported from all parts of the world. They are cut and polished as gems and sold in Germany and abroad. And the home industries of once more than 600 lapidaries,

which were handed down in families for generations, have moved into large establishments. The lapidary work is now carried on in modern high rise buildings which cover areas of over 1/2 a city block.

Caved in galleries can still be found in the vicinity of Idar-Oberstein, the former entrances to the mines. This region is now a national protected area. The Heimat-museum, the city museum, displays an assortment of all minerals found in the area, especially local agates that were the foundation of the industry. The museum has a water-powered gem grinding mill where stone cutters work in the old-fashioned way, lying on their stomachs.

Not far away is the Felsenkirche, "Church in the Rocks". It is the emblem of Oberstein today. It was built at a spectacular site on the side of the cliff, constructed at a natural niche in the rock, 164 feet above the Nahe River. Most parts of the church date from 1482.

Bill Gissler and Linda Spencer at our July 24 meeting will be showing you pictures from their trips in 2006.

World's Oldest Meteorite Found

via Rock Chips, 5/00; via The Tumble Rumble, 6/04.

The world's largest and oldest meteorite has been discovered in China near the northeastern city of Shenyang. The meteorite, locally called Haushita Hill, is estimated to be 4.5 to 4.6 billion years old and fell to earth 1.9 billion years ago.

The meteorite mound is 600 feet long, 250 feet wide, and about 300 feet deep. It weighs about 200 million tons and is covered with granite. The meteorite is older than any natural earth rock. The site is planned to be a state protected nature reserve.

Meteoroids, Meteors, and Meteorites—Part 1

by Zeb William Rike III

Pine Country Gem and Mineral Society via the Pineywoods Rooter, November, 2006

Since meteorites are rare rocks and we are rock collectors, we need to be aware of what they are so we can recognize them. How common are they? On various websites you will read estimates from “you will never find one” to “anyone can find one”. Calculations (a) suggest that each year in Texas one meteorite will fall weighing more than 22 pounds, 4-6 weighing more than 2.2 pounds, and 39 weighing more than 3.5 ounces. Estimates are that 40,000 tons of cast off asteroids and comet material enters the earth’s atmosphere every year, with only about 1% reaching the surface other than as dust (b); other estimates suggest 100-1000 tons/day (c).

Meteorites are rocks that have fallen from the sky – that is rocks that originated on one celestial body and fell onto the surface of another. Most are remnants of asteroids which were violently broken up by collisions in the early years of our solar system (d), though a few are from the moon or Mars (e), having been hurled into space by violent impacts. These rocks have wandered in space for perhaps billions of years, each in its own orbit, until their path crossed ours.

A rock moving silently through space at hypervelocity is called a meteoroid. If it enters our atmosphere, the streak of fire is called a meteor (‘shooting star’), most of which burn up in the atmosphere and reach the ground as slowly settling fine dust. If the rock in space was large enough for some remnant to reach the ground, this will be called the meteorite.

Most meteorites are ‘rocks’, though some are iron and a lesser number are stony-iron. Chondrites or achondrites (stony meteorites) make up ca. 93%, irons make up around 6% and pallasites and mesosiderites (stony-iron) make up about 1% of the meteorites that have fallen to the earth. (f) A chondritic meteorite may superficially resemble sandstone.

How can we identify a rock as probably being a meteorite? First, look at as many pictures of meteorites as you can find to see what they look like. Then when you have a suspect in hand, there are several positive indications which may identify a rock as a probable meteorite, and several which almost certainly rule out the possibility. I have summarized these from several sources to which I refer you for more detail. (g, h, i, j)

1. *Is it different from other rocks in the area?* Something clearly out of place warrants further study.
2. *Is it noticeably heavier than ordinary rocks?* Iron-nickel meteorites will be about three times denser than most rocks, and have a characteristic surface. Some predominantly stony meteorites will have up to 20% free metal and will be heavier than expected. (however, many metal ores are also heavy.)
3. *Is it magnetic? Is a powerful magnet hanging on a string attracted to it?* All the iron meteorites as well as many stony meteorites with free metal are magnetic. (However, some metal ores are magnetic.)
4. *Does it have a thin fusion crust?* High speed passage through the air will melt and blow away the surface, leaving a thin (less than 1 mm) fusion crust, usually black or brown. (If it has a thick crust or rind, it is almost certainly not a meteorite.)
5. *Does it have an aerodynamic shape?* High-speed passage through the air will result in blowing away of the molten surface, leaving a streamlined, “nose cone” shape, perhaps with flow lines.
6. *Does it have dime-sized “thumbprint” indentation?* These “regmaglupts” are also formed by high speed air blowing away molten material.
7. *Does it contain nickel?* No common rocks contain nickel while all meteorites with free metal do. Some simple chemical spot tests can detect nickel; I would suggest contacting the Chemistry Department at a University.
8. *If a corner is ground slightly or chipped off, does the interior show silvery metal?* If so, and the sample is attracted to a magnet, this is a good indication.

9. *Are there conspicuous bubbles?* Too bad. Conspicuous bubbles indicate lava.
10. *Does it show large, conspicuous crystals or fossils?* Crystals in meteorites are neither large nor showy and no meteorites have ever been found with obvious fossils.
11. *Does it give a “streak” on an unglazed porcelain streak plate?* This is not typical of meteorites, and would likely indicate hematite or some such material. The underside of a toilet tank lid is unglazed porcelain and can be used for this test. (It should be noted that rust from an iron meteorite would give a “streak”.)
12. *If it has quartz, it is not a meteorite.*
13. *If it will scratch window glass, it is not a meteorite.*
14. *If it has veins, swirls, foliation, radiating features, tubes, layering or any kind of linear or planar features, it is not a meteorite. No meteorite is a sedimentary rock.* (Some stony meteorites do have veins of iron.)
15. *If it is spherical or has a botryoidal surface, it is not a meteorite.*
16. *If “the ground is covered with it”, it is probably not a meteorite.*
17. *If it is reddish on the inside or whitish, it is probably not a meteorite.*
18. *If you picked it up along a road or railroad, it is likely not a meteorite.*
19. *If it is radioactive, it is not a meteorite.*
20. *If it consists of hematite or magnetite, it is not a meteorite.*

The Planetarium in Hermann Park in Houston, TX has several meteorites on display. I would recommend a visit to such a collection to see in person what a meteorite looks like—or rather the variety of types there are. A superb collection is the Monnig Meteorite Gallery at TCU in Fort Worth, TX (k). This is a little far for a club field trip, though I will see it as we go to Fort Worth several times a year. They have about 3000 meteorites including the only known specimen of the Kirbyville meteorite for example.

The best meteorite pictures I have seen in print are those in the “Robert Haag Collection” book (l) and in the August 2006 ASTRONOMY magazine (m). Haag is located in Tucson, Arizona and has exhibits at the Tucson show. In ad-

dition, there are numerous fine WEB sites with meteorite pictures that will give you as much information as you might want. (n, o, p, q) As with most Internet sites, all of these have highlighted links to take you to further information.

We have seen that meteorites are rocks just from a different celestial body. Most originate in the asteroid belt between Mars and Jupiter. The bodies orbiting there vary in size from pebbles to Ceres, the largest, with a diameter about one quarter that of our moon. The largest asteroids are spherical but most of them are irregular in shape as a result of collisions. Some are solid and some are ‘rubble piles’ held together by mutual gravitational attraction. (r, s, t) All have a ‘geological history’ with their present structure being a result of billions of years of accretion, melting, collisions, and alterations.

In the early universe, all was hydrogen and traces of helium. All the heavier elements were synthesized by thermonuclear fusion in the cores of stars (u) and were dispersed into space by a variety of mechanisms, the most spectacular of which is the explosion of a massive star as a ‘supernova’. The shock waves from the supernovas collide with and compress other gas clouds to cause them to begin collapsing to form stars. With time, the superheated vapors cooled and solids began to form—graphite, diamonds, refractory mineral grains (“stardust”), chondrules, grains of free metal, etc. In addition, many chondrules were result of flash heating that melted mineral grains that then cooled and re-solidified. With further cooling, organic materials and water condensed onto the grains.

Subsequently the dust clouds condensed to give small solid bodies that increased in mass with accumulation of more dust. These were continually colliding with each other, sometimes fragmenting to give (eventual) meteorites, sometimes merging to give yet larger bodies. The most primitive meteorites are the ‘carbonaceous chondrites’ which retain the volatile materials. They are dark gray to black and contain light colored mineral grains and millimeter sized chondrules.

As the ‘planetesimals’ grew in size, heat from decay of radioactive isotopes was trapped and the volatiles were baked out into the

vacuum of space, leaving the mineral matter as the source of 'ordinary chondrites'. (Or they formed in hotter parts of the solar nebula and never had the volatiles) If the body became large enough, internally generated heat caused the mineral grains to soften and stick together, the source of the 'achondrites' (without chondrules) meteorites. If the body became large enough to completely melt, the metallic iron and nickel sunk to the core (source of the iron/nickel meteorites) and the silicates became a mantle and crust, source of another group of meteorites. Finally, the stony-iron meteorites had their origin at the boundary between the core and mantle where complete separation had not taken place.

After most of the planetary bodies were in close to their present form, a period of heavy bombardment took place. This caused some rocks to be blasted into space from the surface of the moon and Mars, a few of which make it to the surface of the earth as meteorites. (v) At least one of the parent bodies from which the meteorites originated became large enough to hold liquid water, as salt crystals were found in a meteorite which was picked up immediately after impact, before being wet by rain. (w)

FOOTNOTES:

- (a) Estimates for the state of Arizona: <http://meteorites.lpl.arizona.edu/falls.html> and Quick Facts' on area of Texas and Arizona from US Census Bureau, from <http://quickfacts.census.gov/qfd/states/48000.html>
- (b) "How to Start Your Meteorite Collection", ASTRONOMY, Vol.34, #8, August 2006, p.71
- (c) "Party with the Perseids", ASTRONOMY, Vol. 34, #8, August 2006, p. 77
- (d) <http://www.meteorite.fr/en/basics/origins.htm>
- (e) "The Great Interplanetary Rock Swap", ASTRONOMY, vol. 34, #8, August 2006, pp. 64-67
- (f) ASTRONOMY, vol. 34, #8, August 2006, pp. 68-74; also <http://meteorites.lpl.arizona.edu/falls.html>
- (g) "Ask Astro: How can I recognize meteorites among other stones?" ASTRONOMY, vol. 34, #8, August, 2006, p 90
- (h) <http://www.meteoritearticles.com/>

- [foundmeteorite.html](#)
- (i) <http://meteorites.lpl.arizona.edu/tests.html>
- (j) <http://epsc.wustl.edu/admin/resources/meteorites/realities.htm>
- (k) <http://www.monniqmuseum.tcu.edu/news.htm>
- (l) The Robert Haag Collection of Meteorites, Private Collection Edition, © 2003, Published by Robert Haag Meteorites, Tucson, Arizona
- (m) ASTRONOMY, vol 34, #8, August 2006
- (n) <http://www.meteoriteman.com/>
- (o) <http://www.meteoritehunter.com/>
- (p) <http://epsc.wustl.edu/admin/resources/meteorites/meteorwrongs/meteorwrongs.htm>
- (q) <http://www.seds.org/nineplanets/nineplanets/meteorites.htm>
- (r) "Journey to an Asteroid", ASTRONOMY, vol.34, #3, March 2006, pp. 32-35
- (s) <http://www.meteorites.fr/en/basics.origins.htm>
- (t) <http://www.daviddarling.info/encyclopedia/A/asteroid.html>
- (u) <http://www.site.uottawa.ca:43231/astronomy/index.html>
- (v) "Unlocking the Solar System's Past", ASTRONOMY, vol.34, #8, August 2006, pp. 32-37
- (w) <http://www.psr.d.hawaii.edu/nov99/PurpleSalt.html> for discussion of the Monahans meteorite

Tip:

Measure Out:

Try this: Use a standard measuring teaspoon, fill it with grit of any size (course, medium, or fine), scrape with a flat surface such as a knife blade or ruler so that the spoon is filled flat from rim to rim and Voila! You have 1/4 ounce grit in the spoon. Polish is another story. It takes eight (8) level teaspoonfuls to measure out an ounce of polishing powder.

via The Pineywoods Rooter, 11/2006; via Stony Statement, 8/2006; via The Pegmatite, 1/2004; via The Show Me Geode, 2/2003.

Santa Clara Valley Gem and Mineral Society
General Meeting Minutes
June 26, 2007

Vice President Marc Mullaney called the meeting to order at 7:45 PM at the Belwood Cabana Club in Los Gatos. Members and guests were welcomed. Minutes were approved as printed in the Breccia. The board meeting will be at Matt Wood's home, June 28th at 7:30 pm.

Correspondence: Letters from: Three NBFT/CO-OP field trip notices, CO-OP field trip list, Fossils for Fun Kennedy Mine Gemboree notice, Gem and Mineral craft show notice, ad for jewelry supplies.

New members: Nancy Reineking, Michael Paone, Michael Bowker, Adrienne Comanda, Robert Payne, and Kathryn Payne were presented with their new member packets.

Sunshine report: See details in the Breccia.

Hospitality: There were 42 members and 11 guests in attendance tonight.

Study Groups: See details in the Breccia for all groups, Smithy's mandatory meeting Tuesday, July 10th; Stringer's have a new schedule and sign up sheet, Faceter's will meet at Max Casey's house Saturday morning 9am to 12pm, July 7th; Jewelry Study group will meet July 5th at the Cabana club house. Mineraleers will restart in the fall.

Demonstration Day : Next meeting will be August 11th, 2007, at the Cabana clubhouse from 10 am to 3 pm. Come see the variety of study group demonstrations.

Donation Receiving Committee: See details in the Breccia. June 16th sale totaled \$495.00. Next sale will be August 4th at the Speece's house.

PLAC : See details in the Breccia.

Federation: See details in the Breccia. Ruth Bailey has applications for Camp Paradise, Ruth and Montella attended the AFMS show .Anna Ruiz won a blue ribbon in carving. Jesus Ruiz thanked Ruth Bailey for her encouragement to enter case competition.

Frank Monez was presented with the Golden Bear Award by Ruth Bailey for his work in judging at shows, PLAC Committee, and PLAC Chairman North.

Field Trips: See details in the Breccia. Current local events: Benitoite Gem Mine Field Trip, July 1st, fee dig, contact Gem's Galore store in Mt. View, or Rick Kennedy.

Program : Silent Auction. At 8:15, tables 3& 6 were closed. At 8:35, tables 7&5 were closed. At 9:00, the rest of the tables were closed.

Founder's Day: Thank you to: Art and Carol Pimentel for organizing the barbeque, Pat Speece for organizing the raffle, and John Eichhorn for running the bingo. 34 members attended.

Next Meeting: Barbeque before the meeting, eating starts at 6:30 pm.

Dues are Due: The Treasurer, Frank Mullaney is collecting.

Check out the city of Santa Clara Senior's Center for a new lapidary work shop.

Linda Spencer has photo's of the rock sale and the picnic in the Historian's album.

Respectfully submitted,

John Eichhorn, Secretary

**Santa Clara Valley Gem and Mineral Society
Board Meeting Minutes
June 28th , 2007**

President Randy Harris called the meeting to order at 7:45 PM at the home of Matt Wood on June 28th. All board members were present except for, Frank Mullaney, Gail Matthews, Larry Moore, Dean Welder, and Parliamentarian Bill Gissler. M/S/P to approve the minutes of the May 24th, 2007 board meeting as read and corrected. Guest was Jennifer Le.

Correspondence: Letters from: SJMN bill statement, PO Box bill, two DMV paid fee statements.

New Members: M/S/P to accept Donald Butler, Tim Laflame, and Betty Dean as new members.

Treasurer's Report: M/S/P to pay bills.

Unfinished Business: Jewelry study group six month trial has ended.

M/S/P to continue renting Cabana club room for the Jewelry group, charge each participant five dollars per session.

Discussion on web site club documents, and changing web site for e-mail accounts. Matt Wood will contact R.K. Owens.

Ruth Bailey will be added to the bylaw committee.

Discussion on teacher's day at the demo day workshop. M/S/P to invite teacher's list to November demo day to view Kids Area information.

M/S/P to buy a new briefcase for the Federation Director.

Discussion on hosting 2009 Federation Show.

Discussion on increasing scholarship amounts and expanding the scope of the scholarship requirements. M/S/P to increase the two scholarship amounts to one thousand dollars each for students in the third or fourth year of a Geology major.

New Business: None.

M/S/P to adjourn at 9:20 pm.

Everyone enjoyed refreshments after the meeting.

Respectfully submitted,

John Eichhorn, Secretary

**Santa Clara Valley Gem and Mineral Society Treasurer's Report
June 20, 2007**

Beginning Balance		\$12,335.59
Receipts		
Donation Receiving Comm.	\$494.95	
Dues	\$110.00	
Jewelers Study Group	\$ 28.00	
Interest	\$ 1.27	
Check Cancelled/Rich Santone Dues Refund	<u>\$ 13.00</u>	
Total Receipts	<u>\$647.22</u>	
Disbursements		
Expressions June Breccia	\$ 48.50	
Sharr Choate Jewelry Award	\$ 48.71	
Cabana Club Rental	<u>\$490.00</u>	
Total Disbursements	<u>\$587.21</u>	
Ending Balance		\$12,395.60