

Santa Clara Valley Gem and Mineral Society

Send Exchange Bulletins to:  
June Harris  
107 Dell Way  
Scotts Valley, CA 95066



Please Deliver Promptly

# BRECCIA

Santa Clara Valley  
Gem and Mineral Society



All American Club

Volume 53  
Number 11

San Jose, CA  
November 2006

## SCVGMS ELECTED OFFICERS

President: John Eichhorn  
(408) 749-0523  
Vice President: Marc Mullaney  
(408) 691-1584  
Secretary: Randy Harris  
(831) 438-5150  
Treasurer: Frank Mullaney  
(408) 266-1791  
Editor: June Harris  
(831) 438-5150  
Federation Director: Ruth Bailey  
(408) 248-6195  
Alternate Fed. Director: Frank Monez  
(408) 578-7067  
Directors:  
Bill Gissler (408) 241-0477  
Larry Moore (650) 941-4966  
Pat Speece (408) 266-4327  
Lynn Toschi (408) 353-3323  
Jane Yamashita (408) 353-2982  
Historian: Anna Windsor  
(408) 926-8624  
Parliamentarian: OPEN

## SCVGMS COMMITTEE HEADS

Donation Receiving Committee Chairman:  
George Yamashita  
Field Trip Committee Coordinator:  
Adam Yamashita  
Field Trip Committee: John Eichhorn,  
Randy and June Harris, Jennifer  
House  
Founder's Day Picnic Food:  
June and Randy Harris,  
Jane and George Yamashita  
Founder's Day Picnic Raffle: Pat Speece  
Founder's Day Bingo: John Eichhorn  
Hospitality: Rich and Niki Santone  
Installation Dinner: Kathy McChristian  
Juniors: Mark and Debbie Wartenberg,  
Gary and Kathy McChristian  
Librarians: June Warne and Nancy Boring  
Member Display: Kelly Van Vleck  
PLAC: (Public Lands Advisory Committee)  
Frank Monez  
Program: Bill Gissler  
Refreshments: Claire Ferguson  
Sergeant-at-arms: Hershall Boring  
Show 2007: Marc Mullaney  
Silent Auction: John and Sylvia Palmieri  
Social Committee:  
June Harris, Claire Ferguson  
Sunshine: Ernestine Smith  
Trailer Custodian: Herb Vogel  
Trophies: Frank Mullaney  
Webmaster: RK Owen

# Santa Clara Valley Gem and Mineral Society

P.O. Box 54, San Jose, CA 95103-0054

Website: [www.scvgms.org](http://www.scvgms.org)

Email: [info@scvgms.org](mailto:info@scvgms.org)

Phone Number (408) 265-1422

## An Invitation

This society is pleased to invite guests to attend general meetings, study groups, and field trips. General meetings are normally held the fourth Tuesday of every month at 7:45 PM at 100 Belwood Gateway (The Cabana Club), Los Gatos, CA 95032. Belwood Gateway is just south of Blossom Hill Road between Leigh Avenue and Harwood Road.

**Our next general meeting will be on November 28, 2006 at the Cabana Club, 100 Belwood Gateway, Los Gatos, CA 95032 at 7:45 PM.**

**Our next board meeting will be on November 30, 2006 at John Eichhorn's home, 703 San Conrado Terrace, Apt 4, Sunnyvale, CA 94085 at 7:30 PM.**

Our Society's Purpose: The inculcation of a love of rocks and minerals by the furtherance of members' interests in the earth sciences and by education in all facets of related educational activities with the promotion of good fellowship, proper ethics, and conduct.

Our Membership Requirements: Attendance at two general meetings within twelve months. This society is a member of the California Federation of Mineralogical Societies (CFMS) and is affiliated with the American Federation of Mineralogical Societies (AFMS). Dues are \$10.00 per year.

Our Newsletter, the Breccia, is published monthly. The deadline for most articles is the Sunday before the regular meeting. The Breccia Editor is June Harris, who may be contacted via email at [juneconeyharris@yahoo.com](mailto:juneconeyharris@yahoo.com) or by phone at (831) 438-5150. The Breccia is proofread by Linda Spencer. Ruth Bailey and Bill Norton handle all aspects of mailing. Exchange Bulletins may be sent to June Harris at the following address: 107 Dell Way, Scotts Valley, CA 95066. Permission to copy is freely granted to American Federation of Mineralogical Societies (AFMS) affiliated clubs when proper credit is given.

## Study Group Leaders

For information on a study group, please call the leader(s) listed below

Cutaways	John Eichhorn	(408) 749-0523
Facet Cutters	Bill Norton	(408) 356-8254
Fossileers	Gail Matthews	(650) 962-9960
Juniors	Mark Wartenberg	(650) 568-6114
Mineraleers	Chuck Boblenz	(408) 734-2473
Smithies	Kelly Van Vleck & Pat Speece	(408) 262-8187 (408) 266-4327
Stringers	Pat Speece	(408) 266-4327

# John's Note

The yearly elections are here again. If you haven't joined in the fun, you can always fill any vacant positions that become available. Somebody else gets to be President next year, so now is my chance to thank everyone for their contributions to the club this past year. Every successful event or improvement was thru the efforts of dedicated members. Thank you everyone.

October 21<sup>st</sup>, our club hosted a NBFT field trip to the Clear Creek BLM area. We visited the Jade and Plasma sites along with the Calcite rose area. I think the most success was had at the Jade site.

James Robertson passed away in the middle of October. Jim had been a member of our club since 1985. He will be remembered for his chatoyant and asterism mineral displays and demonstrations at the show. He enjoyed giving talks about his chemical career and his work during WW II in the development of high temperature metal furnace liners made from minerals. We cannot forget his humor about getting older. A notice of his memorial service is in this issue of the Breccia.

Thank you,  
John Eichhorn

## Jim Robertson Remembered By Kelly Van Vleck

To all members of SCVG&MS, James Robertson passed away on Sunday evening, October 15th, after several months of illness. Jim loved rockhounding and geology and would go on a rock hunt at the drop of a hat.

Jim was also a golfer. He and another of our former members, Hal Kortright, I, and another friend of Jim's, Oscar Tryon, played golf together for quite a number of years. I remember when Jim got a hole-in-one at the Cypress golf course...he was so elated. His last game of golf was played at the Boulder Creek course in Boulder Creek just a week before he became ill. It was to be his best ever game at that particular course, and he was very happy with his score. We were all happy for him.

Jim's career was as a chemist for the FMC Corp., from which he retired, I think, at the age of 72. During Jim's early married life, he was interested in dancing and became a talented ballroom dancer. Also, I found out that Jim was a Dr. of Philosophy. He graduated from Cornell University. He was a very talented, generous, and thoughtful man.

I'm sure we will all miss Jim, especially at our annual show where he always shared his love of star stones with members, the public, and anyone who became interested in them.

I have lost a very good friend!

**Come one, Come all!  
Study Group Demo Day  
November 11 from 10AM -3PM  
at the Cabana Club.  
Call Marc Mullaney for  
more info (408) 971-6651  
or email him at  
geologistm@aol.com**

### Silent Auction

**Get Ready!!! It's coming up fast.  
November meeting is the date.  
Bring your goodies to be auctioned and  
your money to spend. Could be you will  
buy an early Christmas present for yourself.  
Questions??  
Call John Palmieri (408) 272-2369**

### Rock Sale

Sponsored by:  
SCVGMS Donation Receiving Committee

What a bargain!

Our next sale is Saturday, Nov. 11, 2006, from 9am till noon. All items will be 25 cents per pound. This will be the last sale of the year. Come fill up your bags and boxes with the rocks you were iffy about at 50 cents per pound. We want to greatly lower the inventory before we put everything away for the winter. We are in a very, very generous mood! If it is raining, we are still going to have the sale. Snow and hail? Maybe. Call first. Come to the Speece home at 2357 Loma Park Court, San Jose, CA 95124. For further information, call George or Jane at (408)353-2982, or Pat at (408)266-4327. Join the fun! See you at the sale!

# Check out what our study groups are doing!!!

## MINERALEERS BY CHUCK BOBLENZ



The Mineraleers met at the Boblenz' residence with eight members in attendance. The topic was copper and its associates, and several members brought specimens to share with others throughout the evening. Jim Ziegler brought a large specimen that drew much discussion as identification was tried by the group. Several non-copper specimens were shared, looking for identification.

The meeting had lively discussions throughout the evening. Jeri served delicious dessert following the meeting as discussions continued.

The next meeting will be on November 13, and the topic will start a series of discussions on crystal structures and how they apply to minerals. The title may seem heavy, but all attempts will be made to make the topics easily understood.



## Stringers and Smithies by Pat Specce



Sign-ups for both groups will be available at the November general meeting. In January, the Stringers will meet for one month on Tuesdays and on Thursdays. Changes will be made so we will not conflict with either the general meeting or with the board meeting. Stringers will have new projects introduced. Basic knowledge and skills will be stressed.

Smithies March lessons will be on soldering --- all types of soldering, as well as a few new techniques. All Smithies are encouraged to sign up. Since soldering is basic to most projects, all Smithies and wannabees are encouraged to take this class.

Both groups will be awarded a completion certificate by the instructors upon successful completion. Exact dates for both sets of classes will be given at the November general meeting. Stringer questions?

Email Pat at [sparkylarky@sbcglobal.net](mailto:sparkylarky@sbcglobal.net) or phone at 408-266-4327.

Smithie questions? Email

Kelly at [kellyv22000@yahoo.com](mailto:kellyv22000@yahoo.com), or

Pat at [sparkylarky@sbcglobal.net](mailto:sparkylarky@sbcglobal.net)



## Cutaways

While the Cutaways study group does not currently have a meeting place, they will continue to work at the Demonstration Day on November 11 at the Cabana Club. Bring your Genie or preformed cab to work on one of the machines that will be present.



## Fossileers By Gail Matthews

On Nov. 22 there is a one-hour talk at either 11:30 or 12:30 on Velociraptors by the dino docent at the Cal Academy of Science. We could see the dinosaur exhibit from China at the same time. Please contact me if you are interested.

In Dec, along with the first activity day for the Merit Badge Program, we will have be looking at and attempting to identify fossils that are brought in. This is your opportunity to share with others those items that have a mystery to unravel. I will have several reference books available for this purpose.

## Faceters



The Faceters will be represented at the upcoming Demonstration Day on November 11 at the Cabana Club. If you have an interest in picking up this skill, come by and sign up for a lesson.

## You are ready for that leadership if you:

1. Can discipline your emotions; do not feel you must have an opinion on every project or subject.
2. Can be sincerely interested in the progress of others, can relax and enjoy participating.
3. Have the courage and strength to influence others with simple logic and common-sense.
4. Constantly work to improve your mind— to stretch your horizons, can be fair and objective in decisions.
5. Can sublimate self for good of the cause, avoiding close door intrigues and icy superior.
6. Organize your life to provide time for preparation and observation.
7. Realize that your personal attitudes, priorities, and decorum are role models to others.
8. Accept fully the responsibilities of the position you assume.
9. Are self-confident, physically fit, and mentally alert.
10. Can remember that most successful people come with simple credentials—love of people and a willingness to help.

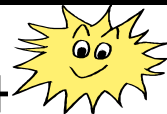
Edited from Toastmistress Magazine Article (1976),  
Nettie Meissner; via Rock Chips, March 2006

## October Program Reviewed

By Bill Gissler

“Trees of Stone”, the story of petrified wood found in the vicinity of Vantage, Washington, on the Columbia River was the October meeting program. The 6,000 acre Ginkgo Petrified Forest State Park, museum, and interpretive center located there, was described by a 15-minute video. The video presented the two theories on how the petrified trees got there. The reason the natural occurrence of the petrified wood is in question is because no standing trees have been found at Vantage. All the logs are found lying down and no rooted stumps have been discovered. Professor George Beck of Washington University, working in the 1930s, was the first to recognize that the logs must have been transported into the area and most likely represented the trees of different habitats. Bill Gissler displayed pieces of petrified wood he had obtained in the area. Petrified wood is the Washington State gem because of its beauty and abundance.

## SUNSHINE BY ERNESTINE SMITH



Chuck Spencer's mother, Julia Spencer, passed away peacefully in her sleep at her home in Zillah, Washington, on Monday, October 16th. She was 99½ years old. Our condolences to both Chuck and his wife, Linda.

Frank Mullaney's father passed away in October. Our condolences are also offered to Frank and the rest of the Mullaney family.

If you have information concerning any member who is ill, hospitalized, or has had a death in the family, please contact our sunshine person, Ernestine Smith, (408) 395-5035.

## Member News

This month we welcome Michael Avilucea as a new member. He lives at 545 S. 7th St. #110, San Jose, CA 95112. His phone number is (408) 286-5919 and his email is mik570@comcast.net. Michael is interested in cutting, polishing, collecting, and silversmithing. Welcome, Michael.

## AFMS Merit Badge Program

By Gail Matthews

The kick-off introduction night for the Merit Badge Program will be at 6pm, before the general meeting, on Nov 28. For the kids, please bring a notebook, paper, and writing implement so you can organize paperwork provided and take notes. We will discuss each of the 9 merit badges that can be earned and try to answer all questions. This evening introduction will be followed by a 3-4 hour activity day in December which will focus on collecting, with the opportunity to bring in parts of your rock, mineral, or fossil collection for discussion and identification. For those eager for an earlier preview, the program can be accessed online through our club's website or by going to [www.amfed.org](http://www.amfed.org). Just remember, the main key to this whole program will be FUN WITH FLEXIBILITY, as individuals may wind up working on different badges at different rates, and we will work our program around the other club-scheduled events.

## SCVGMS Calendar



**November 9** Show meeting at Ruth Bailey's at 7:30 PM

**November 11** Study Group Demonstration Day at the Cabana Club, 100 Belwood Gateway, Los Gatos, CA 95032 from 10 AM– 3 PM

Call Marc Mullaney for more information

**November 11** DRC Rock Sale from 9AM—12 PM at Pat Speece's home, 2357 Loma Park Court, San Jose, CA 95124 (408) 266-4327.

**November 13** Mineraleers meeting at Chuck Boblenz' home at 7:30 PM

**November 28** *Regular business meeting, election of officers, and Silent Auction at 7:45 pm*

**November 30** Board meeting at John Eichhorn's home (408) 749-0523

**December 5** Installation Dinner at the Three Flames Restaurant. Please remember to bring an unwrapped toy to donate to Toys for Tots.

**December 7** Combined Board Meeting at Pat Speece's home (408) 266-4327

## Proposed Bylaws Change

By June Harris

I presented a proposal to change the current editor job requirements to the Board in August. It was discussed at the August meeting, and at the September Board Meeting was approved to be presented to the general membership at the October meeting for questions and discussion.

Presently the bylaws (Article VI, Section 6) are stated the follows: ***"The Breccia Editor shall prepare the Breccia each month. All Regular and Board Meeting minutes shall be published verbatim. The Editor may appoint a publisher to assist."***

The proposed change would be stated as follows: ***"The Breccia Editor shall prepare the Breccia a total of 10 editions per year. All Regular and Board Meeting minutes shall be published verbatim. The Editor may appoint a publisher to assist."***

As this is a change to the Bylaws, it will be necessary for this to be presented to the membership at a regular meeting. It can be voted on at the next regular meeting and requires a 2/3 vote for passage.

**"Ugly Rock" Contest at the November meeting. Bring your ugliest rock to compete. You'll have thirty seconds to describe your rock, tell where you found it, and garner support.**

**Embellishments:  
Story -- yes  
Rock -- NO!!**

**Pat Speece and Jim Robertson were last year's winners. I wonder who will win this year?**

## Upcoming Field Trip Opportunities

Contact John Eichhorn (408) 749-0523 for information about the below field trips. John will make the appropriate introductions for you to be able to attend.

**November 18** Stoneyford Area, CA for jaspers, hematite, agates, minerals. Sutter Buttes Gem and Mineral Society

**November 22-26**, Wiley Wells, CA for agate, jasper, geodes, psilomelane, petrified wood, etc. CFMS Field Trip, South.

**November 22-26**, Afton Canyon, CA for Jasper and fluorite, Mother Lode Mineral Society

**January 11-15**, Burro Creek, AZ for jasper, opalite, apache tears, and more, Contra Costa Mineral and Gem Society

## Bureau of Land Management Land and Mineral Records—LR2000 System

By John Martin, PLAC South

via Napa Gems 9/2006

The bureau of Land Management is pleased to announce that the public reports for the Land and Mineral Records-LR2000 system is now available for use from 4:00 AM to 11 PM Mountain time.

The Bureau of Land Management manages more land — 261 million surface acres— more than any other Federal agency. Most of this public land is located in the 12 Western states, including Alaska. The BLM, an agency of the US Department of the Interior, also administers 700 million acres of on-shore minerals throughout the nation.

Congress created the General Land Office (GLO) in 1812 to handle the increasing land business from the rapid westward expansion. The GLO was given the responsibility for maintaining the land and mineral records. These and other land and mineral records are now maintained by the BLM, which is entrusted with keeping what today amounts to more than two billion records. Many of these records are now available through this site.

### Who would benefit from using the Website?

This Website was designed for those who work in the oil and gas industry, title companies, utilities, state and local governments, ROCKHOUNDS, etc. that require access to BLM Land and mineral records. Previously, the only way a person could access this information was to visit one of the BLM Information Access Centers. This website enables users to access the same information over the Internet. We have provided a tutorial to guide you through the reporting system. If you need assistance, please visit or call the BLM Information Access Center nearest you.

### What Information does this system provide access to?

**Case recordation** contains information on leases, permits, contracts, grants, agreements, mineral patents, etc. issued by the BLM on federal actions affecting public lands of the United States. Authorizations are issued for the following activities: oil and gas, coal and other minerals, sand, gravel right-of-ways, land exchanges and acquisitions, land use withdrawals, mineral patents, land classification, land claims, land sales, etc. Information on the use authorization includes customer data, location, date of issuance, the actions that have taken place, and other applicable information.

**Legal Land Description** contains cadastral survey data including meridian, township, range, section, survey type (aliquot part, lots, homestead survey, mineral survey, tracts, parcels, etc.), acreage, and geopolitical information including the geographic state, county, field office, and surface management agency (BLM, Forest Service,

etc.). The surface management agency is LLD coded as BLM, even when the land is privately owned, unless the land is located within a National Park, National Forest, etc.

**Mining Claims Recordation** contains information on un-patented mining claims located on federal lands including claimant name, approximate location, and other applicable information. Mineral patents are not contained in Mining Claim Recordation.

Status contains information on title transfer documents, such as land patents and warranty deeds, to and from the United States Government. Status also contains withdrawal information which is used to determine surface and subsurface segregations on a parcels of land.

To find out more about the **Bureau of Land Management land and Mineral Records-LR2000 system**. Go to the Website listed below: <http://www.blm.gov/lr2000/>

**Want to view, search, and access your land and mineral records using a map viewer?** Go to the Website below.

[Http://www.geocommunicator.gov/GeoComm/index.shtm](http://www.geocommunicator.gov/GeoComm/index.shtm)

These Sites are user-friendly and are interactive. They contain a wealth of information of interest to rock hounds, Pebble Pups, and BLM Land Users, (That's all of us in the CFMS).

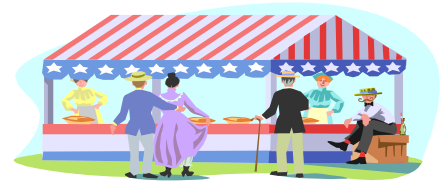
### Gemstone Durability

Ref. Rock and Gem 9/93 via Petrograph 10/2006

Proof of the durability of *crystals* lies, in the occurrence of gem forms of orthoclase feldspar and oligoclase feldspar, in the gravels of Montana, Brazil, and India. Feldspars decompose quite easily into clay once exposed to weathering. Feldspars tend to enclose other minerals in granite pegmatites. The term *poikilitic* is used to describe this occurrence. Pegmatites of Brazil are rich in feldspar, the most common mineral in the granite. Deterioration of the feldspar releases the more resistant minerals, tourmaline, beryl, columbite-tantalite, quartz, and topaz. Worldwide, clay-filled vugs may yield sapphire, olivine, garnet, spinel, zircon, and even diamond. Gem Crystals with a less flawed internal structure survive weathering out and even transportation into gravel bars. There are three distinctly different types of sedimentary gem deposits, depending on what happens to the gems once released from their matrix. If they stay put, lying about on the bedrock, the deposit is referred to as *residual*. If residual gems have moved some from their source that is called *eluvial*, but if water has transported the gems, the deposit is *alluvial*. These crystals tend to be slightly heavier than other rock-forming minerals and they accumulate in the same way as placer gold. Residual and Eluvial gems suffer little abuse, but Alluvial gems can be worn and rounded if they have traveled far from their source. Such gems are true survivors. The superb oligoclase feldspar *moonstones* of Sri Lanka are a case of Gem crystal survival. Crystal survivors are usually the purest forms of their species, with strong and stable bonding.

# CFMS Show Schedule

Changes to this calendar are printed in italics. For the latest version of the CFMS Show Schedule go to [www.cfmsinc.org](http://www.cfmsinc.org)



## 2006 Shows

**November 4-5 2006**, Concord, CA Contra Costa Mineral & Gem Society Centre Concord; 5298 Clayton Road Hours: 10 - 5 each day Bill McKay (925) 439-8195 Email: [williamrmckay@hotmail.com](mailto:williamrmckay@hotmail.com)

**November 4-5 2006**, Lancaster, CA Palmdale Gem & Mineral Club "Rock n Gem Roundup" Antelope Valley Fairgrounds 2551 West Avenue H Hours: 9 - 5 both days Susan Walblom (661) 943-1861 Rodney Shillings (661) 400-5198 Email: [slchaisson@yahoo.com](mailto:slchaisson@yahoo.com) Website: [pgmc@antelecom.net](http://pgmc@antelecom.net)

**November 4-5 2006**, Ridgecrest, CA Indian Wells Gem & Mineral Society Desert Empire Fairgrounds Call (760) 375-8000 for RV parking 520 S. Richmond Road Hours: 9 - 5 both days John De Rosa (760) 375-7905

**November 4-5 2006**, San Diego, CA San Diego Mineral & Gem Society Al Bahr Shrine Center (behind Hampton Inn) 5440 Kearny Mesa Road Hours: Sat. 9:30 - 5; Sun. 10 - 4 Wayne Moorhead (858) 586-1637

**November 10-12 2006**, Sacramento, CA Sacramento Mineral Society 64th. Annual "Harvest of Gems" Scottish Rite Center 6151 H Street Hours: Fri. 9 - 5; Sat. 10 - 6; Sun. 10 - 4 Sheldon Shuper (916) 383-9153 Email: [jfosback@aol.com](mailto:jfosback@aol.com)

**November 11-12 2006**, Anaheim, CA American Opal Society Clarion Hotel Anaheim Resort 616 Convention Way Hours: Sat. 10 - 6; Sun. 10 - 5 Website: [opalsociety.org](http://opalsociety.org) Jim Lambert (714) 891-7171 Email: [jlamb777@yahoo.com](mailto:jlamb777@yahoo.com)

**November 11-12 2006**, Yuba City, CA Sutter Buttes Gem & Mineral Yuba Sutter Fairgrounds (Franklin Hall) 442 Franklin Avenue Hours: 9 - 4 both days Cliff Swenson (530) 272-3752

**November 18-19 2006**, Livermore, CA Livermore Valley Lithophiles The Barn; 3131 Pacific Avenue Hours: Sat. 10 - 6; Sun. 10 - 5 Joyce & Dick Friesen (925) 447-8223  
Email: [friesenjoyce@ixinet.com](mailto:friesenjoyce@ixinet.com)

**November 18-19 2006**, Oxnard, CA Oxnard Gem & Mineral Society Oxnard Performing Arts Center 800 Hobson Way Hours: Sat. 9 - 5; Sun. 9-4 Norb Kinsler (805) 644-6450 Show website: [www.ogms.net](http://www.ogms.net)

**November 18-19 2006**, Victorville, CA Victor Valley Gem & Mineral Club San Bernardino County Fairgrounds 14800 7th Street Hours: Sat. 9 - 5; Sun. 9 - 4 Jo Ann McPurdy (760) 217-2628 Website: [www.gbeal5084@aol.com](http://www.gbeal5084@aol.com)

**November 25-26 2006**, Barstow, CA Mojave Desert Gem & Mineral Society Barstow Community Center 841 Barstow Road Hours: 10 - 5 both days Gene Haines (760) 256-0595

**December 2-3 2006**, Orangevale, CA American River Gem & Mineral Society Orangevale Grange 5805 Walnut Avenue (near Madison Avenue) Hours: 10 - 5 both days Evelyn Tipton (916) 372-3452 Email [ektip-ton@charter.net](mailto:ektip-ton@charter.net)

## 2007 Shows

**January 20-21 2007**, Exeter, CA Tule Gem & Mineral Society Exeter Veteran's Memorial Bldg. Hwy 65 Hours: Sat. 10 - 5; Sun. 10 - 4 Steve Hayward (559) 734-3843 Email: [smhay734@aol.com](mailto:smhay734@aol.com)

**January 20-28 2007**, Redlands, CA The Mineralogical Society of Southern CA 42nd. Pacific Micromount Conference San Bernardino County Museum 2024 Orange Tree Lane (exit North on California St. from I-10) Hours: Fri. 7 - 10; Sat. 10 - 10; Sun. 9 - 12

**February 16 - 25, 2007**, Indio, CA San Gorgonio Mineral & Gem Society Riverside County Fair & National Date Festival Gem & Mineral Building Bldg #1 46-350 Arabia Street Hours: 10 am - 10 pm Bert Grisham: (915) 849-1674

**February 24 - 25, 2007**, Antioch, CA Antioch Lapidary Club Contra Costa County Fairgrounds Flower Building at West 10th & L Sts. Hours: 10 - 5 both days Ellen Bauer (925) 458-2539

Email: [ebaur\\_lapidary@yahoo.com](mailto:ebaur_lapidary@yahoo.com)

Website: [antiochlapidary.tripod.com](http://antiochlapidary.tripod.com)

**March 2-4 2007**, Hayward, CA Mineral & Gem Society of Castro Valley Centennial Hall 22292 Foothill Blvd. Hours: Fri. & Sat. 10 - 6; Sun. 10 - 5 Larry Ham (510) 887-9007 Email: [info@mgscv.org](mailto:info@mgscv.org)

**March 3-4 2007**, Ventura, CA Ventura Gem & Mineral Society The Ventura Gem Show: Gems; Minerals, Lapidary Arts, & Fossils Seaside Park- Ventura County Fairgrounds, 10 W. Harbor Blvd. Hours: Sat. 10 - 5; Sun. 10 - 4 Ed Clark (805) 983-0028 Email: [clarkoe@adelphia.net](mailto:clarkoe@adelphia.net)

**March 3-4 2007**, Arcadia, CA Monrovia Rockhounds Los Angeles County Arboretum & Botanical Garden 301 N. Baldwin Ave. Hours: 9 - 4:30 both days Jo Anna Ritchey Email: [j.ritchey@verizon.net](mailto:j.ritchey@verizon.net) Website: [www.moroks.com](http://www.moroks.com)

**March 10-11 2007**, Turlock, CA Mother Lode Mineral Society Stanislaus County Fairgrounds Hours: 10 - 5 Bud & Terry McMillin (209) 524-3494 Email: [terry.mcmillin@yahoo.com](mailto:terry.mcmillin@yahoo.com)

**March 23, 24, & 25 2007, Bakersfield, CA** San Joaquin Valley Lapidary Society 5th Annual Rock & Mineral Rendezvous Indoor Show/Outdoor Tail Gate Kern County Fairgrounds Hours: Fri. 9 - 8; Sat. & Sun. 9 - 5 Lewis Helfrich (661) 872-8230 or 323-2663

**April 14-15, 2007**, San Jose, CA Santa Clara Valley Gem and Mineral Society, Santa Clara County Fairgrounds, 344 Tully Rd. San Jose, CA 10-5 both days, Marc Mullaney (408) 691-1584 Club Website: [www.scvgms.org](http://www.scvgms.org) Email: [info@scvgms.org](mailto:info@scvgms.org)

**June 2-3 2007**, Glendora, CA Glendora Gems 859 E. Sierra Madre Hours: Sat. 10 - 5; Sun. 10 - 4 Bonnie Bidwell (626) 963-4638 Email: [YBidwell2@aol.com](mailto:YBidwell2@aol.com)

**June 15-17 2007**, Lancaster, CA Palmdale Gem & Mineral Club Antelope Valley Fairgrounds Hours: 9-5 Daily  
Email: [pgmc@antelecom.net](mailto:pgmc@antelecom.net)

**Do you enjoy mineral displays?  
Are you aware that the Academy of  
Science in San Francisco is planning  
to discontinue that area  
in the museum?  
Would you like to see the  
display continue?**

## Write to:

Academy of Science, c/o Jean DeMouthe, Senior Collections Manager of Invertebrate Zoology and Geology, 875 Howard St., San Francisco, CA 94103

In your letters request that the Academy of Sciences please continue to have a geological and mineralogical displays in their facility. Please express your interest in visiting these displays and the importance of having these displays to educate the public.



## Be Safe - Be Well

By Don Monroe, Chair, AFMS Safety Committee  
Via AFMS Newsletter, 10/2006

### Ride Rockhounds, Ride

At the recent American Federation of Mineralogical Societies annual meeting hosted by the Southeast Federation, our safety committee activities received a lot of positive feedback, and some very good suggestions for future safety articles were shared. Many of the comments dealt with travel issues and some of them were so good that I offer the following for your consideration.

A couple of people cited situations involving the tires on large trucks. If you are alongside or directly behind the vehicle when a tire ruptures, the force of the explosion can damage your vehicle or cause you to lose control. The large rubber tire cap, which you may encounter on the road, is often referred to as an "alligator" and can be a real road hazard if you are unable to avoid contact and run over it.

When do you get out of your vehicle? We have been told that staying in the vehicle is the better course of action during an electrical storm. We are also encouraged to leave our vehicle and take refuge in a ditch or sturdy structure when a tornado is sighted or deemed imminent. If we suffer auto damage or a flat tire, we are encouraged to leave the vehicle and get behind a guard-rail or in some other safe area. Many victims are hurt or killed by other vehicles passing near. I well remember stopping in the middle of a city street to retrieve a ball for some kids and only realized the danger when a passing car brushed my coat. I know---stupid move.

Do you tow a trailer or other vehicle? It has taken me a while to believe that just a little bit of excess speed can result in a totally unstable rig. We often see trailers that sway to the point that we are really hesitant to pass them which means that we are seeing either excess speed or a poorly loaded trailer.

Are there actions we can take to improve our odds? I definitely think so and I will share a couple of my favorites.

- First, prepare for your trip with good maps, a GPS if you know how to use it, and one of the Exit Guide books. The books can be really helpful if you drive a diesel vehicle. There are some parts of the country where fuel can be hard to find.

- Select a vehicle that really suits your intended purpose. I always feel safer in large, heavier vehicles. I know it may use a bit more fuel but can give you the edge when you have a confrontation with another vehicle or a large animal.

- I often read articles in magazines and newspapers that recommend a refresher driver course for us older drivers. I have not done that yet, but I plan to in the near future.

## Nominations for the 2007 SCVGMS Board

By the Nominating Committee  
Marc Mullaney, Ruth Bailey, and June Harris

President: Randy Harris

Vice President: Marc Mullaney

Secretary: Open

Treasurer: Frank Mullaney

Editor: June Harris

Federation Director: Ruth Bailey

Alternate Federation Director (choose one)

1. Frank Monez

2. Gail Matthews

Board of Directors:

John Eichhorn (Immediate past Pres. – automatic confirmation to board of directors position)

Choose four from below list for Board:

1. Dean Welder

2. Matt Wood

3. Jim Ziegler

4. Vito Cangemi

5. Larry Moore

6. Rick Kennedy

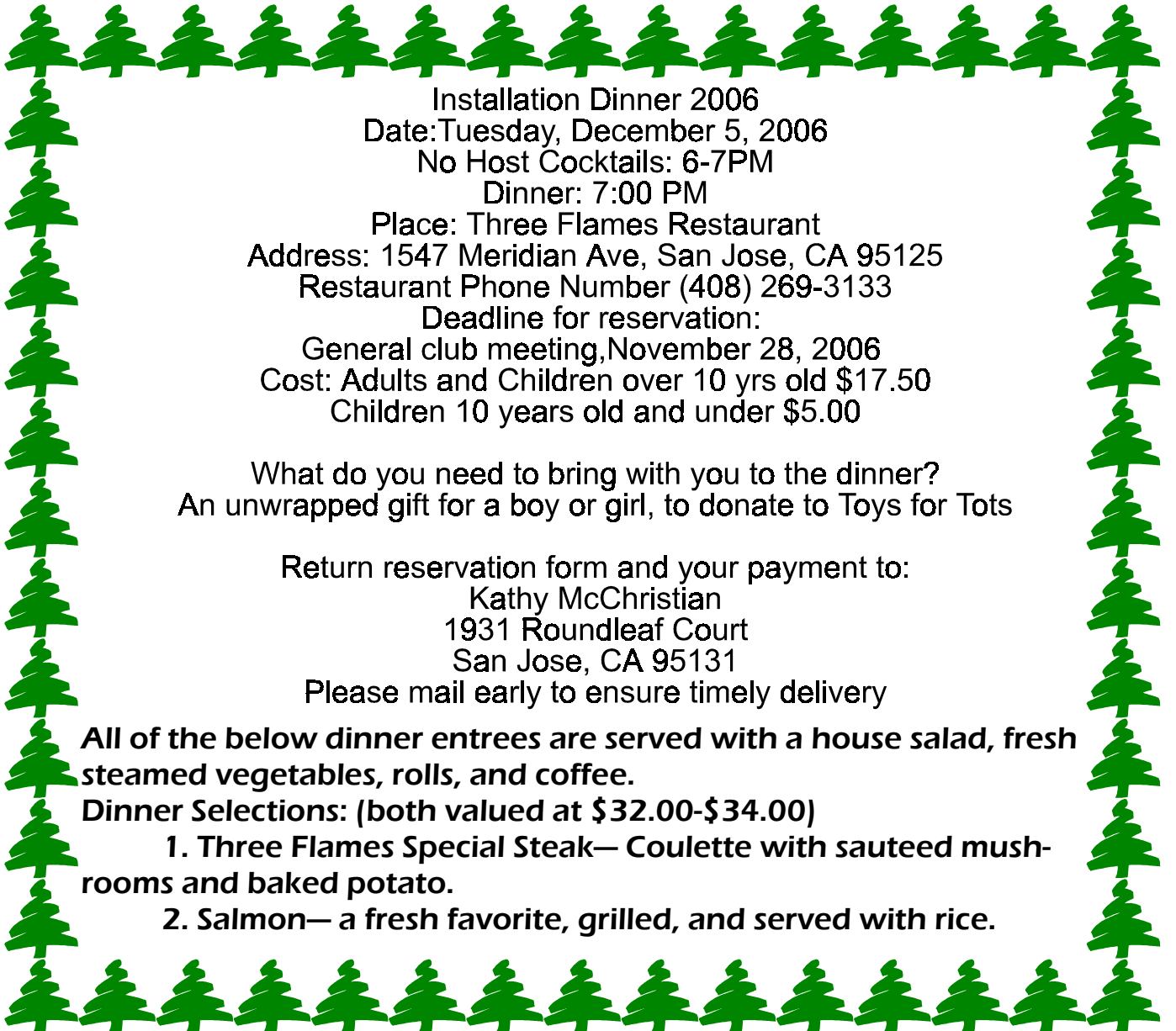
---

### Donation Receiving Committee Report By George and Jane Yamashita

The DRC is moving right along. We have had three successful rock sales, and our next one will be on November 11th from 9-noon at Pat Speece's home. The rocks and slabs will be on sale for 25 cents a pound. This will be the last sale until Spring. We still have some very nice slabs and rocks left. Many of the larger rocks would be great in your gardens and lining walkways. There will be a "free" table full of rocks. After this sale, all rocks and tables will be disposed of or will be put away.

We will be bringing some rocks to our General Meetings for our Secret Auction and door prizes. To enter the door prize drawing, sign in at the hospitality table and put your name on a ticket. The drawing will be after the program. To enter the Secret Auction, write your bid on a bid slip and place in the Secret Auction can. The Secret Auction winners will be announced after the program, too.

We still need one more table for our rock sales. If anyone has a table that they would like to donate to the DRC, please call George Yamashita. Thanks for helping to make the DRC a success.



Installation Dinner 2006  
Date: Tuesday, December 5, 2006  
No Host Cocktails: 6-7PM  
Dinner: 7:00 PM

Place: Three Flames Restaurant  
Address: 1547 Meridian Ave, San Jose, CA 95125  
Restaurant Phone Number (408) 269-3133

Deadline for reservation:  
General club meeting, November 28, 2006  
Cost: Adults and Children over 10 yrs old \$17.50  
Children 10 years old and under \$5.00

What do you need to bring with you to the dinner?  
An unwrapped gift for a boy or girl, to donate to Toys for Tots

Return reservation form and your payment to:  
Kathy McChristian  
1931 Roundleaf Court  
San Jose, CA 95131

Please mail early to ensure timely delivery

All of the below dinner entrees are served with a house salad, fresh steamed vegetables, rolls, and coffee.

Dinner Selections: (both valued at \$32.00-\$34.00)

1. Three Flames Special Steak— Coulette with sauteed mushrooms and baked potato.
2. Salmon— a fresh favorite, grilled, and served with rice.

## Reservation Form for Installation Dinner

Name: \_\_\_\_\_ Phone #: \_\_\_\_\_

Number of Adults and children over 10 years old: \_\_\_\_ X \$17.50 = \_\_\_\_\_

Number of Children (10 years old and under) \_\_\_\_\_ X \$5.00= \_\_\_\_\_

Total Owed \_\_\_\_\_

Please make checks payable to: Santa Clara Valley Gem and Mineral Society

Meal Selections below:

\_\_\_\_ Adult Meal #1 Three Flames Special Steak Dinner \$17.50 each meal

\_\_\_\_ Adult Meal #2 Salmon Dinner \$17.50 each meal

\_\_\_\_ Child's Meal only for children 10 years old and younger \$5.00 each

Mail this form and your payment to:

Kathy McChristian, 1931 Roundleaf Court, San Jose, CA 95131

Questions: Call Kathy (408) 258-8400

## **The Federations**

By Dick Pankey, Federation Director  
Via Diablo Diggin's, April 2006

**What is CFMS? AFMS? How many federations are there and where are they? Why are they? And what do they do?**

### **The California Federation of Mineralogical Societies, Inc.**

This includes all of California, Nevada, and Hawaii, and some societies in Arizona. The purpose of the Federation is to do together what we cannot do in small groups. The clubs and members are the Federation its progress depends upon their efforts and mutual assistance. The Board of Directors, the Executive Committee and numerous committees administer the business and projects of the Federation. The Board of Directors consists of one Federation Director from each member Society, selected by the membership at the local level, the President, two Vice Presidents, the Secretary, and the Treasurer.

The Board of Directors meets twice a year, the fall meeting in November of each year, and Convention meeting, held in conjunction with the Federation Show. The Board conducts the regular business of the Federation, such as the election of officers and the designation of the Host Society for any subsequent show and convention. And the Executive Committee conducts the necessary business of the federation between the Board of Directors meetings. Actions taken by the Executive Committee are subject to the approval of the Board of Directors at the next regular meeting. This committee meets on call of the President.

The progress of the Federation is assured through the service and assistance of many committees. The Chairmen and committee members are appointed by the President with the approval of the Executive Committee. These committee people are a very important part of the Federation. They are dedicated members working diligently on Projects and administration of the federation and the results of their work measure the progress and accomplishments of the Federation.

An Executive Secretary/ Treasurer is employed to maintain a headquarters and handle the day to day business of the federation. This person or persons is under the direct supervision of the Executive Committee.

The voice of the federation is the newsletter, which is published each month, except the month following the convention. Each society receives three

Copies and it is available on the CFMS web page—[www.cfmsinc.org](http://www.cfmsinc.org).

### **The American Federation of Mineralogical Societies, Inc.**

Interest in the earth sciences and lapidary arts rested with organized groups such as the New York Mineralogical Society in 1886 and Philadelphia Mineralogical Society in 1892. Members of these pioneering organizations went on field trips and collected rocks and minerals avidly. They shared in their extensive reports of their finds their love of beauty and knowledge. The clubs began to join together. Groups in California joined together in 1935 to form California Federation of Mineralogical Societies. This was followed by the Northwest Federation in 1938; the Midwest Federation in 1940; and the Rocky Mountain Federation in 1941.

As more and more individuals learned about cutting precious and semi-precious stones or collecting minerals and fossils, it became obvious that a national group would benefit all. As early as 1938 there was a meeting between the Northwest Federation and the California Federation.

World War II necessitated putting any further organizational efforts on hold and it was not until 1946 at the Northwest Federation Convention in Boise Idaho (1946) a suggestion was made to hold a combined convention. The four existing Federations to met at the Rocky Mountain Federation Convention in Salt Lake City, Utah, in 1947. The Midwest Federation, the Rocky Mountain Federation and the California Federation formed the American Federation of Mineralogical Societies. With officers elected and committees formed to write a constitution and By-laws, they selected Denver, Colorado, as the site for the first "national" convention, to be held in June 1948. The Denver show proved to be a success. Excellent displays and an interesting array of lectures helped insure the future of the fledgling Federation. California was chosen as the site for the 1949 convention with the "Forty-Niner Centennial" held in Sacramento. The Eastern Federation joined AFMS in 1950 (just after it was formed) and the South Central (formerly Texas Regional Federation and a part of the Rocky Mountain Federation) joined in 1954. The last group to be admitted to AFMS was the Southeast Federation in 1993.

### **The Eastern Federation of Mineralogical and Lapidary Societies, Inc.**

Was organized in 1950 and joined the AFMS in 1952. In encompasses the North Eastern region of

the United States and has over 150 different clubs and over 10,000 members. It includes these states: Connecticut, Delaware, District of Columbia, Kentucky, Maine, Maryland, Massachusetts, New Hampshire, New Jersey, New York, Pennsylvania, Rhode Island, Vermont, Virginia, and West Virginia.

#### **The Midwest Federation of Mineralogical and Geological Societies.**

Was organized in 1940, and one of the original four founders of the AFMS in 1947. It encompasses a region of 11 states and has about 150 different clubs from Illinois, Indiana, Iowa, Michigan, Minnesota, Missouri, Nebraska (eastern portion of state), North Dakota, (eastern portion of state), Ohio, South Dakota (eastern portion of state), and Wisconsin.

#### **The South Central Federation of Mineralogical Societies, Inc.**

Was organized in 1943 and joined the AFMS in 1953. It has 40 different clubs within its region, in Arkansas, Louisiana, and Texas.

#### **The Rocky Mountain Federation of Mineralogical Societies, Inc.**

Was organized in 1941, and one of the original four founders of the AFMS in 1947. The RMFMS includes clubs from Arizona, Colorado, Kansas, Nebraska (western portion of state), New Mexico, North Dakota (western portion of state), Oklahoma, South Dakota (western portion of state), Utah, and Wyoming.

#### **The Northwestern Federation of Mineralogical Societies.**

This includes clubs in Alaska, Idaho, Montana, Oregon, Washington, and Utah.

#### **The Southeast Federation of Mineralogical Societies, Inc.**

Was organized in 1976 and joined the AFMS in 1993. It encompasses a region of 7 states and has over 80 different clubs in Alabama, Florida, Georgia, Mississippi, North Carolina, South Carolina, and Tennessee.

(The information on AFMS and the 6 other Federation was adapted from articles in the December 2005 and January 2006 issues of the Petrograph.)

## **PLAC Report**

By Frank Monez

The Bay Area Mineralogists had a group of BLM employees give a presentation of current activities taking place in the Clear Creek area. Brian White, Project Coordinator for the Clear Creek Management Area, and members of his staff, gave a rundown of the actions being instituted in the Clear Creek area.

Major concern to visitors is the possible restriction of access to areas of interest to the various groups of visitors. Restrictive rules primarily affect motorized vehicles. Visitors can walk and bicycle almost anywhere. Environmental and endangered species controls will have to be observed by all visitors. There are no restrictions being applied to casual mineral collecting.

Mr. White indicated that the Field Manager can authorize special group permits, with limited durations. The Outdoor Recreation Planner is presently working on developing clean-up groups, and other groups to aid in maintenance activities. Volunteer activities can aid the limited budget of BLM.

A fee plan is presently in the "works", and is expected to be put in place in the Fall of 2007. When in place, the funds will be used to provide more and better access and improve various areas for recreation. Restoration is currently in progress for four sites.

The summation at the end of the meeting referenced the need for users of our public lands to continually write our congressional representatives, keeping them aware of our interests and many uses of our government lands.

## **Donation Receiving Committee Offers Meeting Attendance Incentives.**

By Pat Speece

### **October Secret Auction Winners**

The winners of the Secret Auction were Marc Mullaney (3 items) and Pat Speece (1 item). We plan on having Secret Auctions at each of our general meetings.

### **October Door Prize Winners**

The winners of the Door Prizes were Montella Lopez, Jennifer Le, and a mystery person. The Donation Receiving Committee plans to offer door prizes at all our monthly general meetings.

**Come to the next meeting; you might get something, too.**

# What? No More Shelf Space? A Collector's Challenge

By Charleton E. McMackin

Reprinted from Lapidary Journal, February 1976; via The Badger Diggin's, March 2006

When a casual interest in gems and minerals becomes the raging fever known as the "rock hobby," the victim is in need of sound advice. He should be reminded that he can not collect everything. He needs to know that if he is to pick up and take home every rock or mineral that strikes his fancy, he will soon need a house as large as the British Museum and a backyard as spacious as a football field.

But such is the enthusiasm of the beginner, that he will not heed such advice, not even the suggestion that he confine his collecting to one type of material. That is, he will not heed at first. Later on, however, he will suddenly realize that he has no more wall space for shelves on which to display his specimens.

At this point he will say to himself, "Every one of my specimens is a treasure. How can I part with any one of them? Each and every one has a meaning, a special meaning. Each says something to me because of the very special place in which I found it: an Oregon beach, a California desert, a Wisconsin gravel pit, or a New Hampshire pegmatite. Or perhaps it was the gift of a dear friend, or perhaps I acquired it in a particularly beneficial swapping deal. How can I bear to part with it?"

You are bound to reach this stage in your collecting career; and although your decision is apt to be heart-rending, you will eventually be forced to make it. Your specimens are probably of cabinet-size. You chose that size so that the color and pattern in certain of them would show to best advantage. Or, again, perhaps some of your treasures are beautiful but fragile crystals. You could not break them up into smaller piece without destroying them.

So your problem, as you ponder it, comes down to this: You do not wish to part with your specimens, yet you have no more wall space for more of the same size. Here are some alternatives:

1. You can rent a big warehouse and put up shelves. This would allow you to expand your collection for a good many years. But there are disadvantages. We will take these up later.

2. You can fill up your entire house and backyard with your cabinet-sized specimens.

3. You can collect only "thumbnails"; specimens that can be contained within a one-inch cube.

4. You can collect micromounts.

You can of course, continue to collect cabinet-size specimens, but before you know it, they will have taken over your home, occupying not only the living room wall space, but also all of the wall space in every other room in the house. At this point your spouse is likely to decide that you consider your life's partner non-essential, and someday you may find a note on the kitchen table

that reads: "Life with you has become too rocky. Have gone to live with Mother."

Think of how this misfortune would affect you. You would be left with the job of dusting all of your rock treasures, cleaning house, cooking meals, washing dishes, doing laundry, as well as making the bed. How much time would this leave you for rock, gem, and mineral hunting? Obviously you can not allow things to reach this point.

As for collecting thumbnails, the advantage here would be that you could store thousands of them in the amount of space now devoted to a hundred or so of your cabinet-size. And since you would keep the thumbnails in little cube-shaped plastic boxes, there would be no dusting problem. But if you are the enthusiast I suspect you are, your objections to this method are obvious.

In the first place, a major source of your joy is not derived merely from collecting and hoarding. You have an appreciation of beauty. You want to be able to gaze at your specimens and enjoy their color, pattern, and form. How can you do this if you limit what you collect to tiny bits of rock which you immediately salt down in a drawer, like so much dried codfish?

Since this rules out thumbnails, you have but one choice left, micromounts. You will perceive that there is a superficial similarity between this type of collecting and the one we have just finished discussing. But in reality, they are vastly different. It is true that micromounts, like thumbnails, are also stored in little cubical plastic boxes in shallow drawers. But the principal difference lies in the fact that a micromount specimen is one that is carefully selected for its perfection of form, or for the whole new world that it will reveal when looked at under a microscope.

The specimen is usually mounted on a small pedestal of cork or other material inside the box. Crystal specimens lend themselves particularly to the fantastic world of the microscope. Sometimes a collector, when studying an unbelievably beautiful specimen under such magnification, is at least partially able to grasp the concept of infinity.

Although a microscope is rather expensive, you may conclude, in the long run, that it has been worth it. By collecting micromounts, as with thumbnails, you will save storage space. But with the micros, you will have the desire to take some out frequently to study and enjoy them. All you will need besides the microscope is the shallow-drawer cabinet.

Now here comes the bonus. You can still keep and enjoy your collection of cabinet-size specimens that so adequately grace your shelves. Yet by collecting micromounts you will add a new dimension to your collecting and discover an entirely new world that is beautiful beyond belief. Many collectors have recently discovered this new world. Why not join them in exploring it?

**SANTA CLARA VALLEY GEM & MINERAL SOCIETY**  
**Member Display Case Application**  
**Annual Show - April 14 & 15, 2006**

**NAME:** \_\_\_\_\_

**ADDRESS:** \_\_\_\_\_

**TELEPHONE:** \_\_\_\_\_

**I WILL FURNISH MY OWN CASE:** \_\_\_\_\_ **I WILL NEED A CASE:** \_\_\_\_\_

**DESCRIPTION OF EXHIBIT:** \_\_\_\_\_

**SPECIAL REQUESTS (space, lighting, etc.):** \_\_\_\_\_

**COMPETITIVE CASE:** \_\_\_\_\_ **NON-COMPETITIVE CASE:** \_\_\_\_\_

**COMPETITIVE CASE INFORMATION**  
**(Case to be judged by AFMS Uniform Rules)**

**Sub-Division:** \_\_\_\_\_ **Class:** \_\_\_\_\_

**Entry Level: Master** \_\_\_\_\_ **Advanced** \_\_\_\_\_ **Novice** \_\_\_\_\_

**Junior** \_\_\_\_\_ **Society** \_\_\_\_\_

**COMPETITIVE ITEM ENTRY FORM**

**Group:** \_\_\_\_\_ **Item:** \_\_\_\_\_

**Return this application on or before March 20, 2007 to:**

**Member Display Chairman**  
**Bill Gissler**  
**1075 Blossom Dr.**  
**Santa Clara, CA 95050**

**Santa Clara Valley Gem and Mineral Society  
General Meeting Minutes  
October 24, 2006**

President John Eichhorn called the meeting to order at 7:45 PM at the Belwood Cabana Club in Los Gatos. Members and guests were welcomed. A moment of silence was observed in memory of Jim Robertson. Minutes were approved as printed in the Breccia. The Board meeting will be at Ruth Bailey's home on Thursday, October 26 at 7:30 PM.

**Correspondence:** We received notice of a rock sale in Westminster, CA., a Dodge & Cox report, a bill from McDaniel Insurance Services, Field trip information from the Co-op, a list of equipment for sale in Yuba City, and fliers for the Santa Rosa show.

**New Members:** There were no new members present.

**Hospitality:** There were 49 members and 1 guest in attendance tonight.

**Sunshine:** Jim Robertson died of cancer. Frank Mullaney's father passed away and Charles Spencer's mother passed away. Eva Surrell is getting around a little better after her latest treatment.

**Study Groups:** See details in the Breccia.

**PLAC:** See details in the Breccia.

**Field Trips:** Marc Mullaney gave a report on the trip to Clear Creek last weekend. See details in the Breccia.

**Federation Report:** Ruth Bailey reported Zyzyx applications are online.

**2007 Show:** Marc Mullaney gave a report on the 2007 show. See details in the Breccia.

**Installation Dinner:** See details in the Breccia.

**Donation Receiving Committee (DRC):** There is a rock sale November 11th at Pat Speece's home from 9AM to 12PM. Rocks will be 25 cents per pound.

**Demo Day:** The study groups will have a Demonstration Day on November 11 at the Cabana Club. Hours are from 10:00 AM to 3:00 PM.

**Bylaw Change:** The proposed change to the Editor section of the Bylaws was read. The change will allow the Editor to produce 10 newsletters each year instead of the current 12. This will be voted on at the next meeting in November.

**Nominating Committee:** The nominating committee gave a report on who is running for office for next year. See details in the Breccia.

**Member Displays:** See details in the Breccia.

**Program:** Rick Kennedy gave a brief report on the Benitoite Gem Mine. A video was shown about the Ginkgo Petrified Forest in Washington State. See details in the Breccia.

Meeting was adjourned at 9:15 PM.

Everyone enjoyed a very nice potluck dinner before the meeting.

Respectfully submitted,

Randy Harris, Secretary

---

**Santa Clara Valley Gem and Mineral Society  
Board Meeting Minutes  
October 26, 2006**

President John Eichhorn called the meeting to order at 7:30 PM at the home of Ruth Bailey. All board members were present except Larry Moore, Frank Monez, and Lynn Toschi. Also present were Montella Lopez and Anne Marie Mullaney. Parliamentarian position remains vacant. M/ S/ P to approve the minutes of the September 28, 2006 meeting as read.

**Treasurer's Report:** M/ S/ P to pay the bills. Frank Mullaney is looking for paperwork for the Dodge & Cox account.

**New Members:** M/ S/ P to accept Michael Avilucea for membership.

**Communications:** None.

**Field Trips:** We will be hosting the NBFT meeting in March. M/ S/ P to authorize reserving the Cabana Club for the meeting. M/ S/ P to explore the possibility of placing a permanent display case at the BLM office in Hollister.

**Show Report:** Marc Mullaney reported on the 2007 show. The next show meeting will be November 9<sup>th</sup> at Ruth Bailey's home. See details in the Breccia.

**Sunshine:** M/ S/ P to donate \$25 to the CFMS Endowment Fund in memory of Jim Robertson.  
**Installation Dinner:** There was discussion of where to hold the Installation Dinner next year. There were several restaurants mentioned. Kathy McChristian has indicated that she will not be in charge of the installation dinner after this year.  
**DRC:** There will be a rock sale at Pat Speece's home on November 11<sup>th</sup>. The Secret Auction raised \$53 at the regular meeting.  
**New Business:** There was discussion about a movie screen for programs. We need a new sign-in book for the regular meetings.  
**Future Rockhounds:** M/ S/ P to reserve the Cabana Club for the Future Rockhounds to have a meeting in early December.  
M/ S/ P to continue with the social events on meeting nights. M/ S/ P to continue hosting the Demonstration Days each quarter. Marc Mullaney is thinking about starting up a Jewelers study group. M/ S/ P to start up the Jewelers study group for at least six months. The group will charge \$2 per person per meeting to help defray the cost of renting the Cabana Club. There was discussion about the other study groups.  
M/ S/ P to adjourn at 9:15 PM.  
Lynn Toschi sent delicious refreshments that were enjoyed by all.

Respectfully submitted,

Randy Harris

**Santa Clara Valley Gem and Mineral Society  
October 25, 2006  
Treasurer's report**

Beginning Balance:		\$18,061.75
Receipts		
Rock Sale	\$620.75	
2007 Dealer Show Fees	<u>\$570.00</u>	
Total Receipts	\$1,190.75	
Disbursements		
Dues Refund	\$ 23.00	
Breccia Postage	\$100.00	
McDaniel Insurance	\$250.00	
Donation Receiving Committee Expense	\$125.03	
Sept. and Oct. Program Expense	\$ 15.00	
Copies for the October Program	\$ 11.37	
Dealer Return Packets postage	\$ 78.27	
Expression/ October Breccia	\$ 41.57	
County Tax Collector	<u>\$119.77</u>	
Total Disbursements	\$764.01	
Ending Balance:		\$18,488.49