

Santa Clara Valley Gem and Mineral Society

Send Exchange Bulletins to:

June Harris

107 Dell Way

Scotts Valley, CA 95066



Please Deliver Promptly

# BRECCIA

Santa Clara Valley  
Gem and Mineral Society



All American Club

Volume 53  
Number 10

San Jose, CA  
October 2006

## SCVGMS ELECTED OFFICERS

President: John Eichhorn  
(408) 749-0523  
Vice President: Marc Mullaney  
(408) 691-1584  
Secretary: Randy Harris  
(831) 438-5150  
Treasurer: Frank Mullaney  
(408) 266-1791  
Editor: June Harris  
(831) 438-5150  
Federation Director: Ruth Bailey  
(408) 248-6195  
Alternate Fed. Director: Frank Monez  
(408) 578-7067  
Directors:  
Bill Gissler (408) 241-0477  
Larry Moore (650) 941-4966  
Pat Speece (408) 266-4327  
Lynn Toschi (408) 353-3323  
Jane Yamashita (408) 353-2982  
Historian: Anna Windsor  
(408) 926-8624  
Parliamentarian: OPEN

## SCVGMS COMMITTEE HEADS

Donation Receiving Committee Chairman:  
George Yamashita  
Field Trip Committee Coordinator:  
Adam Yamashita  
Field Trip Committee: John Eichhorn,  
Randy and June Harris, Jennifer  
House  
Founder's Day Picnic Food:  
June and Randy Harris,  
Jane and George Yamashita  
Founder's Day Picnic Raffle: Pat Speece  
Founder's Day Bingo: John Eichhorn  
Hospitality: Rich and Niki Santone  
Installation Dinner: Kathy McChristian  
Juniors: Mark and Debbie Wartenberg,  
Gary and Kathy McChristian  
Librarians: June Warne and Nancy Boring  
Member Display: Kelly Van Vleck  
PLAC: (Public Lands Advisory Committee)  
Frank Monez  
Program: Bill Gissler  
Refreshments: Claire Ferguson  
Sergeant-at-arms: Hershall Boring  
Show 2007: Marc Mullaney  
Silent Auction: John and Sylvia Palmieri  
Social Committee:  
June Harris, Claire Ferguson  
Sunshine: Ernestine Smith  
Trailer Custodian: Herb Vogel  
Trophies: Frank Mullaney  
Webmaster: RK Owen

# Santa Clara Valley Gem and Mineral Society

P.O. Box 54, San Jose, CA 95103-0054

Website: [www.scvgms.org](http://www.scvgms.org)

Email: [info@scvgms.org](mailto:info@scvgms.org)

Phone Number (408) 265-1422

## An Invitation

This society is pleased to invite guests to attend general meetings, study groups, and field trips. General meetings are normally held the fourth Tuesday of every month at 7:45 PM at 100 Belwood Gateway (The Cabana Club), Los Gatos, CA 95032. Belwood Gateway is just south of Blossom Hill Road between Leigh Avenue and Harwood Road.

**Our next general meeting will be on October 24, 2006 at the Cabana Club, 100 Belwood Gateway, Los Gatos, CA 95032 at 7:45 PM.**

**Our next board meeting will be on October 26, 2006, hosted by Lynn Toschi, at Ruth Bailey's home, 2857 Addison Place, Santa Clara, CA 95051, (408) 248-6195, at 7:30 PM.**

Our Society's Purpose: The inculcation of a love of rocks and minerals by the furtherance of members' interests in the earth sciences and by education in all facets of related educational activities with the promotion of good fellowship, proper ethics, and conduct.

Our Membership Requirements: Attendance at two general meetings within twelve months. This society is a member of the California Federation of Mineralogical Societies (CFMS) and is affiliated with the American Federation of Mineralogical Societies (AFMS). Dues are \$10.00 per year.

Our Newsletter, the Breccia, is published monthly. The deadline for most articles is the Sunday before the regular meeting. The Breccia Editor is June Harris, who may be contacted via email at [juneconeyharris@yahoo.com](mailto:juneconeyharris@yahoo.com) or by phone at (831) 438-5150. The Breccia is proofread by Linda Spencer. Ruth Bailey and Bill Norton handle all aspects of mailing. Exchange Bulletins may be sent to June Harris at the following address: 107 Dell Way, Scotts Valley, CA 95066. Permission to copy is freely granted to American Federation of Mineralogical Societies (AFMS) affiliated clubs when proper credit is given.

## Study Group Leaders

For information on a study group, please call the leader(s) listed below

Cutaways	John Eichhorn	(408) 749-0523
Facet Cutters	Bill Norton	(408) 356-8254
Fossileers	Gail Mathews	(650) 962-9960
Juniors	Mark Wartenberg	(650) 568-6114
Mineraleers	Chuck Boblenz	(408) 734-2473
Smithies	Kelly Van Vleck & Pat Speece	(408) 262-8187 (408) 266-4327
Stringers	Pat Speece	(408) 266-4327

# John's Note

October is the month when our nomination committee will be asking members to take a job in the following year. This club can only function when its members are willing to be involved. Please accept a position when you are called upon.

We could always use more help with the set up before the meetings. This involves showing up around 7 o'clock to help put up the tables, lamps, and chairs; also help with tear down and closing up of the building after the meeting.

The next meeting's program is on the Ginkgo Forest and the Great Flood along the Columbia River Gorge. To make the program more interesting, please bring to share any petrified wood from the Northwestern United States that you may have.

I am a new Grandpa. Josh and Sarah are proud new parents of a healthy baby boy, Deaglan, at 4 pounds 10 ounces. We have another rock collector. This is one way to add members!

**Come one, Come all!  
Study Group Demo Day  
November 11 from 10AM -3PM  
at the Cabana Club.  
Call Marc Mullaney for  
more info (408) 971-6651  
or email him at  
geologistm@aol.com**

## Silent Auction at November Meeting

It's October already, and before you know it, November is here with the Silent Auction. Mark your calendars — fourth Tuesday in November. We'll have 6 tables to fill with your donated goodies. Start collecting now for a fun night in November. Questions?? Call John Palmieri (408) 272-2369

# June Jabberings

Did you know that people in our club are always interested in something new you learned? Do you have an unusual skill or talent with rock? Have you read an interesting article or visited an interesting Internet rock or mineral site? Did you take a vacation this past year? Did you visit an interesting museum? Maybe you went on an interesting field trip? Or maybe you tried your hand at a new lapidary art or took a class that really improved your skill in a lapidary art. All of these areas would make a great article for your newsletter. Remember if you are interested in it, there are probably many others who would be interested as well.

If you are afraid that you can't write an article, don't be. I'll help you. If you find an article that is interesting, email it to me or mail it to me. Either way, I'm always looking for new articles. Please include where you found the article, ie. Website, magazine, newspaper, newsletter, etc. I also need to be able to cite the source of the article; if it's printed, include the author & date printed.

This is your newsletter. Let's work to have articles printed in it that reflect your interests. Unfortunately, I don't read minds, so help me make it more interesting for you.

Thanks, June

Potluck before the  
October club meeting  
Dinner to be served at 6:30  
Meeting at 7:45  
Program on the Ginkgo Forest  
and the Columbia Gorge  
Bring a main dish, salad,  
or dessert.  
Club will provide table service  
and drinks.

# Check out what our study groups are doing!!!

## MINERALEERS BY CHUCK BOBLENZ



The Mineraleers met on Sept. 11 at the Boblenz residence with eleven attendees. This turnout is the highest number to attend in several years. The discussion topic was mercury, cinnabar and myrickite. Three members shared their specimens with the group: Gilroy Hot Springs agate with cinnabar, cinnabar in quartz, cinnabar on quartz and myrickite. Much discussion took place about the specimens as they were being passed around.

The next meeting will be held October 16, and the topic will be copper and its family. It will be at 7:30 PM at the Boblenz residence.

The meeting adjourned shortly after 9 PM for further discussions and delicious refreshments served by Jeri.

## Fossileers By Gail Matthews



On September 23, a group of 8 Fossileers experienced the wonderful hospitality of Karen and her family during a 3 hour fossil hunting expedition on their east San Jose foothills property. The trip began with a viewing of Karen's fossil treasures she had collected from the family property over the years and had supplemented with specimens she had purchased. Her stories about her treasures and the property history were both educational and amusing.

Of Karen's perfect local finds, the most spectacular was a complete sanddollar, *Astrodapsis brewerianus*, which is the primary and best of 7 fossil forms used as markers for the Briones Formation (Fm). She showed us the medium sized dome-shaped bivalve, *Pecten ricei*, also a fossil form Briones Fm marker, clearly chosen because it is abundant and easy to spot. And since we were most likely to find only pieces, she displayed a complete oyster shell, *Ostrea bourgeoisi*, which is common at several bay area localities. Then the day got even better as we proceeded on our own fossil hunt, searching under the chicken coup, along side the driveway and through the apricot orchard.

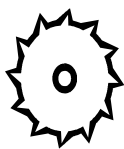
Everyone was delighted with their individual finds, which were basically in pretty fair preservation considering the locality. Most fossils from the Briones Fm are casts and molds and represent a near shore environment with abundant fragments of shells, gastropods and mollusks cemented together. The Briones Fm was originally described by Parker Davies Trask in the 1920s. The type locality, an area chosen for the best exposure of characteristics and usually then given the area's name, is the Briones Valley in Contra Costa County. The formation consists of siltstones, sandstones and conglomerates of upper-Miocene age and is limited to a relatively small area, suggesting it is the remains of a shallow bay. From my initial research, the more specific upper-Miocene age seemed to be around 13-15 million years old, but another, newer reference has indicated 7-9 million years, which I believe is a better fit within the stratigraphy and fossil types. Our hunt successfully produced 1 arthropod, the barnacle *Balanus concavus*, and several mollusks in 2 different classes. In the Class Pelecypoda (Bivalves), at least 8 different species were found. I uncovered a supersized version of *Pecten ricei*, the large bivalve *Pecten vickeryi*, which is a rarely found shell only from the Briones Fm and its fragility will require quite a bit of repair work. At least 4 different snail shells from the Class Gastropoda (Snails) were found. Randy was lucky to have one of the best gastropod finds, *Sinum trigenerium*, sneak into his pocket. Several people captured the limpet-like, conical snail shell *Calyptrea filosa*. And John found the largest fragment of *Ostrea bourgeoisi*, at about 7 inches long. All were and are thankful for this great opportunity to explore, learn and add to our fossil collections.



## Smithing by Kelly Van Vleck and Pat Speece

The Smithies mandatory pre-meeting for the Intermediate Class will be held on Oct 2 at 7PM at Pat Speece's house. Mandatory means you must be there for the meeting or you will not be in the class.

The class dates are: Oct 10 & 11, 16 & 17, 23 & 25, 30 and Nov 1. We're looking forward to a great class. All of those who are scheduled for the class know who they are and are cautioned again to make sure and be there for the pre-meeting.



## Cutaways

No meeting this month for the Cutaways. If anyone has ideas for a group meeting place, please contact John Eichhorn, (408) 749-0523.

## Faceters



No meeting for the Faceters this month. Plans are being made for a November meeting. If you have an interest in joining the Faceters, contact Bill Norton, (408) 356-8254.

## Member Displays By Kelly Van Vleck

Marc Mullaney shared beaded bracelets and necklaces and a beautiful silver necklace made of circles of sterling silver he has made. Marc also displayed a number of very flashy opals which have been donated to the club. He would like some volunteers to help cut these opals or give advice on cutting them to make jewelry for the Lucky Dip booth at our annual show.

Marsha Owen is trying to start the AFMS Merit Badge program for the 'Juniors' and for adults. She would like for people to sign up to participate in the program or to be a mentor for the program. The program offers members the opportunity to learn more about various areas of our rock hobby.

Anne and Jesus Ruiz displayed some beautiful rings, bracelets, and other items they made at Camp Paradise recently. The wire wrapping they did is really beautiful.

Ruth Bailey shared with us three sterling silver pendants she made in the silversmithing class at Camp Paradise, one of a beautiful Victoria Stone, another of Red Horn Coral, and one of Moss Agate.

Montella Lopez was very happy with the Egyptian Cat she had carved out of soapstone while at Camp Paradise... very nice Montella!

The 'Stringers Group' displayed an array of exquisitely designed beaded bracelets of many different kinds and colors of beads. The creations were from many different members of the 'Stringers Group'.

Ernestine Smith shared with us four different special items which were made for her by her teachers. The items were very well done pieces of wire wrapping. Ernestine also brought in a box of Iris tubers to share with all the flower lovers in our club. She said she hopes they all bloom beautifully.

Lynn Toschi displayed some opal he was fortunate enough to dig at the Bonanza Mine recently. The opal flashed every color of the rainbow and drew lots of envious stares.

Sieg and Rosmarie Vogel had a very nice display of minerals they have collected. Sieg said they had started out with 'thumbnail' specimens. However, they found some larger pieces they liked so well, they decided to go with larger pieces. They have a number of specimens with which they need identification help.

Gail Matthews showed us a nice collection of fossils from the Briones Formation; the collection included bi-valves, scallops, snails, gastropods, and other fossilized critters.

Eileen and Ed Ferner spent at week a Camp Paradise along with others from our club. They both tried their hand at silversmithing and capping. They also did some wire wrapping, and Ed turned out a beautiful sterling silver chain made of circles of silver.

Jennifer Olsen House shared with us the many different pieces she had collected from her recent North Bay field trip to the Carson Hill Mine and others from the Black Rock Desert trip.

## SUNSHINE BY ERNESTINE SMITH



Congratulations!!! John Eichhorn is a grandpa. His daughter, Sarah, and son-in-law, Josh, are the proud parents of Deaglan Anaya Salado, born September 22, 2006, and weighed 4 lbs and 10 oz.

If you have information concerning any member who is ill, hospitalized, or has had a death in the family, please contact our sunshine person, Ernestine Smith, (408) 395-5035.

## Upcoming October Program

The October 24 program will be about the Ginkgo Petrified Forest near Vantage, Washington. The program will include two 15-minute videos. "Trees of Stone" will describe the area as a land once covered by trees and lush vegetation and then buried under lava millions of years ago. "The Great Flood" is a video about the cataclysmic floods, containing ten times the flow of all the world's rivers, which thundered across the Pacific Northwest, forming the Columbia River Basin. To expand the interest and educational value of our program, please bring any petrified wood specimens you may have collected in the Northwest.

## AFMS Merit Badge Program

If you are interested in participating in the AFMS Merit Badge Program, please contact either Marsha Owen (408) 337-5373 or Gail Matthews (650) 962-9960. This is a Junior program, but adults are highly encouraged to participate. It looks like a fun and very educational program. More information on the program at next month's meeting and in the November Breccia.

## Member News

We have one new member this month. Matthew "Matt" Wood was accepted into our society at our September Board meeting. Matt is interested in cutting and polishing rocks, collecting specimens, silversmithing, mineral collecting, and photography. Matt lives at 1220 Vienna Dr., Sunnyvale, CA 94089. His phone number is (408) 744-9402 and his email is matthew\_wood@comcast.net. Let's welcome him. Make sure you ask him about his Website.

## SCVGMS Calendar



**October 16** Mineraleers meeting at Chuck Boblenz home (408) 734-2473

**October 21** Club field trip to Clear Creek. Contact Marc Mullaney to make reservations to attend. (408) 691-1584

**October 24** *Regular business meeting*

**October 26** Board meeting at Frank Monez's home (408) 578-7067

**November 22-26** Jade Cove Field Trip Contact Marc Mullaney to make reservations to attend.

**November 28** *Regular business meeting, election of officers, and Silent Auction at 7:45 pm*

**November 30** Board meeting at John Eichhorn's home (408) 749-0523

**December 5** Installation Dinner at the Three Flames Restaurant. Please remember to bring an unwrapped toy to donate to Toys for Tots.

**December 7** Combined Board Meeting at Pat Speece's home (408) 266-4327

**Upcoming Field Trip  
to Clear Creek  
October 21  
8 AM Meeting time  
at "D" Mart in Gilroy  
Must RSVP for trip  
to Marc Mullaney  
(408) 691-1584 or  
email at  
geologistm@aol.com**

## Bay Area Mineralogist (BAM) Meeting

October 11, 2006 at 8:00 PM

at Foothill College in building 5400

Speaker: Brian White, Project Coordinator of the Clear Creek Management Area and members of his staff.

Suggested Topics for discussion:

1. Road Maintenance: Will current routes be maintained at least at current conditions? Can some degraded roads be improved? Permanent Route Closures—who and why?
  2. Seasonal Closures? How does the EPA concern over asbestos affect access?
  3. Camping Rules
  4. Historical background on lawsuits, Jade Mill, Pollution Abatement, New Idria
  5. What do you know about developments at the Benitoite Mine?
  6. Use Fee Plans
  7. Establishing working claims within CCMA
  8. How are plans prioritized between rockhound, motorcyclist, environmental concerns?
- Driving directions: Hwy 280 to El Monte Rd. Exit. West to Foothill College. Take one-way perimeter drive about 3/4 of the way around the campus and park in parking lot 5A or 6; go upstairs from 5A lot to Building marked 5400.

## Upcoming Field Trip Opportunities

Contact John Eichhorn (408) 749-0523 for information about the below field trips. John will make the appropriate introductions for you to be able to attend.

**Oct 2-6** Petrified Forest National Park AZ

**Oct 7** Soapstone Ridge CA for soapstone

**Oct 14** North Bay Field Trip Meeting at the Masonic Temple at 828 N. Branciforte Ave. Santa Cruz. Santa Cruz Club hosting meeting. Time: 9AM  
Bring a potluck item to share and silent auction items.

**Oct 14-15** Searles Lake, Trona, CA for halite, hanksite, and other minerals

**Oct 21** Clear Creek for jade, plasma agate, and marcasite. Call Marc Mullaney for more information (408) 691-1584. Reservations are required to attend this trip; be sure to call Marc.

## Be Safe - Be Well by Don Monroe, AFMS Safety Chair, AFMS Newsletter 9/06

### Protection

Do not get excited when you read the title of this article. It will be suitable for young readers and will not venture into forbidden or questionable areas. As a matter of fact, it will not cover any of the following subjects:

\* Burglar Alarms, the Mafia or other "protection agencies"

\* Snake Boots, chaps, or briar-proof pants.

\* Sunscreen or insect repellent

\* Goggles or safety glasses

\* Welding gloves or welding goggles

\* Bulletproof vests or mosquito nets

I want to talk about umbrella liability insurance.

This is not a commercial message or an infomercial. I have nothing to do with insurance except as a consumer. But I have been increasingly concerned about my fellow rock-hounds and lapidarists and exposure that they may not be aware of.

Ann and I are pretty much retired and live on retirement income and the little bit that we have put away for a rainy day. Much of our enjoyment is derived from pro-bono teaching (that means free), and we have become concerned that if someone in class or elsewhere is injured, we could be held liable even if we did nothing wrong. A little note in our auto club magazine pointed out dangers or situations that we had never thought of. Upon investigating, we learned that umbrella liability coverage is quite inexpensive, covers many situations, and can really add to one's peace of mind.

I have discussed this with several friends and relatives and have found two schools of thought (should we be surprised that any issue has two sides?). One school of thought was that the people I talked with were also unaware of the potential situation. They know that I write articles, and strongly suggested that the subject should be shared. The other school of thought is that when or if it becomes known that you have this coverage, you will be targeted for nuisance lawsuits.

I would really like some feedback on this situation.

### Keep it Sharp

As you may well know, I was raised on a farm. My father was my teacher in many areas, and we were set up to make or repair almost everything that we needed to produce our crops and raise our livestock. We had our own blacksmith shop and all of the other tools we needed to do most any type of wood or metal work. Since we lived about 5 miles out of the nearest small town, I was Dad's helper and go-for.

Dad taught many lessons dealing with all aspects of life, and I often heard the same story several times since he believed that repetition was an effective teaching method. The lesson that I heard the most dealt with cutting tools such as knives, axes, adzes, saws, chisels, and the like.

He always said that the most dangerous tool was a dull tool. He would say, "Sure, you can cut yourself with a sharp tool, but you are far more likely to injure yourself with a dull tool because you must apply much more force to do the job and slipping is more likely."

This adage has been a way of life for me, and I see many lapidarists who have problems due to dull tools. I think this issue can be most effectively demonstrated in the case of the graver. If a graver is not appropriately sharpened, the tool will skid across the work causing several problems such as a long unwanted cut or scratch in the work, or even worse, an unwanted cut in our hand or fingers. When tested, a sharp graver will make a smooth cut across the surface of your thumbnail without any slipping or gouging. This sharp cutting edge can be best obtained using fine stones or a fine synthetic ruby sharpening stone. Various stones require their own special lubricant such as fine oil or water. Do read the directions. I selected the graver as a subject at some time or another, but we do not use it enough to become proficient. Either take a course or read a good book to learn about using a graver.

A knife is a far more complex tool that we often realize. A knife-edge can be ground or honed to many different angles or "grind" as the knife makers say, and the purpose of the knife should influence how it is sharpened. The included angle made by the two surfaces of the edge can vary from about 15 degrees to about 35 degrees. The so-called sharper edge is great for slicing foods and tasks of that sort, but the less steep edge is necessary for chopping tasks to avoid chipping the edge of the blade. Axes and most chisels work best with a more blunt edge, but all edges are best when honed to a smooth finish unless you prefer the so called "wire edge" for cutting meat. Wire edges are often the choice of the professional butcher, but every butcher that I know well has his own ideas about the best edge for his work. This typifies a professional's attitude about his tools because we all take pride in our work and, if not professionals, are certainly craftsmen of note.

---

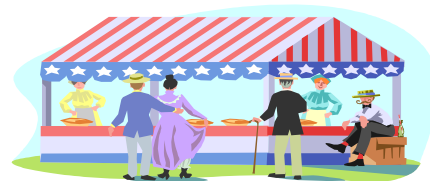
**Hazardous fumes!!** When repairing jewelry, beware of heating epoxy to the point of vaporizing. It is extremely poisonous and can cause instant pneumonia. A simple way to free a stone set with epoxy is to soak it in vinegar.

**Dangerous Chemicals!!** Always take five minutes to identify the rock and its chemical composition. There are 83 different silver minerals. 75% of them contain arsenic. Don't lick your specimens.  
via the Rock Rollers, 5/06; via Rock Chip Reporter, 8/06

**Rock Tip Trivia!!!** Tourmaline is the only word in the English language that contains ten letters, all different, and also all five vowels.  
via Rock Chip Reporter, 8/06

# CFMS Show Schedule

Changes to this calendar are printed in italics. For the latest version of the CFMS Show Schedule go to [www.cfmsinc.org](http://www.cfmsinc.org)



## 2006 Shows

**October 1 2006**, Falbrook, CA Falbrook Gem & Mineral Society 123 W. Alva (FGMS Headquarters) Hours: 10 - 4 Club Web Site: [www.fgms.org](http://www.fgms.org) There is a map on web site Janice Bricker (760) 728-1333

**October 7-8 2006**, Lakeside, CA El Cajon Valley Gem & Mineral Society Lakeside Rodeo Grounds 12584 Mapleview Hours: 10 - 5 both days David Newton (619) 390-5054

**October 14 2006**, West Hills, CA Woodland Hills Rock Chippers Eighth Annual Gem & Mineral Show 22700 Sherman Way Hours: 10 - 5 Virginia Rotramel (818) 790-7598 Email [show@rockchippers.org](mailto:show@rockchippers.org)

**October 14-15 2006**, Grass Valley, CA Nevada County Gem & Mineral Earth's Treasures Nevada County Fairgrounds 11228 McCourtney Road Hours: 10 - 4 both days Cliff Swenson (530) 272-3752

**October 14-15 2006**, Trona, CA Searles Lake Gem & Mineral Society "Gem-o-Rama" Searles Lake Gem & Mineral 13337 Main Street Hours: Sat. 7:30 - 5; Sun. 7:30 - 4 Bonnie Fairchild (760) 372-5356 Email [jbfairchild@verizon.net](mailto:jbfairchild@verizon.net)

**October 21-22 2006**, Anderson, CA Shasta Gem & Mineral Society Shasta District Fairgrounds Hours: Sat 10-5 Sun 10-4 Alex Stoltz (530) 474-4400

**October 21-22 2006**, Whittier, CA Whittier Gem & Mineral Society Whittier Community Center 7630 Washington Avenue Hours: 10 - 5 both days Jay Valle (626) 934-9764 Email [res19pnb@verizon.net](mailto:res19pnb@verizon.net)

**October 21-22 2006**, *Placerville, CA El Dorado Mineral & Gem Society El Dorado County Fairgrounds 100 Placerville Drive Hours: 10 - 5 daily Show Chair: Jackie Cerrato (530) 677-2975* Email: [jacobcber@directcon.net](mailto:jacobcber@directcon.net) Website: [www.rockandgemshow.org](http://www.rockandgemshow.org)

**October 27-28 2006**, Northridge, CA Del Air Rockhounds Gemboree United Methodist Church 9650 Reseda Blvd. (at Superior St.) Hours: Friday 3 pm - 9:30 pm; Sat. 10 - 5 Bim Wendler (818) 993-0119 Email: [del\\_air\\_rockhounds@yahoo.com](mailto:del_air_rockhounds@yahoo.com)

**October 28-29 2006**, Stockton, CA Stockton Lapidary & Mineral San Joaquin County Fairgrounds 1658 Airport Way Hours: 10 - 5 Jim Dunlap (209) 478-0747 Show Website: [www.Stocktonlapidary.com](http://www.Stocktonlapidary.com)

**October 28-29 2006**, Vista, CA Vista Gem & Mineral Society 1200 Vale Terrace Hours: Sat. 10 - 5; Sun. 10 - 4 Mary Anne Mital (760) 758-4599

**November 4-5 2006**, Concord, CA Contra Costa Mineral & Gem Society Centre Concord; 5298 Clayton Road Hours: 10 - 5 each day Bill McKay (925) 439-8195 Email: [williammmckay@hotmail.com](mailto:williammmckay@hotmail.com)

**November 4-5 2006**, Lancaster, CA Palmdale Gem & Mineral Club "Rock n Gem Roundup" Antelope Valley Fairgrounds 2551 West Avenue H Hours: 9 - 5 both days Susan Walblom (661) 943-1861 Rodney Shillings (661) 400-5198 Email: [sichaisson@yahoo.com](mailto:sichaisson@yahoo.com) Website: [pgmc@antelecom.net](http://pgmc@antelecom.net)

**November 4-5 2006**, Ridgecrest, CA Indian Wells Gem & Mineral Society Desert Empire Fairgrounds Call (760) 375-8000 for RV parking 520 S. Richmond Road Hours: 9 - 5 both days John De Rosa (760) 375-7905

**November 4-5 2006**, San Diego, CA San Diego Mineral & Gem Society Al Bahr Shrine Center (behind Hampton Inn) 5440 Kearny Mesa Road Hours: Sat. 9:30 - 5; Sun. 10 - 4 Wayne Moorhead (858) 586-1637

**November 10-12 2006**, Sacramento, CA Sacramento Mineral Society 64th. Annual "Harvest of Gems" Scottish Rite Center 6151 H Street Hours: Fri. 9 - 5; Sat. 10 - 6; Sun. 10 - 4 Sheldon Shuper (916) 383-9153 Email: [jfosback@aol.com](mailto:jfosback@aol.com)

**November 11-12 2006**, *Anaheim, CA American Opal Society Clarion Hotel Anaheim Resort 616 Convention Way Hours: Sat. 10 - 6; Sun. 10 - 5 Website: [opalsociety.org](http://opalsociety.org) Jim Lambert (714) 891-7171 Email: [jlamb777@yahoo.com](mailto:jlamb777@yahoo.com)*

**November 11-12 2006**, Yuba City, CA Sutter Buttes Gem & Mineral Yuba Sutter Fairgrounds (Franklin Hall) 442 Franklin Avenue Hours: 9 - 4 both days Cliff Swenson (530) 272-3752

**November 18-19 2006**, Livermore, CA Livermore Valley Lithophiles The Barn; 3131 Pacific Avenue Hours: Sat. 10 - 6; Sun. 10 - 5 Joyce & Dick Friesen (925) 447-8223

Email: [friesenjoyce@ixinet.com.net](mailto:friesenjoyce@ixinet.com.net)

**November 18-19 2006**, Oxnard, CA Oxnard Gem & Mineral Society Oxnard Performing Arts Center 800 Hobson Way Hours: Sat. 9 - 5; Sun. 9-4 Norb Kinsler (805) 644-6450 Show website:[www.ogms.net](http://www.ogms.net)

**November 18-19 2006**, Victorville, CA Victor Valley Gem & Mineral Club San Bernardino County Fairgrounds 14800 7th Street Hours: Sat. 9 - 5; Sun. 9 - 4 Jo Ann McPurdy (760) 217-2628 Website: [www.gbeal5084@aol.com](http://www.gbeal5084@aol.com)

**November 25-26 2006**, Barstow, CA Mojave Desert Gem & Mineral Society Barstow Community Center 841 Barstow Road Hours: 10 - 5 both days Gene Haines (760) 256-0595

**December 2-3 2006**, Orangevale, CA American River Gem & Mineral Society Orangevale Grange 5805 Walnut Avenue (near Madison Avenue) Hours: 10 - 5 both days Evelyn Tipton (916) 372-3452 Email [ektipton@charter.net](mailto:ektipton@charter.net)

## 2007 Shows

**January 20-21 2007**, Exeter, CA Tule Gem & Mineral Society Exeter Veteran's Memorial Bldg. Hwy 65 Hours: Sat. 10 - 5; Sun. 10 - 4 Steve Hayward (559) 734-3843 Email: [smhay734@aol.com](mailto:smhay734@aol.com)

**February 16 - 25, 2007**, *Indio, CA San Geronio Mineral & Gem Society Riverside County Fair & National Date Festival Gem & Mineral Building Bldg #1 46-350 Arabia Street Hours: 10 am - 10 pm Bert Grisham: (915) 849-1674*

**March 2-4 2007**, *Hayward, CA Mineral & Gem Society of Castro Valley Centennial Hall 22292 Foothill Blvd. Hours: Fri. & Sat. 10 - 6; Sun. 10 - 5 Larry Ham (510) 887-9007 Email: [info@mgscv.org](mailto:info@mgscv.org)*

**March 3-4 2007**, Ventura, CA Ventura Gem & Mineral Society The Ventura Gem Show: Gems; Minerals, Lapidary Arts, & Fossils Seaside Park- Ventura County Fairgrounds, 10 W. Harbor Blvd. Hours: Sat. 10 - 5; Sun. 10 - 4 Ed Clark (805) 983-0028 Email: [clarkoe@adelphia.net](mailto:clarkoe@adelphia.net)

**March 10-11 2007**, Turlock, CA Mother Lode Mineral Society Stanislaus County Fairgrounds Hours: 10 - 5 Bud & Terry McMillin (209) 524-3494 Email: [terry.mcmillin@yahoo.com](mailto:terry.mcmillin@yahoo.com)

**March 23, 24, & 25 2007**, *Bakersfield, CA San Joaquin Valley Lapidary Society 5th Annual Rock & Mineral Rendezvous Indoor Show/Outdoor Tail Gate Kern County Fairgrounds Hours: Fri. 9 - 8; Sat. & Sun. 9 - 5 Lewis Helfrich (661) 872-8230 or 323-2663*

**April 14-15, 2007**, San Jose, CA Santa Clara Valley Gem and Mineral Society, Santa Clara County Fairgrounds, 344 Tully Rd. San Jose, CA 10-5 both days, Marc Mullaney (408) 691-1584 Club Website: [www.scvgms.org](http://www.scvgms.org) Email: [info@scvgms.org](mailto:info@scvgms.org)

**June 2-3 2007**, *Glendora, CA Glendora Gems 859 E. Sierra Madre Hours: Sat. 10 - 5; Sun. 10 - 4 Bonnie Bidwell (626) 963-4638 Email: [YBidwell2@aol.com](mailto:YBidwell2@aol.com)*

**June 15-17 2007**, Lancaster, CA Palmdale Gem & Mineral Club Antelope Valley Fairgrounds Hours: 9-5 Daily Email: [pgmc@antelecom.net](mailto:pgmc@antelecom.net)



# TRUTH AND SOME CONSEQUENCES

by Jon Spunaugle, Conservation & Legislation Chair  
From the AFMS Newsletter, September 2006

## Wilderness

On July 24th and 25th, 2006 the U.S. House of Representatives passed several wilderness bill designations by voice vote. They passed unanimously. One of the Bills has a similar Bill already passed by the U. S. Senate which means its passage by Congress is very likely. The others need to gain support in the US. Senate if they are to pass Congress. There is no indication about the Presidents attitude on any of these Bills, but it seems likely that the President would sign them rather veto them if they arrive on his desk, given his reluctance to use his veto power.

### The Bills passed by the U.S. House.

**HR-233** "Northern California Coastal Wild Heritage Act" which would designate 277,000 acres in Northern California as wilderness. The Bill numbers are HR-233 passed in the U.S. House on 7-24-2006 and S-128. passed a year earlier in the U.S. Senate on 7-26, 2005. The House passed bill has been placed on the calendar of the US Senate for a vote. It would normally be passed easily and sent to the President for signature..

**HR 3817**, "Mount Hood Stewardship Legacy Act" which designates 77,200 acres in seven separate parcels in the Mount Hood National Forest, Oregon as wilderness. This Bill has been sent to the U.S. Senate for consideration. There are no similar or related Bills in the U.S. Senate on this proposal and it is not known how the two Oregon Senators view this Bill. The House passed Bill was referred to the U.S. Senate and sent to the Senate Committee on Natural Resources.

**HR 3603**, "Central Idaho Economic Development and Recreation Act". would designate 315,215 acres as wilderness in the Sawtooth and Challis National Forests as well as convey several parcels of BLM and National Forest land to the counties and cities of Idaho. No related Bills have been introduced into the U.S. Senate, nor do the two Idaho Senators seem to favor much of this legislation.

**HR 3817**, "Valle Vidal Protection Act of 2005", Though not specifically a "wilderness bill" this Bill would Withdraw 101,794 acres in the Valle Vidal Unit of the Car-

son National Forest ( New Mexico) from: (1) all forms of entry, appropriation, and disposal under public land laws; (2) location, entry, and patent under mining laws; and (3) operation of laws pertaining to mineral leasing, geothermal leasing, and mineral materials. It does not, however add these acres to the National Wilderness system. The House passed Bill was referred to the U.S. Senate and sent to the Senate Committee on Natural Resources.

Both the Idaho and the Northern California areas are likely to have hobby materials within their borders. We suggest you contact your Senators to advise them how you feel about these designations.

### The America the Beautiful Pass:

Up to this point all indications seemed to point to a 2006 public input opportunity to comment on the cost and terms of the issuance of this pass. Now it looks like the process has been pushed back several months due to a conflict in the name "America the Beautiful Pass" which might be a violation of a copyright. Some new information can be found on the internet at <[www.govworks.gov/solic/uploads/44091\\_QA.pdf](http://www.govworks.gov/solic/uploads/44091_QA.pdf)>. The agencies are continuing to develop the procedures for issuing the passes mandated by the "Lands Recreation Enhancement Act". It is not a question of "if", but only a question of "when".

New Forest Service Outdoor Recreation Accessibility Guidelines (FSORAG), and Forest Service Trails Accessibility Guidelines (FSTAG)"

On May 22, 2006 the U.S Forest Service published new guidelines for the agency in developing and restoring recreation areas. Most of the guidelines deal with trails, toilet facility dimensions, day camping facilities and structures, parking areas and the like. These are very likely precursors to these facilities requiring a permits or passes for use by the forest visitor.

### Fossil Bill

"Paleontological Resources Preservation Act" Senate Bill 263 remains in the U.S. House of Representatives Committee on Natural Resources without any action taken by the House or the Committee.

## www.scvgms.org Update By RK Owen

Some people have experienced problems when down-loading the Breccia in the PDF form. I believe most are related to Windows and IE. Since it's not really possible for the webmaster resolve all such issues, a link has been added to the Breccia index page pointing to a Google search of possible fixes and solutions. One may work for you. However, having an updated system seems to be the most likely "fix".

Back in June 2004, the Computer Emergency Response Team (CERT) recommended that IE users migrate to other browsers due to the many security problems found with IE. The webmaster recommends the Firefox browser, since it's generally more secure than IE, and is more web standard compliant, and will update itself when fixes are available. A link has been added on the Breccia index page to the Firefox home page.

The on-line glossary has had 10 new definitions added, many of which were culled from recent Breccia articles. Also I added Club member Rick Kennedy's article - "The Care and Feeding of Your Benitoite Specimen: Helpful Etching Techniques" to the "links" page (and the sitemap). This is the reprinted article he handed out at the Sept 2005 general meeting during his insightful and entertaining talk on benitoite.

## Field Trip Opportunity:

On Saturday, **January 20, 2007, at 9 AM** our club will be taking a field trip to the California Academy of Science Museum to visit the ***Dinosaurs-Ancient Fossil, New Discoveries*** exhibit. We need to purchase tickets in advance for this event to ensure that our entire group will be able to attend this event on this day. Please return the below form and payment (Check written to SCVGMS) to June Harris, 107 Dell Way, Scotts Valley, CA 95066 by **November 28, 2006**.

Name: \_\_\_\_\_

Phone Number: \_\_\_\_\_

# Adult Tickets \_\_\_\_\_ X \$11.50 each \_\_\_\_\_

# Senior Adult Tickets (65 and over) \_\_\_\_\_ X \$8.00 \_\_\_\_\_

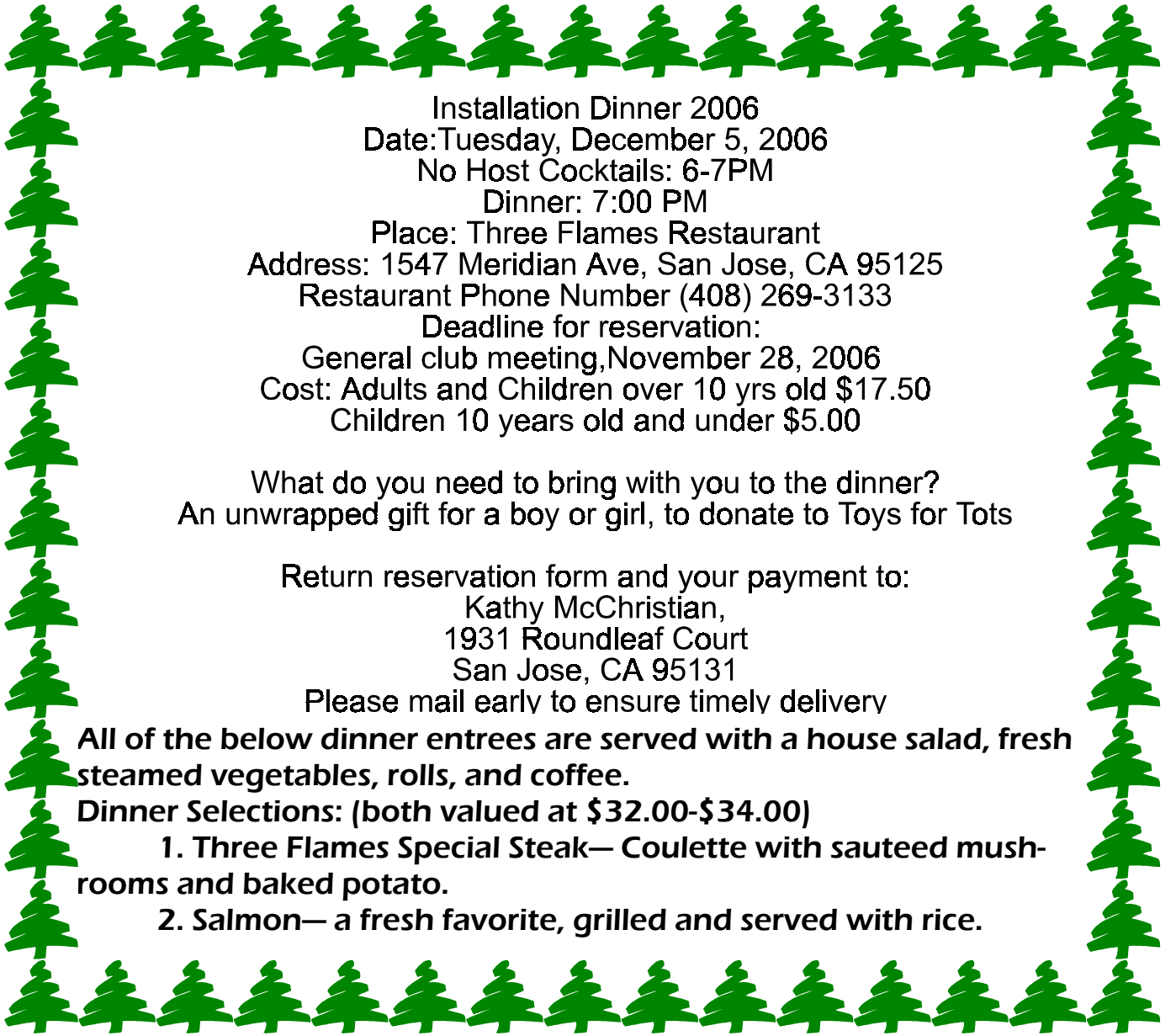
# Youth Tickets (ages 12-17) \_\_\_\_\_ X \$8.00 \_\_\_\_\_

# Child Tickets (ages 4-11) \_\_\_\_\_ X \$3.50 \_\_\_\_\_

Total Sent \$ \_\_\_\_\_

## Benitoite Mine Reopened By June Harris

I recently received an email from Rick Kennedy who was passing along some information to be announced at our September Club meeting. Among other topics was the Benitoite mine which is located with the BLM Clear Creek Management Area. Rick stated he has spoken with current mine owner, Dave Schreiner, and that the mine has been reopened. Dave Schreiner is ready to start making appointments for people to come up to the mine and collect. He needs a minimum of five people on any given day to make it cost effective. The cost is \$100.00 per person for a day of collecting. At the present, Rick does not believe that Dave is allowing Black light collecting at night. If you are interested in collecting at this mine, call Dave at home (559) 935-5909 or cell (559)284-4126. Maybe someone will lead a field trip to the mine. Any volunteers????



Installation Dinner 2006  
Date: Tuesday, December 5, 2006  
No Host Cocktails: 6-7PM  
Dinner: 7:00 PM

Place: Three Flames Restaurant  
Address: 1547 Meridian Ave, San Jose, CA 95125  
Restaurant Phone Number (408) 269-3133

Deadline for reservation:  
General club meeting, November 28, 2006  
Cost: Adults and Children over 10 yrs old \$17.50  
Children 10 years old and under \$5.00

What do you need to bring with you to the dinner?  
An unwrapped gift for a boy or girl, to donate to Toys for Tots

Return reservation form and your payment to:  
Kathy McChristian,  
1931 Roundleaf Court  
San Jose, CA 95131

Please mail early to ensure timely delivery

All of the below dinner entrees are served with a house salad, fresh steamed vegetables, rolls, and coffee.

Dinner Selections: (both valued at \$32.00-\$34.00)

- 1. Three Flames Special Steak— Coulette with sauteed mushrooms and baked potato.
- 2. Salmon— a fresh favorite, grilled and served with rice.

## Reservation Form for Installation Dinner

Name: \_\_\_\_\_ Phone #: \_\_\_\_\_

Number of Adults and children over 10 years old: \_\_\_\_ X \$17.50 = \_\_\_\_\_

Number of Children (10 years old and under) \_\_\_\_\_ X \$5.00 = \_\_\_\_\_

Total Owed \_\_\_\_\_

Please make checks payable to: Santa Clara Valley Gem and Mineral Society

Meal Selections below:

\_\_\_\_ Adult Meal #1 Three Flames Special Steak Dinner \$17.50 each meal

\_\_\_\_ Adult Meal #2 Salmon Dinner \$17.50 each meal

\_\_\_\_ Child's Meal only for children 10 years old and younger \$5.00 each

Mail this form and your payment to:

Kathy McChristian, 1931 Roundleaf Court, San Jose, CA 95131

Questions: Call Kathy (408) 258-8400

## Proposed Bylaws Change

By June Harris

I presented a proposal to change the current editor job requirements to the Board in August. It was discussed at the August meeting, and at the September Board Meeting was approved to be presented to the general membership at the October meeting for questions and discussion.

Presently the bylaws (Article VI, Section 6) are stated the follows: ***"The Breccia Editor shall prepare the Breccia each month. All Regular and Board Meeting minutes shall be published verbatim. The Editor may appoint a publisher to assist."***

The proposed change would be stated as follows: ***"The Breccia Editor shall prepare the Breccia a total of 10 editions per year. All Regular and Board Meeting minutes shall be published verbatim. The Editor may appoint a publisher to assist."***

As this is a change to the Bylaws, it will be necessary for this to be presented to the membership at a regular meeting. It can be voted on at the next regular meeting, and requires a 2/3 vote for passage. Please be at the October meeting to have your questions answered.

## The Truth about Email

### Petitions - Please take note

**Editor's Note:** This is an email from John And Billie Wright from the Mississippi Gulf Coast Club. I thought it was very enlightening, as I get many email petitions from a variety of sources. I'm sure that you get some as well. Read on to find out more.

To whom it all concerns,  
Just a word to the wise. Email petitions are NOT acceptable to Congress or any other municipality. To be acceptable petitions must have a signed signature and full address. Almost all email that ask you to add your name and forward on to others are similar to that mass letter years ago that asked people to send business cards to the

little kid in Florida who wants to break the Guinness Book of Records for the most cards. All it was and all this email is to get names and "cookie" tracking info for tele-marketers and spammers to validate active email accounts for their own purposes. Any time you see an email that says forward this on to "10" of your friends, sign this petition, or you'll get good luck or whatever, has either an email tracker program attached that tracks the cookies and emails of those folks you forward to or the host sender is getting a copy each time it gets forwarded and then is able to get lists of "active" emails to use in spam emails or sell to others that do.

FYI If you want to forward stuff like this because it's interesting, take off all the "front" info and all the forwards and DON'T add your name to them.

Take care.

Forward this to others and you will be providing a good service to your friends and will be rewarded by not getting 30000 spam emails in the future. I always doubted if these email petitions ever accomplished anything. Now I am going to delete all petitions no matter what they promote. If anyone can show me where a petition has ever had any results I will reconsider.

NOTE: there are very, very few petitions that allow you to sign up on the Internet, and those have specific web sites you must go to in order to do so. Give everybody a break by not forwarding all those petitions.

Click below to check it out with Truth or Fiction.

<http://www.truthorfiction.com/rumors/p/petitions.htm>

## Do You Know that...

Author Unknown

Source: Outcroppings, 1/01; via Canaveral Moonstone, 5/06; via The Mountain Gem, 9/06.

**Karat** is a measure of fineness—24 karat is fine gold. 1 karat equals 1/24 (0.0417). Thus 14 karat gold is 14/24 fine gold and the balance (10/24) alloy. The usual alloy metals are silver, copper, and zinc. Nickel is used in white gold.

**Colors of Gold**—Yellow, green, red, and white—are produced by variations in the alloy. Silver and zinc tend to give a green color; copper—red and nickel—white.

**Gold Filled** is made by joining a layer (or layers) of gold alloy to a base metal alloy and then rolling or drawing to the thickness required.

**Gold Electroplate** is usually made by electrolytic deposition of fine gold on a base metal.

**Gold Solders** are usually 2 to 4 karats less than gold on which they are used.

**Sterling silver** is 925/1000 (92.5%) fine silver and 75/1000 (7.5%) copper.

**Coin Silver** is 900/1000 (90%) fine silver and the balance copper.

**Foreign Silverware** contains varying percentages of silver. In some cases it is as low as 700/1000 (70%)

**Silver plated ware** is made by electroplating fine silver on a base alloy—usually nickel silver or Britannia metal, sometimes brass or copper.

**Sheffield Plate** (original) was made by soldering sheet silver onto copper, rolling, and manufacturing into hollow-ware. Imitations are made by electroplating silver or copper.

**Nickel Silver**—so called— is a composition of nickel, copper, and zinc. (it contains no silver)

**German Silver**— a misleading name— the same as nickel silver. (It contains no silver)

**Britannia Metal** is a composition of tin, copper, and antimony.

**Pewter** (original) was primarily a lead alloy. It is now made in a tin, copper, antimony composition similar to Britannia metal.

**Grain** originally meant the weight of a grain of wheat. It was later standardized for trading purposes, but it's little used now, most weighing being done in ounces and decimal parts or in pennyweights and decimal parts.

## Super Quiz

By Ken Fisher

Via North American Syndicate, via The Badger Diggin's, 9/06

Take this Isaac Asimov's Super Quiz to a Ph.D. Score 1 point for each correct answer on the Freshman level, 2 points on the Graduate level, and 3 points on the Ph.D. level.

### Freshman Level

1. A variety of quartz that is colored violet by impurities.
2. A hard, dense, shiny variety of coal.
3. A clear, green gemstone variety of the mineral beryl.

### Graduate Level

4. The principal ore of aluminum.
5. The red, transparent gem variety of the mineral corundum.
6. Sedimentary rock composed of chiefly of calcium carbonate.

### Ph.D. Level

7. The principal ore in iron.
8. A coarse-grained, intrusive igneous rock, typically consisting of the minerals quartz, feldspar, and mica.
9. A generally colorless transparent mineral, an allotrope of carbon.

Answers: 1. Amethyst 2. Anthracite 3. Emerald 4. Bauxite 5. Ruby 6. Limestone 7. Hematite 8. Granite 9. Diamond.

Scoring: 18 points –congratulations, doctor; 15 to 17 points– honors graduate; 10-14 points - you're plenty smart enough, but no grind; 4-9 points—you really should hit the books harder; 1-3 points — enroll in remedial courses immediately; 0 points– who read the questions to you?

## Geology Concepts

Part 2 of a monthly feature by Club Member  
Dave Woolley, Geologist Sr. VDOT  
Geologists identify earth minerals by mineral  
content, origin, and particle size.

### WATER

Rain water penetrates soil and rock depending on porosity, permeability, and discontinuities. Water flows vertically through the earth by gravity to the elevation so sea level. In time, water may saturate the ores in slowly permeating earth-materials and rise up to elevations above the level of the oceans. This build up of height forces laterally flowing water is called the water table.

Any body of pore-saturated water in the earth is called an aquifer. Water is pushed in to the sea from unconfined aquifer that is located on an impermeable barrier that occurs above the water table. The upper surface of water retained on a perched aquifer is called a perched water table. Examples "hard pan" can create a shallow barrier retaining water. Other barriers include trapped between two impermeable layers, encapsulated in a confined aquifer, a hydraulic head, as opposed to elevations of perched water tables and the water table, any of which can be higher or lower

At some locations water leaks from the edge of a perched aquifer: water travels vertically from one perched water table to another, ultimately to the water table. Sometimes water travels in erratic directions along discontinuities, downward by gravity or upwards by a hydraulic head joints, faults, and crushed quartz veins in residual soil, act as high speed conduits. Adjacent earth-materials, joints faults and veins may lack water depending on whether or not they contain or access an aquifer.

Note:

Water may be attracted by capillary action to a thin zone above any water table.

An unconfined aquifer may intercept the earth's surface as a spring.

A confined aquifer may produce artesian flow. The water table typically intercepts streams,

creeks, and rivers, although the water table may sometimes be just below the bed of an intermittent or "wet weather" creek and a losing creek. The water table is above a creek's elevation at a "gaining creek."

***Combined with carbon dioxide from the atmosphere, rainwater forms carbonic acid. Such acid solutions percolate through soil into rock causing chemical weathering.***

Chemical Weathering:

Water flows over impermeable rock, through permeable rock, and along discontinuities in rock where weak carbonic acid initiates the process of chemical weathering: certain minerals of rock are attacked. Chemical weathering progressively creates zones of weathered rock, decomposed rock, and residual soil. Cavities form in limestone, dolostone, and marble, plus rocks containing minerals such as the evaporated mineral halite. Calcite in limestone is the first common mineral to succumb to chemical weathering; feldspar then mica is the last. Quartz resists weathering. Certain shales weather to expanding clay within days of disruption or exposure; pyritic rock may expand and release sulfuric acid. Pyritic marine soils release acid. Dunite, certain hornblends, sandstones, and other rock varieties rapidly change from rock to sand as the contacts between mineral particles deteriorate.

---

## Gem of Greenland: Rubies

Ref: Discover, A. Cassellman, 12/05; via Petrograph, 7-8/06; via Lapidarian, 9/06.

The very northern parts of North America have a treasury of gems. Diamonds, emeralds, sapphires, and it appears rubies. According to Andrew Lee Smith, the head of True North Gems, Canada's leading gemstone exploration company, "In Greenland, rubies are thick on the ground everywhere. You can't set foot anywhere without stepping on five or six rubies." Canada is furnishing diamonds to the world, the Yukon shipping out emeralds, the Inuit are finding sapphires on Baffin Island, and now Greenland supplies rubies. The largest ruby found in North American history was recently weighed in at 200 carats. Global warming is making exploration in the Canadian Arctic easier to explore for gems.

**Santa Clara Valley Gem and Mineral Society  
General Meeting Minutes  
September 26, 2006**

President John Eichhorn called the meeting to order at 7:42 PM at the Belwood Cabana Club in Los Gatos. Members and guests were welcomed. Minutes were approved as printed in the Breccia. The Board meeting will be at Frank Monez' home on Thursday, September 28 at 7:30 PM.

**Correspondence:** None.

**New Members:** Frank Santos and Dean Welder were presented their new member packets.

**Hospitality:** There were 40 members and 4 guests in attendance tonight.

**Nominating Committee:** Marc Mullaney, June Harris, Jane Yamashita, and Ruth Bailey were nominated for the Nominating Committee. A vote was held, and Marc, June, and Ruth were elected.

**PLAC:** See details in the Breccia.

**Field Trips:** See details in the Breccia.

**Study Groups:** See details in the Breccia.

**Sunshine:** John Eichhorn's daughter had a baby. Jim Robertson has cancer in his spine. Alice McCammon is looking well.

**Federation Report:** Ruth Bailey reported on her trip to Camp Paradise. Zyzyx will be in March of 2007.

**2007 Show:** See details in the Breccia. The next show meeting will be October 5<sup>th</sup> at Ruth Bailey's at 7:30PM.

**Donation Receiving Committee (DRC):** There is a rock sale this Saturday at Pat Speece's house from 9 to 12.

**Demo Day:** The study groups will have a Demonstration Day on November 11 here at the Cabana Club. Hours are from 10:00 AM to 3:00 PM.

**Dues:** Delinquent notices have gone out.

**Member Displays:** See details in the Breccia.

**Program:** See details in the Breccia.

Meeting was adjourned at 9:38 PM.

There will be a potluck before the meeting in October. Everyone bring their favorite dish.

The fun starts at 6:30PM.

Respectfully submitted,  
Randy Harris, Secretary

---

**Santa Clara Valley Gem and Mineral Society  
Board Meeting Minutes  
September 28, 2006**

President John Eichhorn called the meeting to order at 7:35 PM at the home of Frank Monez. All board members were present except Bill Gissler. Also present were George Yamashita and Kathy McChristian. Parliamentarian remains vacant. M/ S/ P to approve the minutes for the August 24, 2006 meeting as read.

**Treasurer's Report:** M/ S/ P to pay the bills. There was discussion of members who are delinquent in their dues. M/ S/ P to drop the remaining delinquent members.

**New Members:** M/ S/ P to accept Matt Woods for membership.

**Communications:** We received a Dodge & Cox report, subscription information for Lapidary Journal, a postcard about a new rock shop (Marsha's Minerals and Rocks) in Los Molinos, CA, a postcard from The Gem Shop regarding 2007 Agate calendars, a flier about a rock sale in Westminster, and field trip information from the co-op.

**Field Trips:** Clear Creek on October 21<sup>st</sup>. See details in the Breccia.

**Show Report:** Marc Mullaney reported on the 2007 show. See details in the Breccia.

**Sunshine:** Jim Robertson is not doing well.

**Installation Dinner:** Kathy McChristian reported that the cost is going to be higher than last year. M/ S/ P to keep the reservation at Three Flames Restaurant, raise the member price to \$17.50, and keep the same menu as last year without the dessert. M/ S/ P to find a new location for next year.

**PLAC:** See details in the Breccia.

**DRC:** Tables and plastic busboy trays have been purchased to display the rocks better at the rock sales. Discussion was held about the Donation Receiving policy and how the committee is operating. M/ S/ P to table further discussion until the trial period has expired.

**Unfinished Business:** The lapidary shop at Shoup Park is closed indefinitely. Frank Mullaney is looking for paperwork for the Dodge & Cox account.

**Bylaws:** M/ S/ P to recommend the proposed Editor bylaw change to the general membership. The new language will allow the Editor to produce 10 newsletters per year instead of the current 12.

**New Business:** There was discussion about how much it costs to produce the Breccia now as compared to the old method.

M/ S/ P to adjourn at 9:12 PM.

Frank Monez served delicious refreshments that were enjoyed by all.

Respectfully submitted,  
Randy Harris

---

Santa Clara Valley Gem and Mineral Society  
Treasurer's Report  
September 28, 2006

Beginning Balance		\$11,470.90
Receipts		
Rock Sale	\$ 563.40	
Member Dues & Initiation	\$ 271.00	
2007 Show Dealer Fees	<u>\$6,382.00</u>	
Total Receipts		\$7,216.40
Disbursements		
Pat Speece/DRC expense	\$ 23.77	
June Harris/Copying	\$ 7.05	
June Harris/ Aug. BBQ	\$ 104.69	
Expressions/ Newsletter	\$ 41.57	
Expressions/ Show flyers	\$ 146.14	
Pat Speece/DRC expenses	<u>\$ 302.33</u>	
Total Disbursements		\$ 625.55
Ending Balance		\$18,061.75