



# Breccia

## Santa Clara Valley Gem and Mineral Society (SCVGMS)

P.O. Box 54, San Jose, CA 95103-0054

Website: [www.scvgms.org](http://www.scvgms.org)

Email: [info@scvgms.org](mailto:info@scvgms.org)

Phone Number (408) 265-1422

### An Invitation

This society is pleased to invite guests to attend general meetings, study groups, and field trips. General meetings are normally held the fourth Tuesday of every month at 7:45 PM at 100 Belwood Gateway (The Cabana Club), Los Gatos, CA 95032. Belwood Gateway is just south of Blossom Hill Rd. between Leigh Avenue and Harwood Rd..

**Society Purpose:** The inculcation of a love of rocks and minerals by the furtherance of members' interests in the earth sciences and by education in all facets of related educational activities with the promotion of good fellowship, proper ethics, and conduct.

**Membership Requirements:** Attendance at two general meetings within twelve months. This society is a member of the California Federation of Mineralogical Societies (CFMS) and is affiliated with the American Federation of Mineralogical Societies (AFMS). Dues are \$10.00 per year.

**General Meeting:** will be the Installation Dinner on December 5, '05 at the 3 Flames Restaurant at 1547 Meridian Ave. San Jose, CA 95124 "No Host Cocktails" from 6-7 PM and Dinner at 7:00 PM

**Board Meeting:** will be December 8, '05 at Pat Speece's Home at 2357 Loma Park Court, San Jose, CA 95124 at 7:30 PM

### Study Groups

**Stringers:** Stringers 1 and 2 meet respectively on the second Thursday and second Wednesday of the month.

Groups led by Pat Speece. For info call Pat (408) 266-4327

**Facet Cutters:** meet on the first Tuesday of the month. Group led by Bill Norton. Call for info (408) 356-8254.

**Carvers:** meet on the third Monday of each month. Contact Herb Vogel (408) 247-1018 for information and details about joining this group.

**Cutaways:** meet on the first Saturday of the month at the Shoup Park Lapidary Shop. Group led by John Eichhorn. For more info call (408) 749-0523.

**Mineraleers:** meet on the second Monday of the month. Group is led by Chuck Boblenz. Call for info (408) 734-2473

**Silversmithing:** beginning and advanced classes are led by Kelly Van Vleck and John Bahr. Call Kelly for info (408) 262-8187.

**Juniors:** are led by Mark Wartenberg. Outings and get togethers are announced at general meetings and via email. Contact Mark Wartenberg for more info (650) 568-6114.

**Fossileers:** will be meeting quarterly for an outing and a study session. For more info call Gail Matthews (650) 962-9960.

# John's Note June's Jabberings

The Installation Dinner is coming up on Dec. 5<sup>th</sup>. DON'T FORGET TO BRING A GIFT FOR THE TOYS FOR TOTS PROGRAM!

Our new officers for 2006 have been elected, but we still need a Treasurer and a Parliamentarian. Anybody can volunteer for these positions.

I would like to thank everybody for their efforts this year, and I am looking forward to your ideas and support in the next year.

Those who attended the field trip to Seacliff Beach were treated to a great slide and lecture presentation by the docent. The lecture included interesting history of the geology and life forms from the past to the present and a walking tour and description of the fossil beds in the cliffs along the beach. We finished the trip with a hike along the beach north of New Brighton looking for marine fossils.

See you at the Christmas Party!

Thank You, John Eichhorn

Installation Dinner on  
December 5, '05 at the  
3 Flames Restaurant,  
1547 Meridian Ave.,  
San Jose, CA 95124  
No Host Cocktails 6-7PM  
Dinner at 7PM  
Bring a gift for  
Toys for Tots

Well, it's hard to believe that two years have gone by since I took over the job of Editor. It hardly seems that long. I'd like to thank a couple of people who have helped with getting the Breccia out each and every month. Ruth Bailey keeps our mailing list current, and she and Bill Norton handle the actual mailing of the newsletter. RK Owen handles our superb Website and promptly posts the Breccia each and every month as well as handling any problem that might occur with the Website. Linda Spencer does all the Breccia proofreading (believe me there is a lot to check and read). I'd also like to thank the study group leaders, committee chairs, and officers, who get their reports to me before the regular business meeting. I'd also like to thank Pat Speece, Ruth Bailey, and Bill Gissler for taking the time to submit articles. Lastly, I'd like to thank my husband for his help and support, without which I wouldn't be able to continue in this position.

This last year we have finally realized the conversion of a majority of our newsletter subscriptions that are going out via email and Website download rather than snail mail. Last year at this time we were in the process of trying to get all of our exchange newsletters converted to email delivery. We used to send out over 200 newsletters a month via snail mail and now we send out just over 50. The rest are being delivered via email. This is a real savings in postage and paper costs.

The cost of printing and postage for the newsletter is significantly more than the dues collected for each member. As of January 1, the cost of the newsletter will go up to at least \$1.30 per issue per address. With the cost of postage and paper due to go up again, if there is anyone who would like to try getting the newsletter via email or downloading it from our website, you can try it for a month or two and see if it's for you. Let me know if you'd like to try getting the newsletter via email. Saving the Breccia to a file in your computer saves space and decreases clutter. Also, you always know where it is. Printing only the pages you need saves paper, too.

This year I'm going to continue to try to expand our exchange newsletters to include all 50 states and some foreign countries, as well. It's been interesting to see what's happening in the hobby of rock collecting and lapidary work in different places around the United States and the world. Presently we get newsletters from 33 other states. More and more clubs offering their newsletters via email or from a Website, this makes it very easy to exchange newsletters. Each month, between exchange clubs and our members, I send out over 175 copies of the Breccia via email.

Well, time to close this note and start laying out this next year's plan of attack. Have a Merry Christmas! June

# Check out what our study groups are doing!!!

## MINERALEERS BY CHUCK BOBLENZ



The Mineraleers met on Nov. 14th at the Boblenz' residence and spent the evening touching, feeling, and talking about Tourmaline. Many of the specimens that were provided for discussion were from the Stewart Lithia Mine in San Diego County, Thomson Peak from Plumas County, and Afghanistan. The discussion was lively and went into the detail of the species. Jeri served delicious refreshments following the discussions.

The next meeting will be Jan 9th at the Boblenz' residence, and the topic will be Wulfenite. So dust off your specimen and plan to join us then. Call Chuck or Jeri for directions (408) 734-2473.

## Stringers 1 & 2 by Pat Speece



Stringers 1 made lapel pins and learned about bead tips, how to use them, and then made a bracelet using the bead tips. Our December project is to make earrings using French loops, spacers and headpins to match one of the bracelets we've already made.

Stringers 2 learned about crimp beads and pliers, then made a crimp bead bracelet. Our next and last project is to make a watch/bracelet which also requires crimps. We are in the planning stage for next year's projects and schedule. If you have any druthers or suggestions, email me at [sparkylarky@sbcglobal.net](mailto:sparkylarky@sbcglobal.net), or call me at 408-266-4327.

## Faceters



The Faceters will meet on February 7 at Bill Norton's home, 276 Belblossom Way, Los Gatos 95032 at 7:30 PM. If you are interested in joining this study group, contact Bill at (408) 356-8254.



## Silversmithing by Kelly Van Vleck

The next silversmithing class will be a beginner class in February of 2006. If you are interested in taking this class or a more advanced course, please contact Kelly Van Vleck or Pat Speece to sign up. More information will be available at a regular meeting in the near future.



## CUTAWAYS

The Cutaways group will be meeting on December 3 from 10-12 at Shoup Park. Call John Eichhorn at (408) 749-0523 for information and driving directions.

## Carvers



No report submitted. If you are interested in the joining the Carvers study group, contact Herb Vogel for information, (408) 247-1018.



## Fossileers

No report submitted. If you are interested in joining the Fossileer study group, please contact Gail Matthews at (650) 962-9960.

## Field Trips for 2005

By Jennifer House (408) 243-7025

North Bay Field Trip and CO-OP Coordinator  
If you would like a list of upcoming North Bay field trips or CO-OP field trips please contact Jennifer for a current updated list. If you are planning on attending any field trips listed below, please contact Jennifer to get information on the contact person for that field trip. Be sure to wear your SCVGMS name tag when you attend.

Dec 27-30 Eastern San Diego County for tourmaline, and to visit mining and gem establishments. Fee dig a possibility. SCVGMS contact Jennifer House (408) 243-7025.

Do you like to collect rocks?  
Do you have any favorite  
places on public land?  
Did you know that your  
favorite spot might be closing?  
Maybe you should attend  
this meeting!

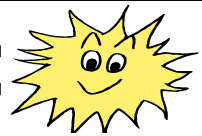
The Bureau of Land Management is hosting public meetings for public input on their Resource Management Plan and Environmental Impact Statement drafts. These drafts, when passed, will affect 274,000 acres of public lands in the Alameda, Contra Costa, Monterey, San Benito, San Mateo, Santa Clara, and Santa Cruz counties, and portions of Fresno, Merced, Stanislaus, and San Joaquin counties. The meeting for our area is December 7 from 6-8 PM at the Dr. Martin Luther King Jr. Library, Room 225, 150 E. San Fernando St., San Jose.

The BLM will be accepting comments on their drafts until January 12, 2006. To mail a comment, please send to the following address: BLM Hollister Field Office, 20 Hamilton Court, Hollister, CA 95023. If you would prefer to email a response, please send it to: Sky\_Murphy@ca.blm.gov. Voice your opinion. Save your favorite collecting sites.

If you would like to know more about these drafts and how they will affect to your favorite collecting area, contact Frank Monez, (408) 578-7067 or frankm2@sbcglobal.net. You may also wish to check out the Bureau of Land Management's Website at [www.ca.blm.gov](http://www.ca.blm.gov).

Interesting websites:  
Dinosaur website =  
[www.dinoruss.com](http://www.dinoruss.com)  
Mineral Website =  
[www.theimage.com](http://www.theimage.com)

SUNSHINE



If you have information concerning any member who is ill, hospitalized, or has had a death in the family, please contact our own Suzi "Sunshine" Papineau, (408) 267-1620.

## Our 2006 Show Committee needs your help!

**Decorations:** Jane Yamashita would like members to think about loaning plants for our show decorations. They always add a touch of class to our displays. Also anything you think might enhance the looks of the plants such as statues or dolls. Be sure and mark them with your name, and Jane will be sure to get them back to you. Rock-themed items always look good, too.

**Security:** George Yamashita would like some volunteers to spend the night either Friday or Saturday night at the show for guard duty. You would just mostly need to sleep there so that we can say someone is on duty. Call George at (408) 353-2982 if you can volunteer for either night.

**Touch and Feel Table:** John Eichhorn is collecting rocks for the touch and feel table. Contact John, (408) 749-0523, if you have something that you would like to share at the show.

**Yard Signs:** Frank Mullaney needs to know the following:

1. Who still has yard signs?
  2. How many of each type do you have?
- Contact Frank (408) 266-1791 if you have any yard signs so that the signs may be updated for the upcoming show.

# SCVGMS Calendar



**December 3** Cutaways meeting  
**December 5** Installation Dinner at 6:00pm at the Three Flames Restaurant. Remember "Toys for Tots" gift.  
**December 8** Board meeting at 7:30 PM at Pat Speece's home, 2357 Loma Park Court, San Jose, CA 95124  
**December 14** Stringers 2 meeting 7-10 at Pat Speece's home.  
**December 15** Stringers 1 meeting 7-10 at Pat Speece's home.  
**January 9** Mineraleers meeting at Chuck Boblenz's home.  
**January 18** Show Meeting at Marc Mulaney's home.  
**January 24** Regular business meeting  
**January 26** Board meeting  
**February 7** Faceters meeting at Bill Norton's home.  
**February 28** Regular business meeting  
**March 2** Board meeting  
**March 28** regular business meeting  
**March 30** Board meeting  
**March 30-31** Show setup  
**April 1-2** Annual Show  
**April 25** Regular business meeting  
**April 27** Board meeting  
**May 23** Regular business meeting  
**May 25** Board meeting  
**June 27** Regular business meeting  
**June 29** Board meeting  
**July 25** Regular business meeting  
**July 27** Board meeting  
**August 22** Regular business meeting  
**August 24** Board meeting  
**September 26** Regular business meeting  
**September 28** Board meeting  
**October 24** Regular business meeting  
**October 26** Board meeting  
**November 28** Regular business meeting  
**November 30** Board meeting

# Picture Jasper

Picture Jasper, because of its unique landscape patterns and wide range of colors, is one of the most interesting and sought after varieties. Picture jasper is petrified or silicified mud. Looking at its patterns, it isn't hard to visualize mud dripping into gas pockets in molten lava, becoming superheated, and then solidifying into this gemstone.

Many varieties of picture jasper are found in Idaho and parts of Oregon. One of the better known picture jaspers is from Owyhee County in southern Idaho and portions of eastern Oregon. A high quality jasper found on the Morrison Ranch in the Owyhees of Oregon is known as Morrisonite.

One of the prettiest and finest jaspers on the market is Willow Creek jasper from the mine of the same name 15 miles north of Boise, Idaho. This jasper is a pastel version of the pink and green Imperial Jasper from Mexico. Willow Creek jasper actually forms as the center of giant thundereggs, some as large as 10 feet in diameter. It is known for its rich pastel colors, streamer patterns, occasional orb patterns, and is a favorite of lapidaries. The Willow Creek Mine is privately owned and has been producing jasper for the past 35+ years.

(Excerpts from Mike Shaw article in Rockhound Gazette 3/02, via the Pegmatite 12/04, via The Tumble Rumble 10/05)

## MAKE A SET OF COASTERS

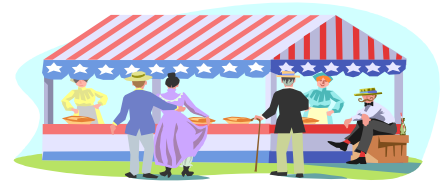
Get out that box of slabs you plan to use someday and blow off the dust. Pick out six that you can trim to four inch squares. Then, round the corners and bevel the edges so that the squares will have smooth edges.

Polish the best side—either on your equipment or by spraying with a waterproof acrylic. Back the other side with self-sticking felt. The thickness of the squares does not have to match.

Finished? You now have a set of six unique coasters in a variety of colors and patterns. Of course if you have a huge supply of slabs and want a matched set of coasters, go for it. They make nice gifts.

Author unknown, from the Post Rock 5/02, via the Rockcollector 9/05, via The Coral Geode 10/05.

# CFMS Show Schedule



**Changes to this calendar are printed in italics. For the latest version of the CFMS Show Schedule go to [www.cfmsinc.org](http://www.cfmsinc.org)**

## 2006 Shows

January 21-22 2006, Exeter, CA Tule Gem & Mineral Society "50th Annual Fabulous Fun-Filled Show" Exeter Veteran's Memorial Building Hwy. 65 Hours: Sat. 10 - 5; Sun. 10 - 4

*January 27-29 2006, Redlands, CA Southern Calif. Micromineralogists 41st. Pacific Micromount Conference 2024 Orange Tree Lane Hours: Fri. 3 -10; Sat. & Sun. 8 - 10 Paul M. Adams (310) 336-6927 Email: [paul.m.adams@aero.org](mailto:paul.m.adams@aero.org)*

February 17-26 2006, Indio, CA San Gorgonio Mineral & Gem Club "Date Festival" Riverside County Fair & Date Festival Gem & Mineral Bldg. #1 , 46-350 Arabia Street, Hours: 10 - 10 daily Gert Grisham (951) 849-1674 E-mail: [grish1@msn.com](mailto:grish1@msn.com)

February 25-26 2006, Antioch, CA Antioch Lapidary Club Contra Costa Co. Fairgrounds 1201 West 10th Street Ellen Bauer (925) 458-2539 Email: [jbauer@wwdb.org](mailto:jbauer@wwdb.org)

*March 3, 4, 5 2006, Hayward, CA Mineral and Gem Society of Castro Valley Centennial Hall, 22292 Foothill Blvd, Hayward, CA Hours: Fri. & Sat. 10am - 6pm Sunday 10am - 5pm Ron Miller (510) 887-9007 Publicity Chair: Larry Ham Email: [mgscev@yahoo.com](mailto:mgscev@yahoo.com) Show website: [www.mgscev.com](http://www.mgscev.com)*

March 4-5 2006, Ventura, CA Ventura Gem & Mineral Society Seaside Park Ventura Co. Fairgrounds Hours: Sat 10-5, Sun 10-4 Jim & Nancy Brace-Thompson (805) 659-3577 Web Site: <http://www.vgms.org>

March 4-5, 2006, Arcadia, CA Monrovia Rockhounds Inc. Los Angeles County Arboretum & Botanical Garden 1 block South of I-210, Foothill Freeway near Santa Anita Race Track 301 North Baldwin Ave. Arcadia, CA 91007 Hours: Sat. 9-4:30, Sun. 9-4:30 Janie Duncan 626-358-8157 Email Jo Anna Ritchey: [j.ritchey@verizon.net](mailto:j.ritchey@verizon.net) Website: [www.moroks.com](http://www.moroks.com)

March 11-12 2006, Salinas, CA Salinas Valley Rock & Gem Club Annual Show, Spreckels Veterans Memorial Bldg. 5th and Llano Street Hours: 10 - 5 both days Jim Bassett (831) 758-5830 Email: [jbmsc@sbcglobal.net](mailto:jbmsc@sbcglobal.net)

March 11-12 2006, San Marino, CA Pasadena Lapidary Society San Marino Masonic Center 3130 Hunting Drive Hours: Sat 10 - 6, Sun 10-5 (626) 355-6964 or (626) 914-5030

April 1-2 2006, San Jose, CA Santa Clara Valley Gem & Mineral Society Santa Clara County Fairgrounds 344 Tully Road Hours: 10 - 5 both days Marc Mullaney 408 - 971-6651 Email [GEOLOGISTM@aol.com](mailto:GEOLOGISTM@aol.com)

April 29-30 2006, Santa Cruz, CA Santa Cruz Mineral & Gem Society Corner of Center & Church Streets Hours: 10 - 5 both days Sallee Brumbaugh (831) 336-5662

May 13-14 2006, Reno, NV Reno Gem & Mineral Society "Jackpot of Gems" Reno Livestock Events Center Exhibit Hall 1350 N. Wells Ave. Hours: Sat. 10 - 5; Sun. 10 - 4 John Peterson

*May 20-21 2006, Newbury Park, CA Conejo Gem & Mineral Club Borchard Park Community Center 190 Reino Rd. Hours: Sat. 9-5 Sun. 10-4:30 Sal Scarpato (818) 707-9972 Email [SALSCARPATO@SBCGLOBAL.NET](mailto:SALSCARPATO@SBCGLOBAL.NET)*

June 3-4 2006, La Habra, CA North Orange County Gem & Mineral Society Jubilee of Gems Show La Habra Community Center 101 W. La Habra Blvd. Hours: 10-5 both days Don Warthen (626) 330-8974 Email: [warthen@earthlink.net](mailto:warthen@earthlink.net)

June 9-11 2006, Angels Camp, CA Calveras Gem & Mineral Society Calveras Co. Fairgrounds Hours: 10-5 daily Website: [calaverasgemandmineral.org](http://calaverasgemandmineral.org)

---

## How Geologic Time Periods Got Those Crazy Names.

The three geologic periods are the Paleozoic, Mesozoic, and Cenozoic, from the Greek for ancient, middle, and recent life. They are divided into 11 periods most of them names for places where rocks from that period were first discovered.

The Cambrian Period (570 to 500 millions years ago) is named for Cambria (or Wales). The next two periods also have Welsh names: Ordovician and Silurian for the two Welsh tribes, the Ordovicians and the Silurians.

The Devonian is named for the Devonshire, and Cretaceous comes from Creta, Latin for chalk. Creta refers to the white cliffs of Dover.

The Jurassic is named for the Jura Mountains in Germany and the Permian for Perm in Russia's Ural Mountains.

The Triassic got its name because it was really divisible into three parts. And the Carboniferous is named of carbon, because most coal deposits date to that period.

The most recent periods are the Tertiary and Quaternary named for types of rocks dated to those times. They are divided into epochs, whose names all end in "cene", a Greek root meaning recent.

Pleistocene is from the Greek for the most recent. Preceding it are the Pliocene, Miocene, Oligocene, Eocene, and Paleocene, for the most recent, less recent, little recent, early recent, and oldest recent.

Via Jax Gems 10/05, via Scribe from Rocket City Rocks, via flint Flashes 9/93

# Safety First— Lifting Safety

## By Bill Klose, AFMS Safety Chair

From the October 2005 AFMS Newsletter

By our very nature of being rock hounds, we get involved with moving heavy specimens and equipment around, in addition to lifting in our day to day lives.

Prior to lifting an item it is a good idea to consider an number of things.

1. How heavy or bulky is the item to be lifted or carried?
2. How good a shape are you in and have you had any back problems in the past after lifting? Many back problems are of a cumulative type, where a repeated minor injury will flare up and become worse.
3. How much space is there around the object to be lifted and how much space is around where it is to be deposited.
4. What kind of obstacles are there along the transportation route, such as trip hazards, holes, overhangs, etc.

If any of these questions create a concern, or if in doubt, get help or use an aid such as a dolly, hand truck or even a fork lift. Statistics show that 80% of back injuries occur in people between 30 and 50.

Be sure to utilize appropriate safety equipment such as safety shoes and work gloves when lifting. The use of back belts, as seen at some stores and outlets, has not been shown to prevent back injuries according to recent studies.

Prior to the lift, make sure you have adequate clearance for your hands and arms. Stand close to the load with your feet apart and toes pointed out to provide firm footing. Bend your knees, not your waist. Grip the load firmly with a "full palm grip". Do not place your fingers under the load. Tighten your stomach muscles and then lift head and shoulders first, and then with your back straight, use the strength of your legs to slowly and smoothly push up. "Jerk Lifting" a load will multiply the stress to your lower back. Keep the load close to your body at all times with your back upright.

Never hold the load away from your body. Make sure you can see over the top of the load. If you should have to change directions with the load, move your whole body with your feet. Do not twist your body which can be especially dangerous for your back.

To raise the load above shoulder height, first lift to waist height and rest on the edge of a ledge, hip or stand, and then shift hand positions so the load can be boosted after the knees are bent. The knees should be straightened as the object is lifted or shifted to the shoulders. If the load is to be placed on a table or shelf, first set it on the edge, and then push it far enough onto the support so it will not fall. The load should be released gradually as it is set down and then pushed into place with your hands in front.

When setting the load down, keep the back straight and upright, bending the knees. Lower the load slowly and smoothly. Don't add the weight of your body to the load.

### Commandments for Safe Driving

1. Thou shalt hold nothing but the steering wheel.
2. Thou shalt not make thee a god of thy horsepower.
3. Thou shalt not take the centerline in vain.
4. Remember the driver behind to let him pass.
5. Honor thy father and mother and thine other passengers.
6. Thou shalt not kill any pedestrian.
7. Thou shalt not commit drunken driving.
8. Thou shalt not steal the neighbors eyes with thy headlights, not their ears with thy horn, or his enjoyment with thy litter.
9. Thou shalt not bear false witness with thy signals.
10. Thou shalt not covet thy neighbor's right of way.

From the September CFMS Newsletter, via Chuck McKie, Safety Chairman, via Mid West Federation by Syl Schlageter Safety Program (date unknown)



# Cinnabar

Via Moroks 10/05, via The Agatizer 2/69

Cinnabar is the only common mineral of mercury and the chief ore. It is a mercury sulfide. It is also the only commercial source, though it has been produced artificially. Cinnabar is a lovely bright red in color when fresh but may fade to a dull gray when exposed to sunlight. The mineral is sometimes mistaken for realgar but has a silvery luster that realgar does not show.

Cinnabar crystallizes in a hexagonal systems and is usually found as a coating which is sometimes crystalline and sometimes earthy. It is also found in sedimentary rocks. Cinnabar occurs usually near volcanoes or hot springs. It is associated with pyrite, marcasite, copper sulfide, stibnite, gold, opal, quartz, and calcite.

Cinnabar can be heated and caused to deposit drops of pure mercury on the cold surfaces of an open test tube. Old Time miners used to do this in elementary stills and would sell the mercury thus obtained. This, however, is a very dangerous thing to do as the fumes are very poisonous and should not be inhaled. Mercury has many uses besides the common one in thermometers. It is used for gold processing, preparing drugs, in scientific machines, and in ammunition.

Cinnabar occurs in Russia, Yugoslavia, Czechoslovakia, Bavaria, and Mexico. Perhaps the finest crystals come from Hunan Province in China where it occurs in fine, deep red, translucent crystals in Quartz. These are also quite commonly twinned. In the United States, California is the leading source of cinnabar. Other sources are Nevada, Utah, Oregon, and Texas.

## Glass Specimen Cover

Wouldn't it be nice to get a cheap clear glass cover for your valuable crystals, minerals, etc., without having a custom-made glass cover? Try this out. At a flea market or yard sale, pick up a few odd wine glasses, large or small, with no patterns etched on them. With your trim saw, cut the stem off as close to the base of the globe as possible. Polish the goblet end to a glass finish, place over your specimen and there you are. No more dust on your specimens. Also, looking down through the cut end magnifies whatever you have under it. The stem can be polished flat to mount anything else you fancy. A word of advise, though. Don't get caught in your wife's china cabinet. She might get a little upset.

Via Show me Rockhounds 9/05, via John Radcliffe on internet, via the Rockpile 1998,

## Little Known Fact

**Pencil points are made from *plumbago* from the Principle World mine at Barrowdale, Cumberland, England. Plumbago is a form of graphite called "black lead". Instead of being worked constantly, the mine is opened once a year and one year's supply is mined. Then the mine is closed with strong doors, bars, and locks until the next year. All the fine pencils in the world have been made from the black lead from this mine since Elizabethan times.**

From Pebbles, Via others, via Stoney Statements 10-94, via Huntin' and Diggin' 11.94, via Backbender Gazette 5/04,

## Shop Hint

**Mineral Oil has many uses. It is fine for preserving borax crystals from Hydration changes. It makes varisite a deeper green, and improves appearance of fluorites and calcites.**

From The Memphis Archaeological Society, via Rocktik, 11/83, via Huntin' and Diggin' 9/94, via Backbender's Gazette 5/04

# Exotic Terrane by Bill Gissler, SCVGMS Member

The geologic term "exotic terrane" refers to a group of rocks, a fragment of a formation, that attaches itself to a tectonic plate and ends up at a new site, totally out of place from its origins.

Video, V-106 available in the CFMS slide and video program library, traces the fascinating history of mysterious rocks in Hells Canyon region on the Oregon-Idaho border and provides an overview of tectonic activity along the Pacific coast. The video is actually two stories. It is first the story of the magnificent mountains along the Oregon-Idaho border. Second, it is the story of the geologists who pieced together the history of these mysterious rocks.

In the early 1960's, Dr. Tracy Vallier began mapping this region for the U.S. Geological Survey and discovered "pillow lavas," which develop only where volcanic lava flows into a large body of water. But Vallier was mapping an area 9000 feet above sea level and 350 miles east of the Pacific Ocean.

Subsequent studies of the paleontology of nearby rocks by Dr. George Stanley, Jr., from the University of Montana, turned up tropical marine fossils, specifically corals. How could it be that marine fossils were being found thousands of feet above sea level in eastern Oregon?

The answer lies in plate tectonics. The Earth's crust is made of separate pieces, called plates, that fit together like a puzzle. The plates are floating on hot, plastic-like material below. Some of the plates are pulling away from each other and some are colliding. Geologists call an area a subduction zone when two plates collide and one sinks under the other. The sinking plate melts and creates magma which then forces its way up through the overlying plate by volcanic action.

Dr. Ellen Bishop, from Eastern Oregon State College, noticed that rock samples dredged up from active subduction zones looked very similar to the rocks she was finding in eastern Oregon. Both were a melange, rocks that were

highly altered and a composite of a variety of materials.

Combining their research, Drs. Vallier, Stanley, and Bishop recreated the geologic history of the Pacific Northwest. Millions of years ago, ocean waves broke on beaches in western Idaho. A portion of a tectonic plate that had formed near the equator broke free, migrated up to, and collided with the North American continent. The collision occurred along a zone near Hells Canyon.

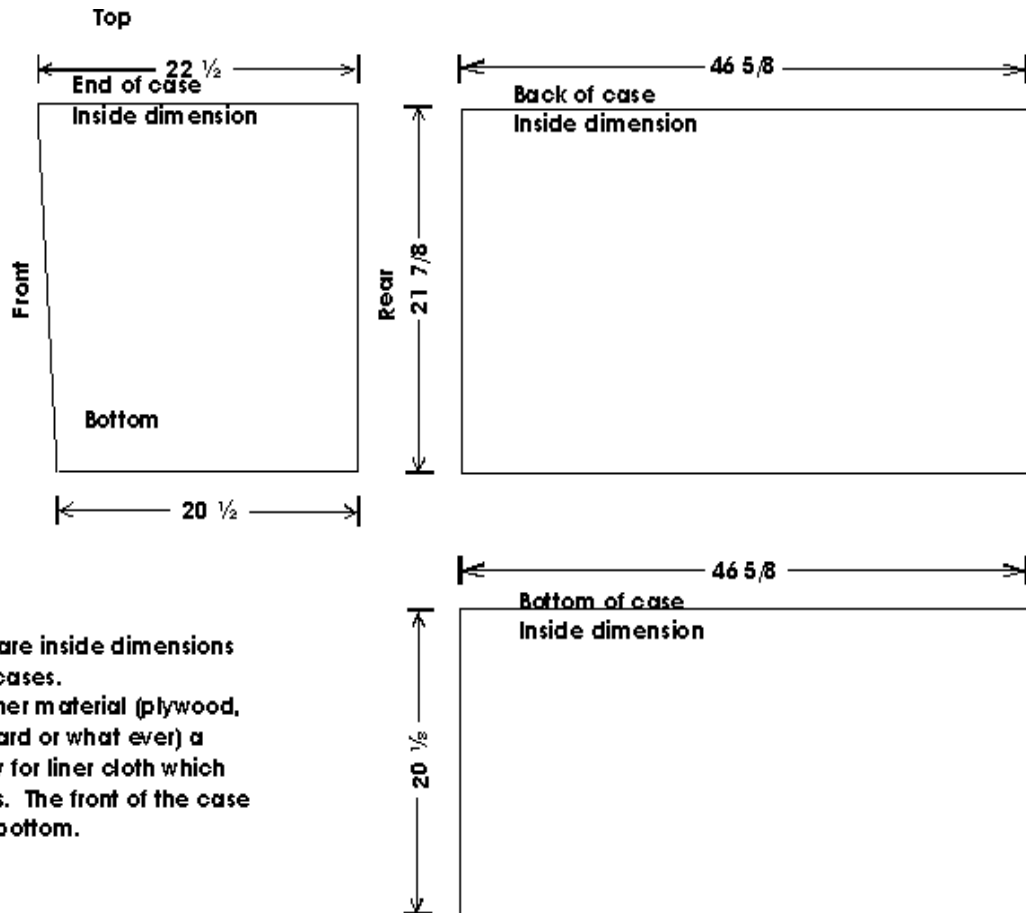
It is now thought that much of western North America did not form as part of the continent. Large parts are made of oceanic islands, coral reefs, and other seafloor fragments. And it is these parts, the EXOTIC TERRANE, which offer geologists such important clues to the past.

Beautiful scenery, computer modeling, discoveries in the field, and narration by John Forsythe combine to create an adventure in science in the video, "The Geology of the Pacific Northwest Exotic Terrane."

## **Trick for Cutting Mexican Jelly Opal** Via The Lithnic 10/05, via The Chiseler 01/05

When cutting Mexican opal with transparent or clear (that's most of it) base color, cut a high dome on the top side and a moderate dome on the back. The reasons are two fold.

1. If you get the top and bottom domes just right, the light will refract within the stone as it does in the properly cut faceted stone. The effect will be as though light is trapped within the stone and the color will "glow" in a seemingly bottomless stone. It works great with or without play of color. Try it.
2. Polishing the back of the opal helps the stone to last longer. A polished surface tends to retard water loss from the opal over time. A rough surface has many times more surface area per given dimensions, than a polished surface, thus increasing the potential for physical and chemical interaction.



**Please note** - these are inside dimensions of our club display cases. You must cut your liner material (plywood, cardboard, hardboard or what ever) a little smaller to allow for liner cloth which folds over the edges. The front of the case slopes inward at the bottom.

## SANTA CLARA VALLEY GEM & MINERAL SOCIETY

### Club Display Case Dimensions

#### Santa Clara Valley Gem and Mineral Society General Meeting minutes November 22, 2005

President John Eichhorn called the meeting to order at 7:50 PM at the Belwood Cabana Club in Los Gatos. Members and guests were welcomed. Minutes were approved as printed in the Breccia. The Board meeting will be directly after this meeting.

**New Members:** Malia Yamashita was presented with her new member packet.

**Hospitality:** There were 40 members and 3 guests in attendance tonight.

**Correspondence:** Several show fliers from other clubs.

**Sunshine:** None.

**PLAC:** See details in the Breccia

**Study Groups:** See details in the Breccia

**Show Report:** Marc Mullaney gave a report on the 2006 show. See details in the Breccia.

**Field Trips:** A Thanksgiving Field Trip to Jade Cove is planned. See the Breccia for further details.

**Member Displays:** There were no member displays due to the silent auction.

**Installation Dinner:** The form is in the November Breccia or on our website. The Installation Dinner will be December 5<sup>th</sup> at The Three Flames Restaurant. No Host cocktails from 6 to 7. Dinner starts at 7. Bring an unwrapped toy for Toys For Tots.

**Program:** The program for tonight is the silent auction.

**Elections:** Elections for officers and directors for 2006 went as follows: President, John Eichhorn; Vice-President, Marc Mullaney; Secretary, Randy Harris; Editor, June Harris; Federation Director, Ruth Bailey; Alternate Federation Director, Frank Monez; Directors, Pat Speece, Larry Moore, Jane Yamashita, Lynn Toschi, and Frank Mullaney; Historian, Anna Windsor. The positions of Treasurer and Parliamentarian were unfilled.

**Auditing Committee:** Ruth Bailey, Rick Kennedy, and Marc Mullaney were appointed to the auditing committee.

Meeting was adjourned at 9:00 PM

Respectfully submitted,  
Randy Harris, Secretary

---

**Santa Clara Valley Gem and Mineral Society  
Board Meeting Minutes  
November 22, 2005**

President John Eichhorn called the meeting to order at 9:15 PM at the Belwood Cabana Club. All board members were present except Chuck Boblenz.

M/ S/ P to postpone reading the minutes of the last meeting until next month.

**Treasurer's Report:** M/S/P to pay the bills.

M/ S/ P to suspend all other business until next month.

M/S/P to adjourn at 9:17 PM

Respectfully submitted,  
Randy Harris, Secretary

---

**SCVGMS TREASURER'S REPORT  
20 November 2005**

<b>Beginning Balance</b>		<b>16,594.20</b>
<b>Receipts</b>		
	06 Show Dealers	2,778.00
	Lasagna Sale	11.00
	Club Patch	<u>2.00</u>
	<b>Sub-total</b>	<b>2,791.00</b>
<b>Disbursements</b>		
	Silversmith's	206.36
	Lasagna Dinner	104.61
	Phone Bill	80.04
	Printing	16.69
	Nov. BRECCIA Printing	38.10
	Officer Pins	<u>36.00</u>
	<b>Sub-total</b>	<b>481.80</b>
<b>Ending Balance</b>		<b>18,903.40</b>

# Santa Clara Valley Gem and Mineral Society 2005

## ELECTED OFFICERS

President: John Eichhorn  
(408) 749-0523  
email: johneichhorn@earthlink.net  
Vice President: Pat Speece  
(408) 266-4327  
email: sparkylarky@sbcglobal.net  
Secretary: Randy Harris  
(831) 438-5150  
email: randysparky234@netscape.net  
Treasurer: Chuck Boblenz  
(408) 734-2473  
email: cboblenz@aol.com  
Editor: June Harris  
(831) 438-5150  
email: Juneconeyharris@yahoo.com  
Federation Director: RK Owen  
(408) 377-5373  
email: rk@owen.sj.ca.us  
Alternate Fed. Director: Frank Monez  
(408) 578-7067  
email: Frankm2@sbcglobal.net  
Directors:  
John Bahr (408) 267-1620  
Don Cox (408) 294-0872  
Marc Mullaney (408) 691-1584  
Lynn Toschi (408) 353-3323  
Jane Yamashita (408) 353-2982  
Historian: Anna Windsor  
(408) 926-8624  
Parliamentarian: Ruth Bailey  
(408) 248-6195  
email: rba51825@aol.com

## COMMITTEE HEADS

Field Trip Coordinator: Jennifer House  
Founder's Day Picnic Food: Randy and June Harris, and  
Jane and George Yamashita  
Founder's Day Picnic Raffle: Pat Speece  
Founder's Day Bingo: John Eichhorn  
Hospitality: Kris and Knut Owen  
Installation Dinner: Kathy McChristian  
Juniors: Gary and Kathy McChristian,  
Mark and Debbie Wartenberg  
Librarians: June Warne and Nancy Boring  
Member Display: Kelly Van Vleck  
PLAC (Public Lands Advisory Committee)  
Frank Monez  
Program: Marc Mullaney  
Refreshments: Montella Lopez  
Sargeant-at-arms: Hershel Boring  
Show 2005: Frank Mullaney  
Show 2006: Marc Mullaney  
Silent Auction: John and Sylvia Palmieri, &  
Adam Yamashita  
Sunshine: Suzi Papineau  
Trailer Custodian: Herb Vogel  
Trophies: Frank Mullaney  
Webmaster: RK Owen

Breccia Crew: Editor: June Harris (juneconeyharris@yahoo.com)  
Editor Address and Phone#: 107 Dell Way, Scotts Valley, CA 95066, (831) 438-5150  
Proofreaders: Randy Harris (Randysparky234@netscape.net) and  
Linda Spencer (LSpencer@best.com)  
Assembly and Mailing Staff: Ruth Bailey and Bill Norton  
Exchange Editor: June Harris, 107 Dell Way, Scotts Valley, CA 95066

Permission to copy is freely granted to American Federation of Mineralogical Societies (AFMS) affiliated clubs when proper credit is given.

Santa Clara Valley Gem and Mineral Society

Send Exchange Bulletins to:

June Harris

107 Dell Way

Scotts Valley, CA 95066



**Please Deliver Promptly**

## **2006 SCVGMS Officers**

**Elections results from the November meeting**

**President: John Eichhorn**

**Vice President: Marc Mullaney**

**Secretary: Randy Harris**

**Treasurer: Open**

**Editor: June Harris**

**Federation Director: Ruth Bailey**

**Alternate Federation Director: Frank Monez**

**Directors:**

**1. Pat Speece**

**2. Larry Moore**

**3. Lynn Toschi**

**4. Jane Yamashita**

**5. Frank Mullaney**

**Historian: Anna Windsor**

**Parliamentarian: Open**