

BRECCIA

Santa Clara Valley Gem and Mineral Society



All American Club

Volume 52, Number 3 San Jose, CA , March, 2005

Breccia

Santa Clara Valley Gem and Mineral Society (SCVGMS)

P.O. Box 54, San Jose, CA 95103-0054

Website: www.scvgms.org

Email: info@scvgms.org

Phone Number (408) 265-1422

An Invitation

This society is pleased to invite guests to attend general meetings, study groups, and field trips. General meetings are normally held the fourth Tuesday of every month at 7:45 PM at 100 Belwood Gateway (The Cabana Club), Los Gatos, CA 95032. Belwood Gateway is just south of Blossom Hill between Leigh Avenue and Harwood.

Society Purpose: The inculcation of a love of rocks and minerals by the furtherance of member's interests in the earth sciences, and by education in all facets of related educational activities with the promotion of good fellowship, proper ethics, and conduct.

Membership Requirements: Attendance at two general meeting within twelve months. This society is a member of California Federation of Mineralogical Societies (CFMS) and is affiliated with the American Federation of Mineralogical Societies (AFMS). Dues are \$10.00 per year.

General Meeting: will be March 22, 05 at the Cabana Club, 100 Belwood Gateway. Los Gatos, CA 95032 at 7:45 PM

Board Meeting: will be March 24, 05 at 7:30 PM Chuck Boblenz, 655 Coleta Court, Sunnyvale, 94085 (408) 734-2473

Study Groups

Stringers: Meet on the Second Thursday of the month. Group led by Pat Speece and Mary Lu Ferrara. For info call Pat (408) 266-4327

Facet Cutters: Meet on the first Tuesday of the month. Group led by Bill Norton, call for info (408) 356-8254.

Carvers: Will start meeting on the third Monday of each month. Contact Herb Vogel (408) 247-1018 for information and details about joining this group

Cutaways: meet on the first Saturday of the month at the Shoup Park Lapidary Shop. Group led by John Eichhorn for more info call (408) 749-0523.

Mineraleers: Meet on the Second Monday of the month. Group is led Chuck Boblenz, call for info (408) 734-2473

Silversmithing: Beginning and Advanced classes are led by Kelly Van Vleck and John Bahr. Call Kelly for info (408) 262-8187.

Juniors: are led by Mark Wartenberg. Outings and get together's are announced at general meetings and via email. Contact Mark Watenberg for more info, (650) 568-6114.

Fossileers: will be meeting quarterly for an outing and a study session. For more info call Gail Matthews (650) 962-9960.

John's Note

The show is approaching quickly!

Everybody needs to participate in what ever capacity you can. Our show is the major fund raiser for all our activities, and the best source of advertising of the club.

If you didn't turn in your committee report, please take the time to prepare it and turn it in at a future meeting. This was supposed to have been done in January, but got lost in the shuffle. We will be skipping any oral reports in the future, if I can help it. I think they cut into the meeting and program time excessively. I would prefer to make a binder of reports available at the meetings to anybody who is interested in reading them. The Owen's tribe deserves a gold star on their report and presentation.

I would like to apologize to our guest speaker Donna Kelly for cutting short her presentation time.

MARCH MEETING ONLY! - Please be prepared to come early and help with the pot luck dinner and petrified wood talk by Walt Wright. Remember ! Dinner starts at 6:30, so come before and lend a hand setting up.

On that same note, we could use any available help setting up for all the regular meetings. We usually are at the Cabana club room , starting the set up by 7:00 pm.

I have several items which needs to be addressed While the meeting is in progress, whether someone is speaking or giving a presentation, please be courteous and give them your undivided attention.

Please refrain from private conversations , group discussions, and wandering around . Our room is small and voices travel a long way.

Also, the member display viewing and snacks are available for your enjoyment after the meeting is adjourned.

Thank you ,

John

Secret Auction Results:

Anna Windsor was our high bidder this month for the Montana agate that Frank Scelzi donated. Anna bid \$10.50. The agate will be available for pickup at the March Meeting

DONATIONS REQUESTED FOR SECRET AUCTION ITEMS. THE ITEMS MAY BE ANY ROCK MATERIAL, TOOLS, MACHINERY, BOOKS, OR ANYTHING ELSE ROCK RELATED. PLEASE BRING YOUR DONATION TO THE REGULAR MEETINGS AND GIVE THEM TO RANDY OR JUNE HARRIS. ALL DONATIONS WILL BE USED AT ONE OF THE FUTURE MEETINGS. PLEASE LABEL THE ITEM WITH YOUR NAME AND ITEM DESCRIPTION/NAME.

The Potluck Dinner originally scheduled for the February Meeting has been postponed to the March Regular Meeting

***Please note the change of meeting schedule and time
Setup 6PM***

Potluck dinner 6:30 PM

Speaker 7:30 -8:30 PM

Business Meeting 8:30- ?

The club will provide the drinks and table service (plates, flatware, napkins, cups), and we are asking the members to bring a dish to share. Please see below to find out what category of food you should bring. **Please make sure that you bring enough food to serve a minimum of 12 servings.**

Last Names starts with:

A-G

H-P

R-Z

Type of food

Salad or vegetable

Main Dish

Dessert

Check out what the study groups are doing!!!



MINERALEERS

The mineraleer's will meet on March 14 at 7:30, Chuck Boblenz home, 655 Coleta Court, Sunnyvale, 94085 (408) 734-2473. Contact Chuck if you would like more information or directions.

Stringers

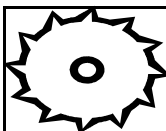


The Stringers will be meeting on March 10 at 7-9 PM at Mary Lu Ferrara's home, 2348 Walnut Grove Avenue, San Jose, CA 95128. They will be making stick pins, hair pins, and hat pins.

Carvers



The Carver's will be meeting on March 21 at 7PM at Herb Vogel's home, 2242 De Paul Place, Santa Clara, Ca 95051 (408) 247-1018. Please bring carving materials and tools, if you have them. Call Herb if you have questions or need directions. Everyone is welcome.



CUTAWAYS

March 5 is the meeting date for the Cutaways group. They will be meeting at 9 AM at Shoup Park in Los Altos. Call John Eichhorn for more information and directions, (408) 749-0523.

Silversmithing



The next beginning silversmithing class will be this summer. If you are interested in participating in this class, contact Kelly Van Vleck at (408) 262-8187 for more information. The classes are 4 weeks in length and meet twice a week.



Facet Cutters

The next two meetings for the Facet Cutters will be meeting on March 1 and May 3 at Bill Norton's home at 7:30 PM. Call Bill for more information at (408) 356-8254. Everyone is welcome.



Fossileers

Debate had been going on all year as to whether there was enough interest for a Fossileer's group and if there was, exactly what it would be doing. Folks expressing interest in the group had diverse ideas, such as petrified wood identification, interest only in collecting field trips and the like.

In an effort to answer these questions a field trip was set up for Dec 12, 2004. This event caught the interest of 6 people and the trip turned out to be perfectly timed. The field trip was to the Natural History of Santa Cruz and to the local beach to observe the geology there. This trip coincided with the open house offered at the museum with free admission, refreshments and a 20% discount in the gift shop. The beach had extraordinarily low tides so there were several layers of fossils to observe. All this was capped off with a wonderful Mexican dinner and discussion about the Fossileers.

For 2005, the Fossileers will meet once a quarter, a seminar on Petrified wood is being coordinated. For the 2nd quarter a field trip to the Buena Vista Museum in Bakersfield with possible collecting is being pursued. Ideas for the last 2 quarters are requested. Call Gail Matthews with any suggestions or to join the study group, (650)962-9960.

Interested in attending a fossil seminar given by Walt Wright on March 24-26? Contact Gail Matthews (650) 962-9960 to reserve your spot. Cost depends on number of people who sign up and the location, but is expected to be \$75.00 or less.

Member Displays by Kelly Van Vleck

Frank Monez said that he and Jim Robertson spent some time on Wednesdays, helping to identify some rocks and minerals at the Evergreen College Museum. He also showed some obsidian he had found, and some Jade pebbles he had found near Patrick's Point at Dry Lagoon, on the beach. Herb Vogel displayed photos taken at the Christmas Party and advised everyone to take any of them they wanted. John Eichhorn displayed several parcels of Apache Tears which he had polished to a beautiful shine.

Jane Yamashita put out a supply of our show brochures for members to take and deliver to various places to advertise our show. Mary Lu Ferrara, Pat Speece, and Suzi Papineau displayed beaded memory wire bracelets and beautiful lapel pins they had made in their beading workshop. John Bahr had a large spread of photos he had taken (and they were also for members to take). He also had a nice collection of things he had collected on some of his hunting trips and some he had purchased during his recent trip to Tucson, Arizona. He had Howlite from Tick Canyon, a piece from a large rock collected Utah, and various beautiful pieces he bought in Tucson. Randy Harris displayed his first ever cabochon that he had cut from a piece of a geode. It was a beautifully crafted 40 x 30 stone. Really well done for a first try at cabbing.

March assignments for Member Display are:
Mary Lu Ferrara, Robert Ferrano, Earnest Foreman, JT Fuller, Misako Fuller, Jennie Gibson
Bill Gissler, Garth Hagen

**March Program will be
given by Mr Walt Wright
on the topic of
"Evolution-
Cambrian to Present"**

SUNSHINE

Rick Kennedy's mother passed away in January. Our heartfelt condolences are given to him and his family.

Clair Rucker has recently moved from his home in San Jose to an assisted living facility in Elk Grove. We hope he is doing well in his new living arrangements.

Sylvia Palmieri was back at our meeting this month and we were all happy to see her there.

If you have information concerning any member who is ill, hospitalized, or has had a death in the family, please contact our own Suzi "Sunshine" Papineau, (408) 267-1620.

**This Year's
Scholarship Recipients
are Jonathan Sleeper and
Sharon Terwilliger. They
will both be presenting a
program at our annual
show and will receive
their scholarship
checks at the show.**

February Program in Review by Marc Mullaney

Our speaker for February 2005 was Donna Kelley. Ms. Kelley is a self-taught flint-knapper who showed how to use the tools, both modern and natural, and how to knap tools. The materials she showed us were obsidian, modern glass, and of course, flint. She started with showing us how to get flakes off of larger stones that we can then work with to make arrow points. She also showed us many examples of her finished work and stayed to answer questions after the meeting.

SCVG&MS Calendar



February 28 Silversmithing class 7-10PM

March 1 Silversmithing class 7-10PM

March 1 Faceter's Meeting at Bill Norton's home 7:30PM.

March 5 Cutaways Meeting 9-12 at Shoup Park (The Peninsula Club's Workshop)

March 7 Silversmithing class 7-10 PM

March 8 Silversmithing class 7-10PM

March 10 Stringer's Meeting 7-9 PM

March 12 Work day/ Pot luck for scholarship booth at Wartenberg's home from 10-4PM

March 12-13 Field Trip to Clear Creek/Baker Museum and Pinnacles.

March 14 Silversmithing class 7-10PM

March 14 Mineraleer's meeting 7:30PM at Chuck Boblenz Home

March 21 Carver's Meeting at Herb Vogel's home at 7PM

March 22 General Mtg at the Cabana Club 100 Belwood Gateway, Los Gatos 7:45 PM

March 24 Board Meeting at 7:30 PM at Chuck Boblenz home, 655 Coleta Court, Sunnyvale 94085, (408) 734-2473

March 26 Rock sale at Wartenberg's home 10-4 PM

March 31 and April 1 Setup for the Show 9-5 at Santa Clara Fairgrounds.

April 2-3 SCVG&MS 50th Annual Show at Santa Clara Valley Fairgrounds, 10-5 both days.

April 14 Stringer's Meeting 7-9 PM

April 26 General Mtg at the Cabana Club 100 Belwood Gateway, Los Gatos 7:45 PM

April 28 Board Meeting at 7:30 PM at RK Owen's home, 5171 Leigh Ave, San Jose 95124 (408) 377-5373

May 3 Faceter's Meeting at Bill Norton's home 7:30 PM

May 24 General Mtg at the Cabana Club, 100 Belwood Gateway, Los Gatos 7:45 PM

May 26 Board Meeting at 7:30 PM at Randy Harris' home, 107 Dell Way, Scotts Valley 95066 (831) 438-5150.

June 28 General Mtg at the Cabana Club 100 Belwood Gateway, Los Gatos 7:45 PM

June 30 Board Meeting at 7:30 PM at Jane Yamashita's home, 24320 Mt Charlie Rd. Los Gatos, 95033 (408) 353-2982.

July 17 Founder's Day Picnic at Belwood Cabana Club

July 26 General Mtg at the Cabana Club 100 Belwood Gateway, Los Gatos 7:45 PM

July 28 Board Meeting at 7:30 PM at Lynn Toschi's,

August 23 General Mtg at the Cabana Club 100 Belwood Gateway, Los Gatos 7:45 PM

August 25 Board Meeting at 7:30 PM at Pat Speece's home 2357 Loma Park Court, San Jose, CA 95124 (408) 266-4327

September 27 General Mtg at the Cabana Club 100 Belwood Gateway, Los Gatos 7:45 PM Nominating committee appointed

September 29 Board Meeting at 7:30 PM at John Bahr's home, 4991 Corbin Ave. San Jose, 95118 (408) 267-1620.

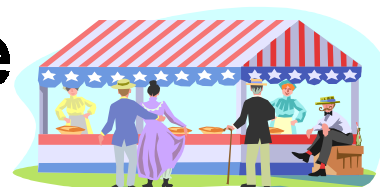
October 25 General Mtg at the Cabana Club 100 Belwood Gateway, Los Gatos 7:45 PM Nominating committee submits 2006 board member nominees.

October 27 Board Meeting at 7:30 PM at Frank Monez's home, 407 Bluefield Dr, San Jose, 95136(408) 578-7067

November 22 General Mtg at the Cabana Club 100 Belwood Gateway, Los Gatos 7:45 PM 2006 Board elections, Board Meeting immediately following general meeting.

CFMS Show Schedule

Changes to this calendar are printed in italics. For the latest version of the CFMS Show Schedule go to www.cfmsinc.org



March 4, 5 & 6 2005, Hayward, CA The Mineral & Gem Society of Castro Valley Centennial Hall, 22292 Foothill Blvd. Hours: Fri, & Sat. 10 - 6; Sun. 10 - 5 Ron Miller (510) 538-2397 Email: mgsev@yahoo.com

March 4 - 13 2005, Imperial, CA Imperial Valley Gem & Mineral Society 200 East 2nd. Street Hours: Mon. - Fri. 4 - 10 PM; Sat. & Sun. 12 - 10 PM Ms. Trey Handy (760) 352-2273

March 5-6 2005, Ventura, CA Ventura Gem & Mineral Society Seaside Park (Ventura Co. Fairgrounds) 10 W. Harbor Blvd. Hours: Sat. 10 - 5; Sun. 10 - 4 Jim Brace-Thompson (805) 659-3577 Email: jbraceth@adelphia.net

March 5-6 2005, Arcadia, CA Monrovia Rockhounds Inc. The Arboretum of Los Angeles County 301 N. Baldwin Avenue Hours: 9 - 5 both days Jo Anna Ritchey (626) 359-1624

March 12-13 2005, Turlock, CA Mother Lode Mineral Society Stanislaus County Fairgrounds 900 N Broadway Hours: 10- 5 Bud McMillin (209) 527-8000 (Wk) or 524-3494 (H) E-mail: Bud.McMillin.b7yj@StateFarm.com

March 12-13 2005, San Marino, CA Pasadena Lapidary Society "Magic From The Earth" San Marino Masonic Center 3130 Huntington Drive Hours: Sat. 10 - 6; Sun. 10 - 5 Marcia Goetz (626) 914-5030 Email: JOENMAR1@GTE.NET

March 19-20 2005, Escondido, CA Palomar Gem & Mineral Club Army National Guard Armory 304 Park Ave., Escondido Hours: Sat. 10- 5 Sun. 10-4 Annie Heffner (760) 735-8067 E-mail: annieheffner@yahoo.com

March 19-20 2005, Angels Camp, CA, Calaveras Gem & Mineral Society Calaveras County Fairgrounds Hours: Sat. 10- 5 Sun. 10-4 Earl Klein (510) 632-9373

April 2-3 2005, San Jose, CA Santa Clara Valley Gem & Mineral Society "Golden 50th. Anniversary Show" Santa Clara County Fairgrounds 344 Tully Road Hours: 10 - 5 both days Frank Mullaney (408) 266-1791 E-mail: info@scvngms.org

April 2-3 2005, Torrance, CA South Bay Lapidary & Mineral Society "Nature's Treasures" Torrance Recreation Center 3341 Torrance Blvd. Hours: 10 - 5 both days Omer Goeden (818) 383-9279 E-mail: sageit@aol.com

April 9-10 2005, Paradise, CA Paradise Gem & Mineral Clug Veteran's Memorial Hall Sky & Elliott HOURS: Sat: 10 - 5; Sun: 10 - 4 Anita Carter (530) 876-9466 Or (530) 872-1983

April 9-10 2005, San Diego, CA San Diego Mineral & Gem Society Al Bahr Shrine Center 5440 Kearny Mesa Rd. Hours: Sat. 9:30 - 5; Sun. 10 - 4 Wayne Moorhead (858) 586-1637

April 9-10 2005, Hacienda Heights, CA Puente Hills Gem & Mineral Club Steinmetz County Park Recreation Building 1545 S. Stimson Avenue Hours: 10 - 5 both days Paula Hess (562) 696-2270 E-mail: rphess@adelphia.net

April 23-24 2005, Lancaster, CA Antelope Valley Gem & Mineral Club Antelope Valley Fairgrounds 2551 West Avenue H Hours: 9 - 5 both days Armin Nimmer (661) 945-5769

April 23-24 2005, Santa Cruz, CA Santa Cruz Mineral & Gem Society Santa Cruz Civic Auditorium Hours: 10 - 5 both days Contact: Hubert Drake (831) 688-8086 E-mail: hmdrake@pacbell.net

April 23-24 2005, Bakersfield, CA Kern County Mineral Society Kern County Fairgrounds Hours: 10 - 5 both days Nichelle Sebresos (661) 809-4705

May 7-8 2005, Reno, NV Reno Gem & Mineral Society Reno Live-stock Events Center Exhibit Hall 1350 N. Wells Avenue Hours: Sat. 10 - 5; Sun. 10 - 4 Jennifer Rhodes (775) 356-8820

May 7-8 2005, Anaheim, CA Searchers Gem & Mineral Society Brookhurst Community Center 2271 W. Crescent Avenue Hours: Sat. 10 - 5; Sun. 10 - 4:30 H. Walter Mroch

May 7-8 2005, Bishop, CA Lone Pine Gem & Mineral Society Tri County Fairgrounds Sierra Street & Fair Drive Hours: Sat. 9 - 5; Sun. 10 - 4 Jeff Lines (760) 872-6597

May 14-15 2005, Yucaipa, CA Yucaipa Valley Gem & Mineral Society Yucaipa Community Center 349 Oak Glen Rd. Hours: Sat. 10-5; Sun. 10-4 Lee Peterson (909) 794-0731 Email: res09ayd@verizon.net

May 14-15 2005, Newbury, CA Conejo Gem & Mineral Club California Gems & Minerals Borchard Park Community Center 190 Reino Rd. Hours: Sat. 9-5; Sun. 10-5 Bob Stultz (805) 498-4220

June 4-5 2005, La Habra, CA North Orange County Gem & Mineral Society Jubilee of Gems Show 101 W. La Habra Blvd. Hours: 10-5 both days Don Warthen (626) 330-8974 Email: warthen@earthlink.net

June 4-5 2005, Glendora, CA Glendora Gems Goddard Middle School 859 E. Sierra Madre Hours: Sat. 10-5 Sun. 10-4 Bonnie Birdwell (626) 963-4638 Email: YBidwell2@aol.com

June 10-12 2005, Roseville, CA CFMS & Roseville Gem & Mineral Blast Roseville (Placer County) Fairgrounds 800 All American (916) 630-1000 Web Site: www.rockrollers.com Show Web Site: www.rockrollers.com/show.html

August 5, 6, 7 2005, Nipomo, CA Orcutt Mineral Society St. Joseph's Church 298 S. Thompson Avenue Hours: 9 - 5 Daily Lucky Virgin (805) 929-4525 Email: lvirgin@impulse.net

September 24 2005, Los Altos, CA Peninsula Gem & Geology Society Rancho Shopping Center Corner of Foothill Expressway & Springer road HOURS: 9:30 - 4:45 Dave Smith (650) 967-7392 E-MAIL: rdsmeks@sbcglobal.net

October 8-9 2005, Trona, CA Searles Lake Gem & Mineral Society 13337 Main Street HOURS: Sat: 7:30 a.m. - 5 p.m.: Sun. 7:30 - 4 Bonnie Fairchild (760) 372-5356 E-MAIL: jbfairchild@verizon.net

Field Trips Show Report

March 12-13 A field trip to the Clear Creek area. Meeting time: 12:00 PM on Los Gatos Coalinga Rd by the San Benito River crossing. We will look along the river bed. If we can't cross the river we will go to the Baker Museum in Coalinga. On Sunday at noon we will meet at the East Entrance of the Pinnacles Park off Highway 25. We will tour the caves at the Pinnacles. These caves are an usually type of caves called "Break Down Caves" because they were created by falling rocks. The first cave is an easy walk. There is camping and lodging in Coalinga, King City, and the Pinnacles Park. Please call Jennifer House at (408) 243-7025 by March 8 if you plan to attend this field trip.

April 2 Field Trip to a Rock Pile (Estate Sale) Location: Sacramento Area. Material: 50 year collection Slabs, Cabs, Specimens and other Rockhound related stuff. Questions, directions and time slots: call Heinz Dreier (415) 457-1113 or email: HeinzDreier@aol.com

April 23 Field Trip to a Rock Pile (Estate Sale) Location: San Rafael Material: Rough material and equipment Questions, directions and time slots: call Heinz Dreier (415) 457-1113 or email: HeinzDreier@aol.com

May 6-8 Synder's 31st Annual Pow Wow 1290 Paloma Rd. Valley Springs, CA 95252 Gems, Minerals, Jewellery, crafts, food, music, field trips, antique, gas engines, radio controlled airplanes, camping. Visit their website at www.valleyspringspowwow.com or email them at Synders@cattle.com or call (209) 772-1265

Our show is coming up fast and your help is greatly needed. Please see below for specific areas that can use your help. Also don't forget to sign up with Suzi Papinaeu to work one or more of the various booths and tables at the show.

SET UP AND TEARDOWN: Frank Monez is looking for people to help with setup on Thursday March 31 and Friday April 1. Everyone is encouraged to help. Starts at 9 AM both days. Everyone is also encouraged to help with tear down on Sunday evening after the show. Many hands make light work.

LUCKY DIP: Rosalies Vogel still needs several more items donated for the lucky dip. Please bring items to the March meeting.

SIGNS: John Bahr needs help with putting up signs and removing them after the show. Any signs needed for the show get them to John Bahr or Frank Mullaney by March 25 or they may not get done.

HOSPITALITY: Suzi Papineau needs people to sign up to work tables and booths.

DEMONSTRATORS: Mary Lu Ferrara still has space available for demonstrators. Contact her if you can help.

SCHOLARSHIP BOOTH: Mark and Debbie Wartenberg are holding a work day to help make items for the scholarship booth on March 12 from 10-4 at their home. They also can use lapidary and earth science magazines, paperback books, and rock material to sell at the scholarship booth. Please bring items to setup day and place at scholarship booth.

DOOR PRIZES: Montella Lopez is still looking for items for door prizes. Please bring your donations to the March meeting.

DISPLAY CASES: Lynn Toschi has only received a few case entry forms and is still looking for more displayer. The seminar to construct case liners was cancelled due to lack of interest, but for the few who signed up, Lynn is available to meet individually to help you develop your own case liner. Please call him for an appointment, to work on a case liner or for a display cases registration form (408) 353-3323. Deadline for Display cases entries is March 10.

GUEST DISPLAYER: Ruth Bailey is still able to add guest displayers to the show. If you have seen a display that you liked at a neighboring show and know the name of the display and would like to see the display at our show, contact Ruth so that she can contact that displayer and request that they enter their display.

SECURITY: Don Cox is still looking for people to help with security both during the show and both nights after the show.

TOUCH AND FEEL TABLE: John Eichhorn needs to know who will be displaying rocks and the types of rocks so that cards can be made for each rock displayed.

DECORATIONS: Jane Yamashita is in need of plants and other decorations. Please bring to setup.

PLAC Report by Frank Monez

Public Lands information comes from many sources. The following article is from the March 2005 issue of the Good Sam Magazine "Highways" page 4. The article is titled "Fees Aren't All Bad, A new government program should help our public lands." and was written by Sue Bray, the Executive Director of the Good Sam Club.

While most of us don't mind paying for something that is of real value, it's difficult to stomach when we are used to getting it for nothing. Nobody enjoys paying for something that used to be free.

And that's the reaction many of us had when Congress passed the Federal Lands Recreation Enhancement Act last November.

But wait. Before we start jumping to conclusions, it's not all bad.

This new fee program actually replaces the National Fee Demonstration Program and covers five federal agencies' properties—the National Park Service, the Bureau of Land Management, the U.S. Forest Service, the U.S. Army Corps of Engineers and the Bureau of Reclamation—extending their abilities to charge usage and access fees for the next 10 years. Rep. Ralph Regula of Ohio sponsored the bill.

Last spring, I testified before the U.S. Senate Subcommittee for Public Lands regarding these issues and many of the provisions I suggested have been included in the final version of the bill. While leaving much of the authority to the discretion of the U.S. Secretary of the Interior, the new bill requires that 80% of the fees collected must remain at the local site where it must be used to improve visitor experiences.

Fee cannot be charged for driving, hiking or picnicking on federal lands when people are not using facilities or services, or for stopping at overlooks and pullouts or for camping on undeveloped sites. In addition, children and school groups cannot be charged entrance fees.

A new national interagency pass, "America the Beautiful—the National Parks and Federal Recreation Lands Pass", will replace the various passes the federal agencies have previously offered. Although a fee has not been established for the new pass, people over age 62 will be able to buy a lifetime America the Beautiful Pass for only \$10.00, and it will be issued free those with disabilities. Those who already have a valid Golden Eagle, Golden Age, Golden Access, or National Parks passport are not affected—those passes will remain in effect.

Public involvement is encouraged—there's even an annual contest to design the America the Beautiful Pass. The bill also requires that states and

regions establish local Recreation Resources Advisory committees comprised of citizens representing a variety of recreational and land-use interests and who will advise the Secretary on what fees may be appropriate and, more importantly, how the money collected should be spent in their local areas.

Especially appropriate to thousands of Good Sam Club members who volunteer to serve on our public lands each year, the Secretary may waive or discount fees or even issue you a free America the Beautiful Pass as a reward for your hard work. The local parks may also choose to offer you discounted or free admission days at their discretion.

Whether or not the public should be paying recreation fees for access to our own lands is a highly controversial and often emotional issue. As much as we would like to have free access to our public lands, the government is just not going to fund them to the degree that is needed. Access fees are, unfortunately, the solution and are probably the best way we can ensure that we even have access to our federal lands in the future.

While many of the provisions of this legislation remain in the hands of the Secretary of Interior, it does set much stronger and more uniform guidelines than we have seen in the past. It remains to be seen how the federal government will implement this new law.

Would you like more information on the "America the Beautiful" program.

Check out the following websites:

<http://www.wildwilderness.org/docs/therat.htm>

<http://www.sespewild.org/HR3283analysis.html>

http://www.planetjrh.com/klobnak_2004_12_01_pay.html

http://www.traditionalmountaineering.org/News_FeeDemo_Permanent.htm

<http://www.americantrails.org/NewsAction/feedemo04.html>

<http://www.aznofee.org/aznofee/home.php>

Notice of a vote to change the Articles of Incorporation. The vote will take place at the March 22 Meeting

Below is a note from the Board explaining the need for the changes and the suggested changes. Please be at our March 22 meeting to discuss these changes and vote.

We have received a reply from the Internal Revenue Service regarding our application for a change in our Non-profit status. They have requested that we include a statement of purpose in our Articles of Incorporation. The Board would like to propose the following changes to our Articles of Incorporation to comply with their request.

Old Article II Object

This Society is established for the following purposes: To inculcate in its members and the community an interest and appreciation for rocks and minerals by furthering their knowledge of the earth sciences by dissemination of the knowledge, methods and procedures for the collection, identification, cutting, polishing, setting, and mounting of rock and mineral specimens; and to promote good fellowship, proper ethics and conduct, and the relations of the members with each other, with the community, and with members of other earth science societies in the pursuance of these activities.

Proposed Article II Purpose

Said corporation is organized exclusively for charitable, religious and educational purposes, including, for such purposes, the making of distributions to organizations under Section 501 (c)(3).

We further suggest that the original paragraph on the objects of the Society be incorporated in the History section of our Handbook.

Tips and Hints:

Reprinted from the Sooner Rockologist, 2/05 edition
If your soft plastic safety goggles are scratched or foggy, try toothpaste and only a little elbow grease, It works super.

Source: Gem City Rock News 4/04, author unknown

Lapidary tip: To identify and grind out pits in the cabochon, spray the rough cab with red enamel from an aerosol can, then grind the paint off with a light touch. Pits and lines will stand out as bright spots, making it unnecessary to wipe the cab so see if the pits are out. This is especially helpful when grinding free form cabs from Fire Agate.

Source: The Petrified Digest 1/99

SWAPPING MATERIALS by Michael Kessler

EFMLS Region II Vice President, Article reprinted from AFMS Newsletter February 05

I have been trying to find people who are interested in trading specimens through the mail. I started a Federation Box Swap some time ago in my region of New York and New Jersey. Many clubs weren't interested because they shared the same sites. It was suggested that I try clubs outside the region, and that is the reason for this article.

The plan was to have a club, or a member, pack a box with self-collected mineral specimens, labeled, and ready to travel. The total weight should be as close to ten pounds as possible. When the package is ready for mailing, contact me for the address to be placed on that package and I will give your address to those mailing theirs out. I have two boxes waiting so far from New York, New Jersey and Pennsylvania. See if someone may be interested, and please let me know.

Specimens, such as these, could be used for prizes, for raffles, or for auctions. Remember to inform those involved that the specimens should be cushioned for travel, and should be of a quality that they would also like to receive. I am only accepting boxes from members of AFMS Clubs. Anyone interested, please contact

Michael Kessler

EFMLS Region II Vice President

<quartz7228@aol.com>

4 Longfellow Road

East Stroudsburg, PA 18301

Shake Rattle and Roll by June Harris

Are you ready for the next big earthquake?

What your First Aid Kit should have in it and where you should keep one.

What should be in your car and office.

Are you ready for the next big earthquake? It's only a matter of time before we are hit again. Are you and your family prepared in the event of an emergency? A first aid kit should be something that everyone should have. Many people have them, but they have been opened, items used and not replaced, or maybe your supplies are out of date and need replacing. First aid kits need to be stored where they are accessible during an emergency. Storing them in a cabinet in the bathroom, might be a poor idea. In the event of an earthquake, depending on the severity of it, it might take you a while to be able to get to that cabinet in the bathroom and find the first aid kit. It's best to have several. One in your emergency equipment that you store in a container in your yard (away from any buildings, trees, power lines, or other obstacles) another survival kit for each of your vehicles, another survival kit for your place of employment. All of your first aid kits need to be checked every 6 months and supplies need to be rotated. First aid kits that are stored in cars are especially vulnerable due to excessive heat. A good time to check your first aid kits, is when you reset your clocks for the time change in the spring and fall.

What should your first aid kit have in it?

Antibiotic Ointment
Medications for all Family Members
Aspirin and/or Pain Relief Medication
Diarrhea Medication
Eye Drops
Cold/Cough Medicine
Benadryl
Insect Spray
Ear and Nose Drops
Hydrogen Peroxide
Skin disinfectant Spray
Extra Prescription Medication
Old Pair of Prescription Eyeglasses for Spare
Band-aids
Medical Latex Gloves
Surgical Mask
Instant Cold Packs
Instant Hot Packs
Ace Bandages
Butterfly Bandages
Gauze Pads
Cotton Swabs
Adhesive Tape
2" and 4" wide sterile bandage rolls

Triangular bandage for sling, etc. (37"X37"x52")
Tongue Depressors (Pop-sickle sticks)
Splint Material
Spray Bottle with 10% Bleach Solution for Disinfecting objects
Red Cross First Aid Manual

What should be kept in your car as a mobile survival kit?

Nylon Carrying Bag or day pack
Bottled Water
Non perishable Food
Can Opener
Transistor Radio and Extra Batteries
Flashlight and Extra Batteries
First Aid Kit
Gloves
Essential Medication
Blanket, Sleeping Bags, Space Blanket
Sealable Plastic Bags
Pre-moistened Towellettes
Small Tool Kit
Matches and lighter
Walking Shoes and Extra Socks
Change of Clothes
Jacket
Cash (Small Denominations and coins)

What should be kept at work? Your work survival kit should be small and portable. Keep it in a day pack.

You need to be able to carry it in the event that you are evacuated to another location.

Dry Food –Candy bars, dried fruit, jerky, cookies, crackers, etc.

Drinks– Water or orange juice

Walking shoes and socks

First aid kit

Routine Medications

Extra Prescription medications

Flashlight with extra batteries

Chemical Light Sticks

Matches

Small Battery powered Radio/ Extra Batteries

Toiletries/Personal Hygiene Items

Entertainment Pack, Family Photos, Notebooks, Reading Material and games.

Remember you could be stranded for up to 72 hours.

Make sure your supplies are adequate to meet your needs. How prepared are you and your family?

Information for this article was taken from the Los Angeles City Fire Department's Earthquake Preparedness Handbook

REPORT ON A RECENT COURT DECISION

by Jim Strain, California Federation

Reprinted from the AFMS March 05 Newsletter

On December 30, 2004, Susan Illston, a U S District Court Judge, signed an order restricting OHV use in desert washes which had been open as a result of years of careful planning. Based on litigation filed by the Center for Biological Diversity, et. al., the judge ruled that the Biological Opinion issued by the U S Fish & Wildlife Service was inadequate. She determined that off-road vehicle travel down some desert washes might harm desert tortoise habitat or disturb a tortoise.

Having served on the various planning commissions, committees, and groups for more than 30 years, there is no question that all safeguards possible have been put in place to assure protection for the tortoise while recognizing the needs of the public. This order ignores the needs of the public.

What does this decision mean to CFMS and its members. Primarily, it may deny access to some of our favorite collecting areas. One area in particular is the Hauser Geode Bed Area. Our Memorandum of Understanding with the Bureau of Land Management is still in place. We can access the geode beds down the existing designated routes of travel. If the designated route travels down a desert wash for a short distance, the route will remain open. If you are traveling down a designated route and turn off of the route to travel down a wash, you may be in violation. The maximum fine could be \$1,000.00 and a maximum jail time of 12 months.

Please remember that our agreement requires that one side of any hole we dig must be tapered to a 30° angle to allow any desert tortoise that might fall into a hole to walk out of the hole. This was to keep from having to refill the hole every time we dug one.

Another issue in the litigation was a request to limit off road vehicle travel and/or camping to 15 feet from the center of the route of travel. Fortunately the judge recognized that request as an attempt to misuse the courts to manage federal land. She denied the request. However, she did uphold a decision made, based on previous litigation, which will reduce the current limit on camping from 300 feet from the center of the route of travel to 100 feet. Apparently some BLM personnel are quoting the 100 foot limitation as being in place now. By camping within the 100 foot limit no request to move a camp site should occur. This decision by the judge will remain in effect until after the new Biological Opinion is issued by U S Fish & Wildlife Service. My guess is that when the new opinion is issued additional litigation will be initiated by someone or some group.

Kanifers– Ever heard of them?

...Hardness is dependent on the crystal structure of the mineral. The more compact the atoms, the greater the binding force between the atoms, and therefore the greater the amount of force needed to separate the atoms.

Hardness varies, sometimes in spectacular fashion, when measured in several different directions on the same crystal.

Diamond: Diamond cutters orient the stone to be cut so that the "soft" directions will come in contact with the randomly-arranged diamond crystals on the cutting wheel. Some of these crystals will be in the "hard" orientation—these are the ones which will be able to cut the diamond.

"Kanifers" (Means "can not do") are twined diamond crystals which have no "soft" directions, hence cannot be cut.

Taken from an article entitled "Hardness", by Edward D. Conner, M.D. in High Country Gleamings 11/96, via The Mineral Mite 12/96, via Pick & Pack 2/97, via Show Me Rock hounds 2/05

Fossil Websites

From CFMS Feb 2005 Newsletter, Article by Jim Brace, Juniors Activities Chair

Interesting Links on the Web.

www.isgs.uiuc.edu/dinos/

www.dearch4dinosaurs.com

www.fossilnews.com

www.geo.ucalgary.ca/~macrae/Burgess_Shale/

www.Paleoportal.org

Reprinted from The Matrix Feb 2005

Shop Tip:

Opalized Wood is extremely brittle. Clamp it and slab it with care, exerting as little pressure as possible. This is a heat sensitive material and should be kept wet and cool at all times while working. A drum sander or horizontal lap works better for removing saw marks than grinding wheels. Cerium oxide, tin oxide, or Linde A on a moist felt buff will bring a mirror polish. It is not usually precious opal but do remember that opalized wood is opal.

Via The Rollin'Rock 2/05, via Rockhound Rambling 1/99, via Lapdiary Journal 2/98

Did you Know???

Back in the Days when Paul Revere's silver shop was not heated, his apprentices and helpers, like most people of that period, donned their winter underwear at the first fall chill and neither removed it or washed it until it was too hot to stand it.

Over this time the daily dust of silver accumulated in the fibers of the material. In the spring, the now-heavy underwear was burned, for many reasons, and the silver was reclaimed. This is how we got the term "Long John Silver."

Article written by Ted Markos, reprinted via The Mountain Gem 2/05, via the Chiseler 10/03

**Santa Clara Valley Gem & Mineral Society
General Meeting Minutes
February 22, 2005**

President John Eichhorn called the meeting to order at 7:45 PM at the Belwood Cabana Club in Los Gatos. Members and guests were welcomed and invited to stay for refreshments after the meeting. The minutes for January 25, 2005 were approved as printed in the Breccia.

New Members: None.

Executive Board: Meeting will be Thursday February 24, 2005 at Pat Speece's home.

Hospitality: Guests were introduced and welcomed. There were 51 members and 8 guests in attendance.

Correspondence: Show fliers from Roseville, Calaveras, Trinity Clubs and Snyder's Pow Wow. A letter was received from AFMS acknowledging \$50 donation from Ruth Bailey in memory of Bob Cranston. A letter was received from Peninsula Library System requesting updated club information. A postcard was received from St. Louis, Mo. club regarding their 2005 show.

Sunshine: details in the Breccia.

PLAC: details in the Breccia.

Field Trips: details in the Breccia.

Study Groups: details in the Breccia.

Committee Reports: 2004 Committee Chairpersons and Officers gave their final reports on each Committee or Office.

Scholarship: San Jose State students Jonathan Sleeper and Sharon Terwilliger were introduced as our 2005 scholarship recipients.

Member Displays: details in the Breccia.

Program: Marc Mullaney invited Donna Kelly to give a demonstration on flint knapping. Walt Wright will be at the March meeting to speak on the subject of petrified wood.

Pot Luck: The potluck dinner has been rescheduled for March meeting at 6:30 PM. See Breccia for more details.

Meeting was adjourned at 9:30 PM. Everyone enjoyed refreshments.

Respectfully submitted,

Randy Harris,
Secretary

**Santa Clara Valley Gem & Mineral Society
Board Meeting Minutes
February 24, 2005**

President John Eichhorn called the meeting to order at 7:38 PM at Pat Speece's home. All board members were present except for RK Owen and Jane Yamashita. Minutes were approved as read.

Treasurers Report: M/ S/ P to pay the bills.

New Member Applications: None.

Correspondence: Jenny Gibson sent a note and dues for 2005. M/ S/ P to refund the \$5 that she overpaid. There is a new address for the Peninsula club.

Sunshine: details in the Breccia.

PLAC: details in the Breccia.

Committee Reports: Ruth Bailey gave a report on our attempt to gain 501(c)(3) status.

M/ S/ P to print an article in the Breccia. **There will be a vote on proposed changes to the Articles of Incorporation at the March regular meeting.**

Unfinished Business:

Discussion about a questionnaire for new members and current members was tabled until next meeting.

Chuck Boblenz gave a report on the cost of membership and how much is subsidized by the club. Discussion ensued about the club goals and the possibility of starting a shop.

Chuck Boblenz presented a report on how much it would cost to do a show at Santa Clara Convention Center.

Walt Wright's upcoming seminar on petrified wood identification was discussed.

New Business: There was discussion of the regular meeting and the lack of time allowed for the flint knapping demonstration. The secretary was directed to draft a letter of apology to Donna Kelly on behalf of the board for not giving her enough time to do her presentation. It was also stated that annual committee chair and officer reports should be written.

Founders Day Picnic: Tentatively the second or third weekend in July.

M/ S/ P to adjourn at 10:20 PM.

Pat Speece served delicious refreshments that were enjoyed by all.

Respectfully submitted,

SCVGMS Treasurer's Report
February 23, 2005

Balance Forward				\$19,042.82
Receipts				
	Dues	10.00		
	Show Dealers	451.00		
	Lucky Dip Refund	50.00		
	Subtotal		511.00	19,553.82
Disbursements				
Approved				
	Show: Publicity	2,784.00		
	President's Award	37.84		
	Audit Report Printing	5.30		
	Breccia Postage	72.42		
	Meeting Refreshments	29.54		
	Calif. State Museum	109.00		
	Subtotal		3,038.10	
To Be Approved				
	Show: Publicity	406.31		
	Show: Insurance	180.00		
	Breccia Printing	64.00		
	Hall Rent: Dec, Jan, Feb	150.00		
	Speaker Fee: Feb	35.00		
	Breccia Postage	36.00		
	Meeting Refreshments	30.84		
	Phone Bill: Dec, Jan, Feb	59.87		
	Subtotal		4,000.12	
Ending Balance				\$15,553.70

Santa Clara Valley Gem and Mineral Society 2005

ELECTED OFFICERS

President: John Eichhorn
(408) 749- 0523
email: johneichhorn@earthlink.net
Vice President: Pat Speece
(408) 266-4327
email: pspeece@sbcglobal.net
Secretary: Randy Harris
(831) 438-5150
email: randysparky234@netscape.net
Treasurer: Chuck Boblenz
(408) 734-2473
email: cboblenz@aol.com
Editor: June Harris
(831) 438-5150
email: Juneconeyharris@yahoo.com
Federation Director: RK Owen
(408) 377-5373
email: rk@owen.sj.ca.us
Alternate Fed. Director: Frank Monez
(408) 578-7067
email: Frankm2@sbcglobal.net
Directors:
John Bahr (408) 267-1620
Don Cox (408) 294-0872
Marc Mullaney (408) 691-1584
Lynn Toschi (408) 353-3323
Jane Yamashita (408) 353-2982
Historian: Anna Windsor
(408) 926-8624
Parliamentarian: Ruth Bailey
(408) 248 6195
email: rba51825@aol.com

COMMITTEE HEADS

Field Trip Coordinator: Jennifer House
Founder's Day Picnic Food: Randy and June Harris, and
Jane and George Yamashita
Founder's Day Picnic Raffle: Pat Speece
Founder's Day Bingo: John Eichhorn
Hospitality: Kris and Knut Owen
Installation Dinner: Kathy McChristian
Juniors: Gary and Kathy McChristian,
Mark and Debbie Wartenberg
Librarians: June Warne and Nancy Boring
Member Display: Kelly Van Vleck
PLAC (Public Lands Advisory Committee)
Frank Monez
Program: Marc Mullaney
Refreshments: Montella Lopez
Sargeant-at-arms: Hershal Boring
Show 2005: Frank Mullaney
Show 2006: Open
Silent Auction: John and Sylvia Palmieri, &
Adam Yamashita
Sunshine: Suzi Papineau
Trailer Custodian: Herb Vogel
Trophies: Frank Mullaney
Webmaster: RK Owen

If you are interested
In being the
2006 Show Chairman
Contact John Eichhorn

Breccia Crew: Editor June Harris (juneconeyharris@yahoo.com)
Editor Address and Phone#: 107 Dell Way, Scotts Valley CA 95066, (831) 438-5150
Proofreader: Randy Harris (Randysparky234@netscape.net)
Assembly and Mailing Staff: Ruth Bailey and Bill Norton
Exchange Editor: June Harris, 107 Dell Way, Scotts Valley, CA 95066

Permission to copy is freely granted to American Federation of Mineralogical Societies (AFMS) affiliated clubs when proper credit is given.

Santa Clara Valley Gem and Mineral Society

Please Send Exchange Bulletins to:

June Harris

107 Dell Way

Scotts Valley, CA 95066



Please Deliver Promptly

Chemical Weathering Experiment:

This would be a fun project to share with your children or grand children:

Supplies Needed: vinegar, empty glass jar, and small limestone rock

Procedure:

- A. Put the limestone rock into the glass jar.
- B. Pour Vinegar in the jar and cover
- C. Watch the limestone rock dissolve. You will see bubbles coming out of the rock.
- D. Let the jar set overnight
- E. In the morning, look at the rock. Does it look smaller? Swirl the vinegar around in the jar. Do you see the powdery sediment? It came from the rock
- F. Add more vinegar to the jar.
- G. Study the rock again a few days later. The vinegar should have evaporated. What do you see now? I found crystals in my jar. It was a baby stalagmite.

By Christine Vasper, from The Post Rock 12/04: Exploring Creation with General Science by Dr. Jay Wile. Reprinted from the Sooner Rockologist 02/2005 edition