

Breccia

Santa Clara Valley Gem and Mineral Society (SCVGMS)

P.O. Box 54, San Jose, CA 95103-0054

Website:

Email Address:

Phone Number (408) 265-1422

An Invitation

This society is pleased to invite guests to attend general meetings, study groups, and field trips. General meetings are normally held the fourth Tuesday of every month at 7:45 PM at 100 Belwood Gateway (The Cabana Club), Los Gatos, CA 95032. Belwood Gateway is just south of Blossom Hill between Leigh Avenue and Harwood.

Society Purpose: The inculcation of a love of rocks and minerals by the furtherance of member's interests in the earth sciences, and by education in all facets of related educational activities with the promotion of good fellowship, proper ethics, and conduct.

Membership Requirements: Attendance at two general meeting within twelve months. This society is a member of California Federation of Mineralogical Societies (CFMS) and is affiliated with the American Federation of Mineralogical Societies (AFMS). Dues are \$10.00 per year.

General Meeting: will be the installation dinner at the Three Flames Restaurant on December 7 at 7:00 PM.

Board Meeting: will be December 9, 04 at Ruth Bailey's 2857 Addison Place, Santa Clara (408) 248-6195 at 7:30 PM

Study Groups

Stringers: Next meeting will be on December 9 at Pat Speece's Home from 7-9 PM. For more information on the Stringers call Pat at (408) 266-4327

Facet Cutters: Next meeting will be February 3, 2005. Place and time to determined. Call Bill Norton for more information, (408) 356-8245.

Mineraleers: Next meeting will be in January. For more information on the mineraleers, call Chuck Boblenz.(408) 734-2473

Silversmithing: The next silversmithing class will begin in February. Sign up with Kelly Van Vleck., (408) 262-8187.

Juniors: Meeting are announced at general club meetings and via email. For more information call Mark Wartenberg (650) 568-6114

Carvers: Have not announced next meeting

Cutaways: Have not announced next meeting.

Fossileers: Will have a field trip to the Natural History Museum of Santa Cruz and the Capitola Beach on December 12. See article on page 4 for more information.

Marc's Message

Another year is coming to a close and by the time you read this we will have a new group of officers guiding our Society through 2005. I urge everyone of you to support the club with your time. Attend the study groups, classes, field trips and more importantly participate in the many committees that keep our club running throughout the year. John Eichhorn will be asking you to participate in these committee functions and to help you decide what job you may want to help with is a job book with descriptions of all the positions. Most positions only take a few minutes a month (literally) and I have performed all but a few. As a Past President I can only urge you to accept a position to help your Society so we can get off to a fast start in improving our Society and getting other issues resolved. Lastly, all officers, board members, and committee chairs must have a annual report prepared for the annual meeting (January meeting). This can be oral or a written report of a few sentences. Thank you for everyone's help this past year and I look forward to working with everyone in 2005.

Congratulations to the recently elected 2005 SCVGMS

Board Members

President: John Eichhorn

Vice President: Pat Speece

Secretary: Randy Harris

Treasurer: Chuck Boblenz

Editor: June Harris

Federation Director: RK Owen

Alternate Fed. Director: Frank Monez

Board of Directors:

1. Marc Mullaney

2. John Bahr

3. Don Cox

4. Lynn Toschi

5. Jane Yamashita

Historian: Anna Windsor

Parliamentarian: Ruth Bailey

June's Jabberings

I'm not sure many of you realize the current costs involved with putting out a newsletter. There are several:

1. Cost of Printing
2. Cost of our bulk mail permit
3. Cost of postage

As of this month, we no longer have a low cost printer available to our club. This means that we will have to pay to have our newsletter printed each month. As of today the lowest bid for printing is 4.5 cents per copy per side plus tax. That is about 89 cents per Breccia per month. There is the postage cost which will run about 60 cents per Breccia. So, it will end up costing the club about \$1.50 per member each and every month to publish and mail. That's 18.00 per year for each member to have a Breccia delivered to their home each year. Undoubtedly, something will have to be done to help offset the cost.

We do have two other possible methods of delivery available that doesn't cost the club anything. Both methods require internet access. One is that I can email the Breccia to you. You then can save it on your computer and have it accessible to you anytime you want. The other method is that I email you and let you know that it has been placed on our new website. The web address is www.scvgms.org. I know that some of you are worried about virus problems and the internet. I have been assured that our webhost has adequate virus protection and the threat of downloading a virus from our website is practically nonexistent.

To our exchange club's, we are having to make some drastic changes to our method of delivery of the exchange bulletins. I am almost positive that we will only be able to continue exchanging bulletins with clubs who have the ability to accept our bulletin via the internet. At our next board meeting we will be discussing what will need to be done.

Please contact me at the following address Juneconeys@harris@yahoo.com. I need the name of your editor, your club name, and email address to sent the Breccia. Also I need to know if you want the PDF form of the Breccia or to download it from the website. For our own members, an email to me to add you to our email list would be appreciated.

In closing, I regret having to take what I'm sure will be perceived as drastic measures, but I really don't see how we can afford to continue any other way. I'll keep everyone up-to-date on any changes. I hope everyone has a terrific holiday season.

Thanks, June
Juneconeys@harris@yahoo.com

Check out what our study groups are doing!!




MINERALEERS

The Mineraleer's will resume meetings in January. Contact Chuck Boblenz for more information about meeting date, time, place and subject.

Silver Smithing



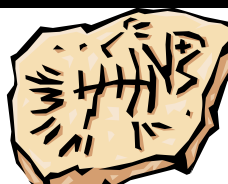
At our last meeting, Kelly Van Vleck announced that the next silversmithing class will probably starting the first week of February. This will be a beginner's class. Contact Kelly if you are interested in joining this class or future classes in advanced silversmithing.



Facet Cutters

The Facet Cutters will resume meetings on February 3, 2005. Place and time to be determined. Call Bill Norton for more information.

Fossileers



The Fossileer's will be having a field trip on December 12 to the Natural History Museum of Santa Cruz and they will also go to Capitola for a guided walking tour at the beach. The Cost for the museum is \$2.50 for adults, \$1.50 for Seniors and children are free. For those club members wishing to attend this field trip, please contact Gail Matthews at (650) 962-9960 and meet on Dec. 12 at the Cabana Club at 12 Noon. Following the excursion to the beach, the group will go to Carpo's for dinner and have an informal discussion about the direction of the group. Remember to call Gail if you wish to attend this field trip.

Stringers



The Stringers each made a single-strand bracelet using a clasp, bead tips, beads and spacers, needle, thread, glue, and round nose pliers. Nancy Boring, Ernestine Smith, June Warne, Jane Yamashita, Suzi Papineau, and Kathy McChristian each made a lovely unique bracelet with beads, styles, and colors of their own choosing.

We'll meet again the second Thursday of December (December 9, 2004) for a work/gab session at the Speece home from 7-9pm. Our next lesson meeting will be the second Thursday in January (January 13, 2005) from 7-9pm. Location to be announced later.

Project Two in January is a two-strand bracelet, using French wire as well as two needles. For information, please call Pat Speece at 408-266-4327.

***** Show Help Needed: *****

Lucky Dip: Rosalies Vogel is looking for prizes for the Lucky Dip booth. Contact Rosalies Vogel if you'd like to donate.

Scholarship Booth: Mark and Debbie Wartenberg will be having work days in January and February, to prepare material for the scholarship booth. If you are interested in helping them on these work days contact Mark or Debbie. Also if you have rock material or supplies, magazines, book, collections, etc that you would like to donate to the scholarship booth contact Marc. Please be prepared to bring your donations to the show in April.

Door Prizes: Contact Montella Lopez if you have anything you would like to donate for door prizes.

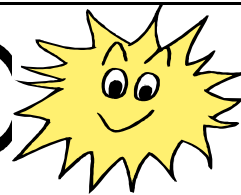
New Members

We have two new members this month. Please make them feel welcome and invite them to a study group meeting. The new members are:

1. Dee Stople, 5716 Ladner Dr. San Jose, CA 95123-3419. Dee is interested in Carving, Wire Wrapping, and Jewelry Making.
2. Jesus C. Ruiz, 477 Blossom Hill Rd, San Jose, CA 95123. Jesus is interested in Cutting and Polishing, Collecting, Silversmithing, Fossils, and Carving.

Welcome, Join a study group and get to know everyone.

SUNSHINE



Sylvia Palmieri is home, but will be having more testing soon. Lon Mullaney is currently stationed in Baghdad. Our thoughts and prayers are with Sylvia and Lon during these times of illness and war.

If you have information on any member who is ill, hospitalized, or has had a death in the family please contact of own Suzi "Sunshine" Papineau, (408) 267-1620.

Take a Look!!!

Book: *Within the Stone*

By Bill Atkinson

179 Pages Copyright 2004

Reviewed by Pat Speece

This is why we like rocks. Everyone of the 72 specimens is a stunner.

The high-color photos are divided into *Stonescape* subdivisions of Time, Form, Space, Earth, Element, Law, Art, Spectrum, Mind, Body, Animal, and Beauty per the accompanying 70 commissioned literary pieces. Each side-by-side layout features a thoughtful writeup on the left and the gorgeous polished specimen on the right.

The plates include ocean and other jasper, petrified wood, pietersite, sodalite, mookaite, iron meteorite, tiger iron, various agates, opals, malachite, and others.

The section of *Rock Descriptions* by Si and Ann Frasier, and Robert Hutchinson follows the photographs. These descriptions follow the page order in the main section. Accompanied by a colored thumbnail photo, descriptions give the common name, magnification, technical terms (defined), and origin. Readable for the non-scientific admirer, the descriptions tell how the specimen was formed, where, and how the colors came to be.

Photographers will be interested in the final section—*Making the Photographs*, and *Making the Book*.

Atkinson shows the beauty in the rocks that we all know is there. The descriptions explain how that is so.

All this, and you can order large matted and signed fine-art prints, starting at \$400. The entire book is \$40. And our library has two copies:

one donated by Chris Cox (thank you, Chris), and the other purchased by our club.

Local Exhibit

The Tech Museum of Innovation

201 S. Market Street

San Jose, CA

Phone: 408 294-TECH

September 2004 thru February 2005

An Exhibit of 20 Giant photographs from *Within the*

Mineral Names by Bridgette Berman

via Beehive Buzzer 9/04, via Rock and Ice 5/03

Names of minerals normally end in *-ite* or *-lite* from the Greek word *Lithos*, which means stone. Other name endings originate from old German mining terms such as *-spat* and *-blende*, which identify minerals with good cleavage and lacking valuable metals.

In addition, minerals are named for specific properties: *Axinite*—Crystals shaped like an ax; *Astrophyllite*—From the greek words *Astron*, which means brilliance, and *pylon*, which means leaf; *Chromite*—for its chemical composition, chrome in this case; *Aragonite*—for its location, Aragon, Spain; *Phillipsite*—after an individual, the English mineralogist W. Phillips.

Today's naming of minerals follows the principles. The new mineral and its name have to be approved by an international commission.

SCVG&MS Calendar



December 7 Installation Dinner at the Three Flames Restaurant at 1547 Meridian Ave, San Jose, (408) 269-3133. Time 7:00 PM Remember to bring an unwrapped toy for the Toys for Tots.

December 9 Board meeting at Ruth Bailey's home, 2857 Addison Place, Santa Clara (408) 248-6195 at 7:30 PM.

December 9 Stringer's Meeting 7-9 PM

December 12 Fossileers field trip see article

January 13 Stringer's Meeting 7-9 PM

January 25 General Mtg at the Cabana Club 100 Belwood Gateway, Los Gatos 7:45 PM

January 27 Board Meeting at 7:30 PM Place to be determined

February 3 Faceter Meeting Place and time to be determined. Call Bill Norton for details. (408) 356-8245

February 10 Stringer's Meeting 7-9 PM

February 22 General Mtg at Cabana Club 100 Belwood Gateway, Los Gatos 7:45 PM

February 24 Board Meeting at 7:30 PM Place to be determined

March 10 Stringer's Meeting 7-9 PM

Advice for New Members on Collecting Minerals and Fossils

So, you've joined the mineral club and you want to start accumulating vast troves of treasures. Great! Collecting is for many, the main reason they joined a club. The chance to affiliate with people of like interest and learn some information is also foremost in the motivation to join an organization. Before you start building your specimen pyramid, cairn, or Matterhorn, think about where you will put all your specimens. Will they end up in boxes, in your garden, on bookcases—what will you do with them? More importantly, what will your family say when you bring home 90 pounds of mica or calcite?

Of course, you can keep accumulating stuff until you end up in divorce court or you fall through the floor into the apartment below yours from the sheer weight of your bounty. Better yet, you can build an indoor stone wall!

All kidding aside, collecting minerals, fossils, bottles, or any kind of collectible requires both space and organization. Organization includes labeling, sorting, inventorying, and displaying the best stuff.

Consider specializing—collecting only one family of minerals (Phosphates, oxides, halides, carbonates, etc.) or minerals from New York State, Europe, or a specific location. Possibly you might collect just fluorite, barite, or tourmaline crystals. If you are a fossil collector, you might want to special-

ized in trilobites, vertebrates, or insect amber.

Space is always a factor in collecting, especially if you live in an apartment. Restricted space can be worked with by selecting a specimen size that fits the parameters. Specimens can range from gigundo, massive, monumental, to cabinet size, palm size, thumbnails, to micro-mounts. Smaller specimens often have the best crystallization.

If you purchase items, consider buying on exceptional specimen at a shop or show rather than ten ho-hum pieces. The object is to enjoy your purchase, while maintaining a quality collection. Don't be the Imelda Marcos of rockhounding. A good quality specimen is more likely to maintain or increase in its value.

Obtain a nice display case to show off your finds and purchases. Make Earth's treasures a part of your living space, not consigned to the basement, attic, or garage. In crates and tattered boxes.

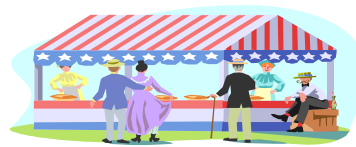
When you go into the field (on a field trip), keep only the best specimens; donate the others to schools, members who missed the trip, or people you might want to interest in joining the club.

Finally, don't listen to any of this garbage, as the writer doesn't take any of his own advice. I have over 6000 labeled specimens in my collection and a good deal more in bulk. That's how I know. Good luck, and enjoy collecting.

Via Shin Skinner News 10/04, via Capital Rockhounder, 7/04

CFMS Show Schedule

Changes to this calendar are printed in italics. For the latest version of the CFMS Show Schedule go to WWW.cfmsinc.org



Dec 4-5 Orangvale CA, American River Gem & Mineral Society, Orangvale Grange, 5807 Walnut Ave, Hours 10-5 Evelyn Tipton/ e.k.tipton@wordnet.att.net

Dec 4-5 2004, San Bernardino, CA Orange Belt Mineralogical Society 58th annual Rocks Galore in 2004 San Bernardino Woman's Club 503 W 31st Street; 31 St. & E Streets Hours: 10-5 both days Pat Wind (909) 381-0089 or (909) 792-0668

February 18-27 2005, Indio, CA San Geronio Mineral & Gem Soc. Date Festival - Gem & Mineral Bldg #1 Riverside County Fair & Date Festival 46-350 Arabia St. Hours: 10:00 am - 10:00 pm Bert Grisham (951) 849-1674

February 19-20 2005, Stockton, CA Stockton Lapidary & Mineral Club 54th Annual Earth's Treasures San Joaquin County Fairgrounds 1658 South Airport Way - Buildings 4 & 5 Hours: Sat 9-5 Sun 9-4 Laurie Haines (209) 838-0108 E-mail lhaines99@aol.com

March 4, 5 & 6 2005, Hayward, CA The Mineral & Gem Society of Castro Valley Centennial Hall, 22292 Foothill Blvd. Hours: Fri, & Sat. 10 - 6; Sun. 10 - 5 Ron Miller (510) 538-2397 Email: mgsev@yahoo.com

March 5-6 2005, Ventura, CA Ventura Gem & Mineral Society Seaside Park (Ventura Co. Fairgrounds) 10 W. Harbor Blvd. Hours: Sat. 10 - 5; Sun. 10 - 4 Jim Brace-Thompson (805) 659-3577 Email: jbraceth@adelphia.net

March 5-6 2005, Arcadia, CA Monrovia Rockhounds Inc. The Arborium of Los Angeles County 301 N. Baldwin Avenue Hours: 9 - 5 both days Jo Anna Ritchey (626) 359-1624

March 12-13 2005, Turlock, CA Mother Lode Mineral Society Stanislaus County Fairgrounds 900 N Broadway Hours: 10- 5 Bud McMillin (209) 527-8000 (Wk) or 524-3494 (H) E-mail: Bud.McMillin.b7yj@StateFarm.com

CFMS NEWS: Report by Bill Gissler, CFMS Director

At the CFMS Federations Directors' Meeting In Fresno on November 13, 2004, Colleen McGann, a member of the Peninsula Gem & Geology Society in Palo Alto, was elected First Vice President. During 2005 she will perform the duties of President Elect, serving on several committees. In 2006 she will assume all the duties of the President. Looks like Colleen will be one busy lady for the next two years. Congratulations and good luck, Colleen.

The California Mineral and Mining Museum may be moving from the Mariposa County Fairgrounds to a new site in downtown Mariposa. The site, located next to the Mariposa Chamber of Commerce, will offer greater exposure to tourists and travelers. An architect has prepared schematic plans and fund raising is underway.

Insurance coverage for Club field trips and activities is now in place for October 2004 through October 2005. However, premium costs have increased to \$5.00 per member. This means that SCVG&MS will be paying CFMS \$6.50 per member in January 2005 for dues and insurance. Thank goodness we had a successful Show in April to help cover these costs. Show case competition judging rules will be published in the January 2005 AFMS newsletter. When they are printed, SCVG&MS will have copies available for members.

The Public Lands Advisory Committee (PLAC) needs more members to review various government actions affecting land use. Contact Frank Monez for details and a description of what PLAC does, its composition and responsibilities.

Over the next several months SCVG&MS officers will be reviewing other matters and committee reports presented at the November 13 meeting. Plenty of opportunity to get involved and enjoy the benefits of our hobby.

Hints and Tips

Polish metal and stones with an electric shoe polisher! Remove the existing shoe polisher brushes, attach a spindle on each shaft end and then install polishing buffs. Don't forget to obtain the right and left hand threads spindles so that the buffs won't spin off. Most shoe polishers spin slowly, just right for polishing.

Via Opal Express 9/04, via dusty rocks 4/92, via the Ventura Gem and Mineral Society

To remove a cab that is stuck in its finding, heat the finding in boiling water. Then gently tap it with a pencil. This works because metal expands faster than stone, when exposed to heat.

Via The Roamin Rams 1/96

**Attention!! Anyone
interested in swapping
mineral specimens or
fossils unique
to our area with
a man from Pennsylvania.
Contact Mike Mowen at
mlmo@innernet.net**

PLAC Report as submitted by Frank Monez

The following "Rockhounding" has been taken from a BLM Internet article.

ROCKHOUNDING

California's geological forces have created one of the widest varieties of rocks and minerals found in any state. This rock and mineral wealth has long been recognized by rockhounds even before the gold rush days. Early rockhounds were prospectors looking for valuable minerals and gemstones for commercial purposes. Eventually, however, more people were drawn to rockhounding for recreational purposes, mainly for the beauty that rocks and minerals provide.

By the 1930s, interest in rockhounding increased significantly and it was during this period that rockhounding groups were formed and collecting areas in the desert were publicized. With increased popularity of rockhounding, some rockhounds regarded certain areas as their own and feared that other collectors would deplete their rocks and minerals. This led to substantial amounts of material being removed and an increase in mining claims. By the 1960s the government saw a need to regulate the collection of rocks and minerals on public lands. Visitors to the Mojave Desert often ask where they can rockhound. Perhaps the best source of information is rock, gem, and mineral groups found in communities throughout southern California. Libraries, bookstores, and "gem and mineral shows" are also very good sources of published information. Although any hill, mountain, or wash can provide some wonderful rock and mineral discoveries, the following listed areas are some of the well-known sites visited by rockhounds in which good samples can still be found.

Many rockhounding sites require hiking or driving to remote areas on sandy or rocky roads where there is a possibility of getting stuck. It is always a good idea to travel in a group and to bring plenty of drinking water with you when traveling in the desert. If you must travel alone, be sure to let someone know of your plans. Remember to stay on designated open roads. Cross country travel

is illegal, as is driving in designated Wilderness Areas.

Rules and Regulations:

Part 8365 of Title 43 CFR (Code of Federal Regulations) provide for the collecting of "reasonable quantities" of rocks, minerals, semiprecious gemstones, and invertebrate and plant fossils of non-scientific importance, for personal use. With respect to rockhound material, the Field Office considers a "reasonable quantity" to be not more than can be carried in a daypack.

Regulations do not allow collecting on "developed recreation sites and areas," or where otherwise prohibited or posted. Care should be exercised not to collect minerals on mining claims. Most claimants will allow rockhounding if the individual interested in rock collecting first asks permission. Remember, it is your responsibility to determine if an area is open to collection or if you are on private land.

More specific rules affecting rockhounding can be found on the Internet, at <http://www.ca.blm.gov/barstow/rock.html>

Maps:

Desert Access Guide Maps showing the distribution of public and private lands are available for sale at BLM offices. **Rockhounding**

Locations:

- 1. Opal Mountain Black Mountain** - 5 miles north of Fossil Bed Road via dirt road . Jasper . Nodules . Opal
- 2. Mule Canyon** - 3 miles north of Yermo . Agate . Borax . Celestite . Jasper . Olivine . Petrified Wood . Satin Spar . Silver . Travertine . Olivine
- 3. Alvord Mine** - 7 miles north of Manix via dirt road . Agate . Calcite . Chalcedony . Jasper . Pyrite
- 4. Pisgah Crater** - 1 mile south of Interstate-40 off of Historic Route 66 . Lava . Volcanic Bombs
- 5. Cady Mountains** - 6 miles north of Pisgah via dirt road . Agate . Chalcedony . Geodes . Jasper
- 6. Afton Canyon** - 1 miles southeast of Afton off ramp via dirt road . Agate . Calcite . Chalcedony . Jasper . Nodules
- 7. Broadwell Dry Lake** - 6 miles north of Ludlow via Crucero Road; west to hilly area . Banded Agate . Moss Agate . Geodes . Jasper . Onyx
- 8. Halloran Spring** - Turquoise Mountain North of Halloran Springs . Azurite . Turquoise

EASY as 1, 2, 3

by Chuck Boblenz

Maybe this is nostalgia, but our show was one of the premiere shows in the state each year and its stature was noted by the high number of showcases that were shown. This number has gotten smaller as time has gone onward.

A number of members have been very steadfast in putting in cases each year, but there are also a number who have not put a case in a number of years; and, in fact, some that have never shown their collections and handiwork.

Each member is interested in this hobby because we either collect and/or make things associated with the earth sciences. Lapidary, metal working, fossils, mineral collecting, bead stringing, carving, faceting, and the list goes on and on. Each of us are very proud of what we have accumulated and/or learned over this time. It is my hope that this pride will spill over and when shown will interest other members to try something new, or to inspire someone not associated with our group to wish to learn more and join us.

So, how does one do this? Well, let me share with you three EASY steps:

1. Decide which of your collections and/or handiwork you are the proudest of and would like others to see and enjoy. It does not need to be a large number, but something you can place into a space that is 2 feet high by 2 feet deep and 4 feet long. Most of us will find that we can easily fill this kind of space. This then makes the job easier as we start to set some items aside till we reach the best showing of our material.
2. Contact Lynn Toschi and/or Frank Mullaney to arrange getting one of the clubs show cases with lights. Our Society has a large number of cases that can be loaned out to members. Get one of these cases and bring it home and set it up in a convenient place and put your items in and arrange them to your hearts desire.

Last months BRECCIA had the

plans for liners. The case you get from these gentlemen may not be too well finished on the inside, so making a set of these liners will allow you to paint them and/or cover them in some material that will help show your collection. These can be made of cardboard or thin plywood, such as door skins, that can be obtained from a lumberyard.

Should you feel uncomfortable is doing any of this, please contact Lynn, Frank, or myself and we can offer assistance. Feel free to call, as any question deserves an answer.

3. Lastly, contact Lynn Toschi and have him place your name on his list of members that will put in a showcase to our show this coming April.

See: EASY As 1, 2, 3,

Now is the time to start thinking of these things; get things in hand so that after the holidays one can start serious effort in getting your prize collection ready to be seen.

Good luck and if I may be of any help, please contact me.

For more information on
building a show case,
you may go back to the
May and June Breccias
for articles to help.
The past Breccias are
now on our new website
www.scvgms.org
Check it out!!

Lapidary Social and Rock Sale

By Mark Wartenberg

Debbie and I recently hosted a lapidary social event at our home that included the sale of rock material that had been donated to the club over the last year or so. This event was planned with help from members Kathy and Gary McChristian, John Bahr and Suzi Papineau, and Lynn Toschi. The idea for this event came out of discussions with the McChristians that the club did not have many events where people actually got together to do lapidary. We frequently see results of the lapidary work from various members, but we rarely get together to cut and polish rocks. From these initial discussions, we decided to have a social event where club members could gather to work on their individual projects, or work together on a project, or just sit and talk about rocks. We decided to have a potluck lunch, and then extend the invitation to a larger group to come over and buy some rocks, while having the opportunity to learn how lapidary is done.

After having a planning day with our fellow club members, the event was scheduled for Saturday October 30th, just one day before Halloween. Each of us took a section of the club membership directory, and an attempt was made to contact every club member in the area. Club members were invited to come over early and have first chance at the rocks, which were all for sale at 50 cents per pound, and then to stay for potluck lunch. In addition to our club members, the invitation was extended to other local clubs, and to our extensive list of junior rockhound families, to come over in the afternoon and join in the fun. We had quite a good response from everyone, and the event went very well.

In preparation for this lapidary social event, I prepared our 36" rock saw for the very first cut. This involved

filling the bottom of the tank with paving bricks, and then adding just the right amount of saw oil. Although the saw is very old, it had never been run, so I thought I'd better give it a trial run before trying it out in front of an audience, and I'm glad that I did! For the first cut, I chose a large piece of Stone Canyon Jasper that was collected several years ago when the site was first reopened and I joined the Mullaney's (Frank, Marc, and Anne Marie) on a very excellent field trip. As it turned out, it was a good thing that I did a trial run, since it took several hours of fine tuning the saw speed to keep from tripping the switch and shutting off the saw. After a long struggle, the first slab finally dropped with a resounding thud, and I felt confident that we were ready for an audience. In addition to demonstrating rock sawing, Gary brought over his Genie setup for cutting cabs and I also had my twin 40-lb tumblers ready to start.

To make a long story short, the event was a resounding success, with many club members joining in, including a delightful visit from Margaret Norton! (Special thanks to Nancy Boring for providing transportation to Margaret). We had a great potluck lunch, after which we had as many as forty or fifty juniors running around our backyard, examining rocks and learning a lot about lapidary. It was really a great day, which included cutting several large septarian nodules brought over by Jim Nelson, and a few large slabs of Morgan Hill Poppy Jasper from Lynn Toschi, and we even managed to sell over 500 lbs of rock! For those who missed it, we are thinking about making this a regular event, so hopefully you can come next time. Thanks to all who participated.!

Collecting Limits and Permits

You can collect a reasonable amount of rocks and minerals from BLM Lands, But a permit or fee may be needed if you exceed certain amounts as described below. Note that the collecting limits for petrified wood are slightly different.

A Reasonable Daily Collecting Amount

No BLM permit or fee is required.

- Fits into the trunk of a car or
- is a partial pickup truck load and ,
- weighs less than 250 lbs.,
- and the material is for non commercial use. (For Petrified Wood, See Below)

More than a Reasonable Daily Collecting Amount

Requires a permit and fee from BLM.

- is a full pickup truck load or,
- involves more than one trip (or par-

tial load) and,

- weighs more than 250 lbs.
- or the material is for commercial

use,

- or explosives or power equipment is used. (For Petrified Wood see below)

Petrified Wood:

Collecting petrified wood is free up to 25 pounds per day, plus one piece, but no more than 250 pounds per year. Pooling of quotas among two or more people to obtain over 250 pounds is prohibited. A permit is needed for amounts over these limits.

Via Council Reporter 9/04, From official BLM Regulations regarding collecting (<http://www.blm.gov/nhp/efoia/or/fy2000/im/m2000-023.htm>)

Safety First: Winter Driving Safety

By Bill Klose, Safety Chair, EFMLS News October 2004

Prior to venturing out in winter weather, first consider if the trip is worth the risk, or if the trip can be delayed until conditions are better.

Winterizing the family vehicle is a must. Make sure that your brakes, windshield wipers and washers, heater and defroster system and exhaust are all in good working condition. Check all your fluids for the proper types and levels, such as winter grade oil, proper antifreeze levels and temperature rating, and winter type windshield washer fluid. It may pay to have a tune-up prior to going into winter, to avoid starting problems on damp or colder days. Make sure that your tires are of the proper type (Snow or all weather) and properly inflated and the tread condition good in accordance with the manufacture's instructions and State Inspection requirements. Check the battery for good capacity with the connectors clean and tight. Have the brakes adjusted or replaced if required. Make sure all the lights are in working order, including the emergency flashers.

A number of items should be carried in your vehicle in case of emergency. These include the standard lug wrench and lug lock adapter, spare tire or "donut", flash light with spare batteries, matches in a watertight container, a survival candle, emergency flares, and reflective triangle, first aid kit with pocket knife, jumper cables or emergency power pack, adequate blankets or sleeping bags, set of tire chains, traction mats, sack of sand for traction and ice melt, small shovel and snow shovel, medicine, energy food bars or dried food, such as trail mix, and bottled water. Portable radios and cell phones with spare batteries for both are highly recommended. Extra clothes, shoes, gloves, hats, and rain gear will be required if it turns colder, you get wet, or you are not dressed for outdoors, but only for a warm car. A small tool kit that includes screw drivers, wrenches, pliers, a tire pressure gauge, bungee cords, duct tape, bailing wire, and a rag can be used for minor roadside repairs. Carry a pencil and paper to leave a note, and a brightly colored rag to use as a flag.

Before leaving the house dress warmly in layers of light loose fitting clothing. Run the defroster and heater when warming up the vehicle, which should be driven as soon as possible to avoid damage to engine parts. Allow extra time for the trip and drive an appropriate speed for road conditions. Keep the gas tank above half full at all times and full at the start of a long trip. Keep an empty clean or new gas container with your emergency supplies. Make sure the windows and lights are clear of snow and clean. Use seat belts and car seats that are properly installed in accordance with the manufacture's instructions.

Do not lean forward in vehicles that have air bag systems and try to give the air bag cover at least 10 inches of clearance to provide sufficient clearance for deployment. Drive with your lights on and mirrors properly adjusted. Use proper turning signals well ahead of time when turning. Keep a safe distance from the vehicle ahead to allow for reaction time and proper braking. If driving in the snow, the

best steering is in the tracks of the vehicle ahead. If you go into a skid, take your foot off the brake and gas and let the engine slow you down, and steer gently into the direction of the skid until you regain control. If you have standard brakes, pump the brake pedal gently until stopped. If you have anti-lock apply firm and constant pressure on the brake pedal—you will feel the brake pedal pulsate, which is common. Never jam on the brakes. Remember that 4-wheel drive and Sport utility vehicles may have higher ground clearance which helps them get going better than other vehicles in heavy snow, but are not immune to winter conditions and have the same basic handling characteristics while braking. Some of them have a high center of gravity and are more prone to rolling over in sharp turns.

When traveling with trucks, make sure the driver can see you, by driving slightly to the left side where you can see his mirror. Remember if you can't see his mirror, he can't see you. If you pass a truck, give him a wide berth, and turn up the speed of your windshield wipers if the road is wet or snow covered. If the road is too slippery, you may consider not passing. Do not follow a truck too closely and stay back a safe distance when at a traffic light or stop sign—he may roll back slightly on a hill before he moves forward (Also true of any manual transmission vehicle).

If visibility gets too bad, pull as far off the road as possible and turn on your emergency flashers. If you have a flat tire, need repairs, or have damage to your vehicle, never try to fix or survey the damage to the vehicle on the highway. Get as far off the road to as safe a place as possible, even if it means damage to a tire and rim. If the vehicle is disabled, put out flares or reflective triangles and if you can't safely effect repairs, call for help and stay in the vehicle for protection from the elements and passing vehicles.

Road Rage should be considered during any season of the year. The best way to avoid making other drivers angry and aggressive is to be courteous, content, and considerate. When you merge always use turn signals and allow plenty of room. If you are cut off, slow down and give the other driver plenty of room. If you are in the left lane and someone comes up behind, move over to the right and let them pass. Use your horn seldom if ever. Do not approach other vehicle with your high beams on or tailgate. Do not make any gestures, even shaking your head, that might make another driver angry. Do not make eye contact with an angry driver and give them plenty of room. It takes two angry drivers to start a fight. Get help if an angry driver is following you and trying to start a fight. Use a cell phone to call police or go to a police station or place where there are people around. Do not get out of your vehicle or go to your home.

Make your trip to a winter rock show or a visit with friends or relatives during winter season enjoyable and safe.

Via the Virginia Pen 10/04

**SANTA CLARA VALLEY GEM & MINERAL SOCIETY
MINUTES OF THE GENERAL MEETING
November 23, 2004**

President Marc Mullaney called the meeting to order at the Belwood Cabana Club in Los Gatos at 7:49 pm. Members and guests were welcomed and invited to stay for refreshments and the opportunity get to know everyone. The minutes of the last general meeting stand approved as printed in the Breccia.

STUDY GROUPS: New meeting dates were announced. See Breccia for dates.

CORRESPONDENCE: A letter from the AFMS Scholarship was read stating that Ruth Bailey donated \$25.00 to the scholarship in the name of Mary Andersen.

NEW MEMBERS: New members Adam Yamashita along with Larry & Winifred Moore were welcomed.

ELECTIONS: President: John Eichhorn
Vice President: Pat Speece

The society has a new website, www.scvgms.org.

The membership was asked that anyone who could receive the Breccia by e-mail please do so we need to cut down the cost.

Ruth Bailey announced that Mark & Debbie Wartenberg were CFMS scholarship honorees.

ELECTIONS: Secretary: Randy Harris
Treasurer: Chuck Boblenz
Editor: June Harris

SUNSHINE: See Breccia for details

FIELD TRIPS: Look in the Breccia for details.

FEDERATION REPORT: See the Breccia for details.

SHOW CHAIRMAN 2005: Show meeting in January Frank will Call the committee with the date.

HOSPITALITY: Guests were introduced and asked to join in the Silent auction.

INSTALLATION BANQUET: Installation Banquet will be December 7th at the Three Flames Restaurant.

ELECTIONS: Federation Director: RK Owen
Alternate Federation Director: Frank Monez
Historian: Anna Windsor
Parliamentarian: Ruth Bailey

Auditing Committee: The following auditing committee was elected.
Roselies Vogel (Chair)
John Eichhorn
Mary Lou Ferrara

PLAC: See the Breccia for details.

ELECTIONS: Board of Directors: Marc Mullaney, John Bahr, Don Cox, Lynn Toschi, Jane Yamashita

SILENT AUCTION: The silent auction was held through the meeting.

MEETING ADJOURNED at 9:10 pm and refreshments were enjoyed by all.

Respectfully Submitted: Frank Mullaney

**SANTA CLARA VALLEY GEM & MINERAL SOCIETY
MINUTES OF THE BOARD MEETING
November 25, 2003**

President Marc Mullaney called the meeting to order at the Belwood Cabana Club in Los Gatos at 9:10 pm. A motion was made to postpone reading the minutes of the October Board of Directors meeting. This motion was moved seconded and passed.

There was no treasurer's report.

A motion was made to accept Jesus C. Ruiz & Dee Stolpe as members of the Society. This motion was moved seconded and passed.

The next board meeting will be at the home of Ruth Bailey home hosted by John Eichhorn on December 9.

A motion was made to adjourn the meeting at 9:20 pm. This motion was moved seconded and passed.

Respectfully Submitted
Frank Mullaney

Santa Clara Valley Gem and Mineral Society 2004

ELECTED OFFICERS

President: Marc Mullaney
(408) 691-1584

Email: mmullaney@ensr.com

Vice President: John Eichhorn
(408) 749-0523

email: johneichhorn@earthlink.net

Secretary: Frank Mullaney
(408) 266-1791

email: rockyfiv@aol.com

Treasurer: Ruth Bailey
(408) 248-6195

email: Rba51825@aol.com

Editor: June Harris

(831) 438-5150

email: Juneconeyharris@yahoo.com

Federation Director: Bill Gissler
(408) 241-0477

email: wgissler@juno.com

Alternate Fed. Director: Frank Monez
(408) 578-7067

email: Frankm2@sbcglobal.net

Directors:

John Bahr- (408) 267-1620

Chuck Boblenz (408) 734-2473

Don Cox (408) 294-0872

Montella Lopez (408) 248-6195

RK Owen (408) 377-5373

Historian: Mary Lu Ferrara
(408) 246-6251

email: mlferrara@aol.com

Parliamentarian: Bill Norton
(408) 356-8254

COMMITTEE HEADS

Field Trip Coordinator: OPEN

Founder's Day Picnic: June Harris and Suzi Papinaeu

Hospitality: Frank Scelzi and Jennifer Raff

Installation Dinner: Kathy McChristian

Juniors: Gary and Kathy McChristian,

Mark and Debbie Wartenberg

Librarians: June Warne and Nancy Boring

Member Display: George and Jane Yamashita

PLAC (Public Lands Activities Committee)

Frank Monez

Program: Bill Gissler

Refreshments: Knut and Kris Owen

Sargeant-at-arms: Hershal Boring

Show 2004: John Eichhorn

Show 2005: Frank Mullaney

Silent Auction: John and Silvia Palmieri

Sunshine: Suzi Papineau

Trailer Custodian: Herb Vogel

Trophies: Frank Mullaney

Breccia Crew: Editor June Harris (juneconeyharris@yahoo.com)
Editor Address and Phone#: 107 Dell Way, Scotts Valley CA 95066, (831) 438-5150
Proofreader: Randy Harris (Randysparky234@netscape.net)
Printer: Marc Mullaney (mmullaney@ensr.com)
Assembly and Mailing Staff: Ruth Bailey and Bill Norton
Exchange Editor: June Harris, 107 Dell Way, Scotts Valley, CA 95066

Permission to copy is freely granted to American Federation of Mineralogical Societies (AFMS) affiliated clubs when proper credit is given.

Santa Clara Valley Gem and Mineral Society

Please Send Exchange Bulletins to;
June Harris
107 Dell Way
Scotts Valley, CA 95066

PRSRT STD
US Post Paid
Campbell, CA
Permit 1060



Please Deliver Promptly

AFMS Code of Ethics

I will respect both private and public property and will do no collecting on privately owned land without the owner's permission.

I will keep informed on all laws, regulation of rules governing collecting on public lands and will observe them.

I will to the best of my ability, ascertain the boundary lines of property on which I plan to collect.

I will use no firearms or blasting material in collecting areas.

I will cause no willful damage to property of any kind—fences, signs, buildings.

I will leave all gates as found

I will build fires in designated or safe places only and will be certain they are completely extinguished before leaving the area.

I will discard no burning material— matches, cigarettes, etc.

I will fill all excavation holes which may be dangerous to livestock

I will not contaminate wells, creeks, or other water supply.

I will cause no willful damage to collecting material and will take home only what I can reasonably use

I will practice conservation and undertake to utilize fully and will the materials I Have collected and will recycle my surplus for the pleasure and benefit of others.

I will support the rockhound project H.E.L.P. (Help Eliminate Litter Please) and will leave all collecting areas devoid of litter, regardless of how found.

I will cooperate with field trip leaders and those in designated authority in all collecting areas.

I will report to my club or Federation officers, Bureau of Land Management or other authorities, any deposit of petrified wood or other materials on public lands which should be protected for the enjoyment of future generations for public education and scientific purposes.

I will appreciate and protect our heritage of natural resources.

I will observe the "Golden Rule", will use " Good Outdoor Manners" and will at all times conduct myself in a manner which will add to the stature and Public "image" of rockhounds everywhere.